

SALT LAKE CITY, UTAH

AL-365 (FAA)

25051

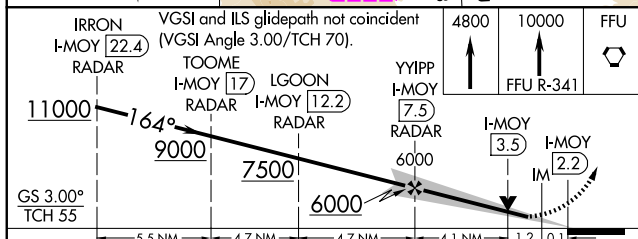
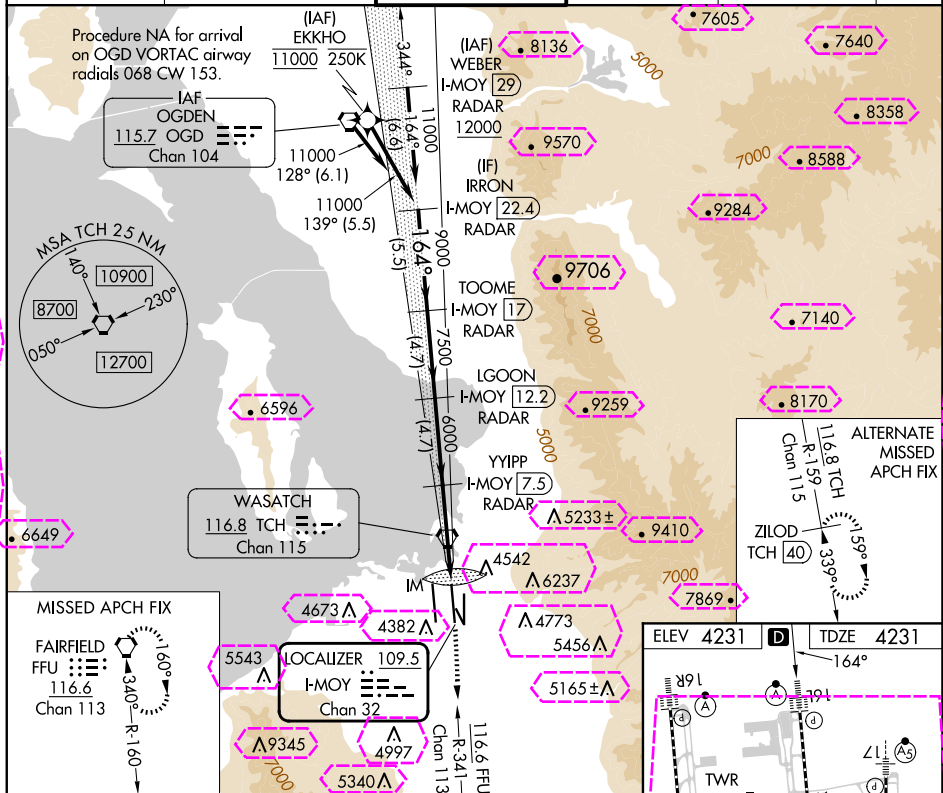
|   |                        |   |
|---|------------------------|---|
| LOC/DME I-MOY<br><b>109.5</b><br>Chan <b>32</b> | APP CRS<br><b>164°</b> | Rwy Idg<br>TDZE<br>Apt Elev<br><b>12002</b><br><b>4231</b><br><b>4231</b> |
|---|------------------------|---|

# ILS or LOC RWY 16L

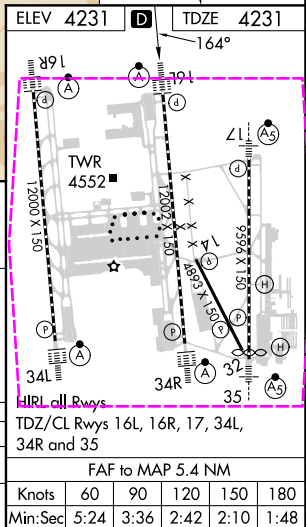
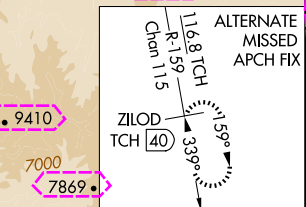
SALT LAKE CITY INTL (SLC)

|  |            |  |
|--|------------|--|
| RNP APCH - GPS. From EKKHO.<br>DME or RADAR required.  | ALSf-2<br> | MISSED APPROACH: Climb to 4800 then climb to 10000 on FFU VORTAC R-341 to FFU VORTAC and hold. |
| Simultaneous approach authorized. For inop ALS, increase S-LOC 16L Cat C/D visibility to 1 1/2 SM. |            |  |

|                                 |  |   |                                 |                                  |       |
|---------------------------------|--|---|---------------------------------|----------------------------------|-------|
| D-ATIS<br><b>124.75 125.625</b> | SALT LAKE CITY APP CON<br><b>125.7 284.6</b> | SALT LAKE CITY TOWER<br><b>119.05 257.8</b> | GND CON<br><b>123.775 348.6</b> | CLNC DEL<br><b>127.3 379.975</b> | CPDLC |
|---------------------------------|--|---|---------------------------------|----------------------------------|-------|



| CATEGORY  | A   | B | C | D |
|-----------|---|---|---|---|
| S-ILS 16L | 4431/18 200 (200-1/2)                     |   |   |   |
| S-LOC 16L | 4720/24 489 (500-1/2) 4720/50 489 (500-1) |   |   |   |



SALT LAKE CITY, UTAH  
Amdt 4 20FEB25

40°47'N-111°59'W

# SALT LAKE CITY INTL (SLC)


## ILS or LOC RWY 16L

SW-4, 10 JUL 2025 to 07 AUG 2025

SW-4, 10 JUL 2025 to 07 AUG 2025

|   |                        |  |
|---|------------------------|--|
| LOC/DME I-MOY<br><b>109.5</b><br>Chan <b>32</b> | APP CRS<br><b>164°</b> | Rwy Ldg <b>12002</b><br>TDZE <b>4231</b><br>Apt Elev <b>4231</b> |
|---|------------------------|--|

ILS or LOC RWY 16L  
SALT LAKE CITY INTL (SLC)

|   |   |  |
|---|---|--|
| RNP APCH - GPS. From EKKHO.   | ALSF-2<br> | MISSED APPROACH: Climb to 4800 then climb to 10000 on FFU VORTAC R-341 to FFU VORTAC and hold. |
| DME or RADAR required.<br><b>T</b> Simultaneous approach authorized. For inop ALS, increase S-LOC 16L Cat C/D visibility to 1 3/8 SM. |   |  |

|                |                        |                      |               |               |       |
|----------------|------------------------|----------------------|---------------|---------------|-------|
| D-ATIS         | SALT LAKE CITY APP CON | SALT LAKE CITY TOWER | GND CON       | CLNC DEL      | CPDLC |
| 124.75 125.625 | 125.7 284.6            | 119.05 257.8         | 123.775 348.6 | 127.3 379.975 |       |

