



25051

LOC/DME F-SLC 109.5 Chan 32	APP CRS 344°	Rwy Idg 12002 TDZE 4225 Apt Elev 4231
---	------------------------	--

ILS RWY 34R (SA CAT I)
SALT LAKE CITY INTL (SLC)

RNP APCH - GPS. From QWENN or JAZZZ.				ALSF-2 	MISSED APPROACH: Climb to 9000 direct TCH VORTAC and on TCH VORTAC R-331 to OGD VORTAC and hold.	
DME or RADAR required.						
 Simultaneous approach authorized. Requires specific OPSPEC, MSPEC, or LOA approval.						
D-ATIS 124.75 125.625		SALT LAKE CITY APP CON 125.7 284.6	SALT LAKE CITY TOWER 119.05 257.8	GND CON 123.775 348.6	CLNC DEL 127.3 379.975	CPDL C

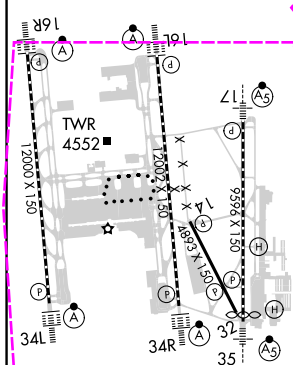
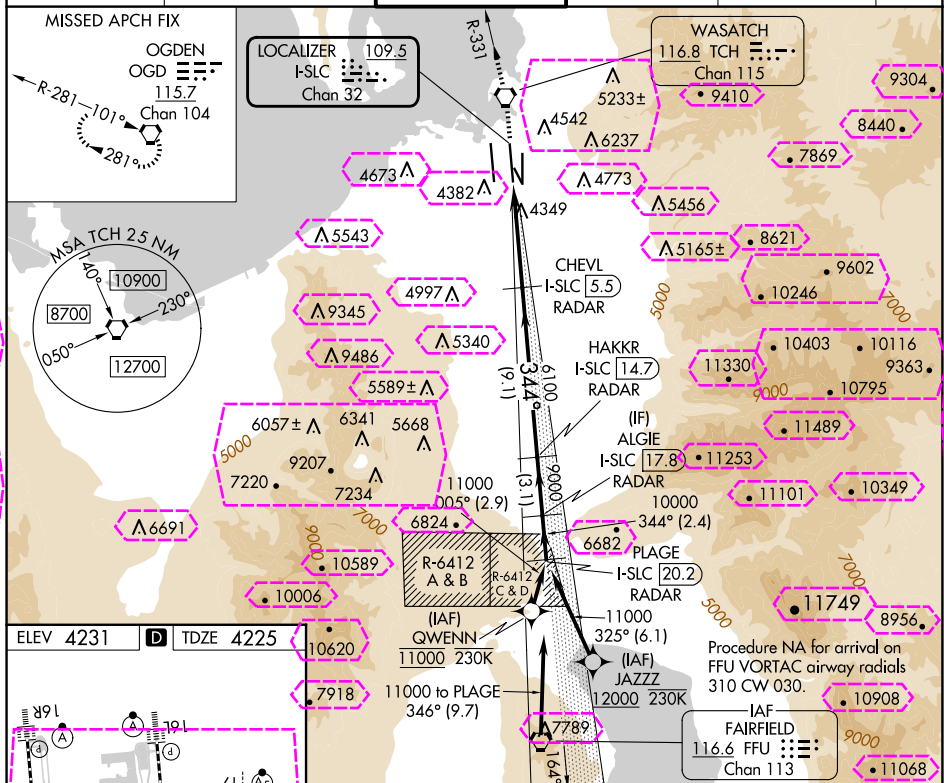


Diagram illustrating the layout of a VOR/DME station. The diagram shows a VOR/DME station (VGS) and an ILS glidepath (VGS Angle 3.00/TCH 73). The station is located at the bottom left, with a VOR/DME frequency of 113.1 MHz and a DME frequency of 113.1 MHz. The glidepath is shown as a solid line with a 3.00 degree angle. The station is surrounded by various navigation aids and radar systems:

- VGS and ILS glidepath not coincident (VGS Angle 3.00/TCH 73).**
- Navigation Aids:**
 - CHEVL:** I-SLC 5.5 RADAR
 - HAKKR:** I-SLC 14.7 RADAR
 - ALGIE:** I-SLC 17.8 RADAR
 - PLAGE:** I-SLC 20.2 RADAR
- Distances:**
 - 10.45 NM (from station to first radar)
 - 5.7 NM (between first and second radar)
 - 9.1 NM (between second and third radar)
 - 3.1 NM (between third and fourth radar)
 - 2.4 NM (between fourth radar and station)
- Altitudes:**
 - 6100 ft (at first radar)
 - 9000 ft (at second radar)
 - 10000 ft (at third radar)
 - 11000 ft (at fourth radar)
- Other Information:**
 - GS 3.00°** (Glide Slope)
 - TCH 55** (Threshold Crossing Height)

CATEGORY	A	B	C	D
S-ILS 34R	RA 149/14 150 DA 4375			

SA CATEGORY I ILS - SPECIAL AIRCREW
& AIRCRAFT CERTIFICATION REQUIRED



SALT LAKE CITY, UTAH

AL-365 (FAA)

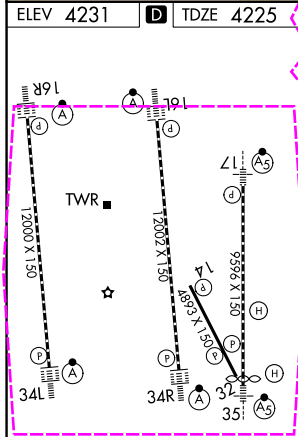
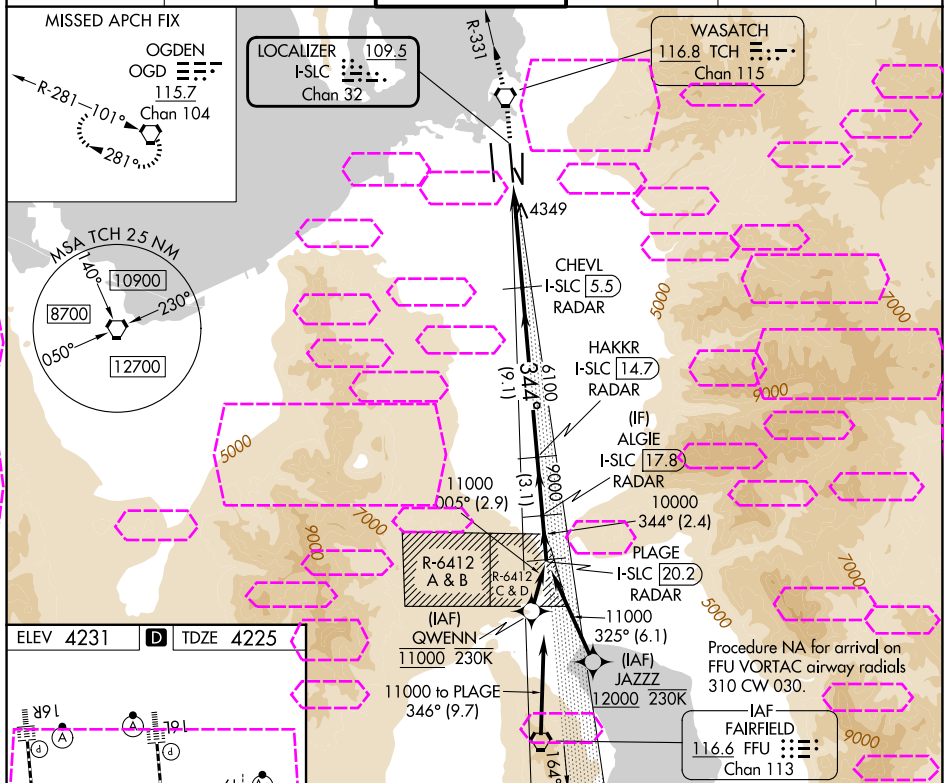
25219

LOC/DME I-SLC 109.5 Chan 32	APP CRS 344°	Rwy Ldg 12002 TDZE 4225 Apt Elev 4231
---	------------------------	--

ILS RWY 34R (SA CAT I)
SALT LAKE CITY INTL (SLC)

RNP APCH - GPS. From QWENN or JAZZZ.	ALSF-2 	MISSED APPROACH: Climb to 9000 direct TCH VORTAC and on TCH VORTAC R-331 to OGD VORTAC and hold.
DME or RADAR required.		
 Simultaneous approach authorized. Requires specific OPSPEC, MSPEC, or LOA approval.		

D-ATIS 124.75 125.625	SALT LAKE CITY APP CON 125.7 284.6	SALT LAKE CITY TOWER 119.05 257.8	GND CON 123.775 348.6	CLNC DEL 127.3 379.975	CPDLC
--------------------------	---------------------------------------	--------------------------------------	--------------------------	---------------------------	-------



9000 ↑	TCH R-331	OGD	VGS1 and ILS glidepath not coincident (VGS1 Angle 3.00/TCH 73).				PLAGE I-SLC 20.2
			CHEVL I-SLC 5.5	HAKKR I-SLC 14.7	ALGIE I-SLC 17.8		RADAR
			6100	9000	10000	11000	
			6100				
			1045'	5.7 NM	9.1 NM	3.1 NM	2.4 NM
CATEGORY	A		B		C	D	

HIRL all Rwys
TDZ/CL Rwys 16L, 16R, 17, 35, 34L,
and 34R

SA CATEGORY I ILS - SPECIAL AIRCREW
& AIRCRAFT CERTIFICATION REQUIRED

SALT LAKE CITY, UTAH
Amdt 5 20FEB25

40°47'N-111°59'W

SALT LAKE CITY INTL (SLC)
ILS RWY 34R (SA CAT I)

SW-4, 07 AUG 2025 to 04 SEP 2025

SW-4, 07 AUG 2025 to 04 SEP 2025