

SALT LAKE CITY, UTAH

AL-365 (FAA)

25051

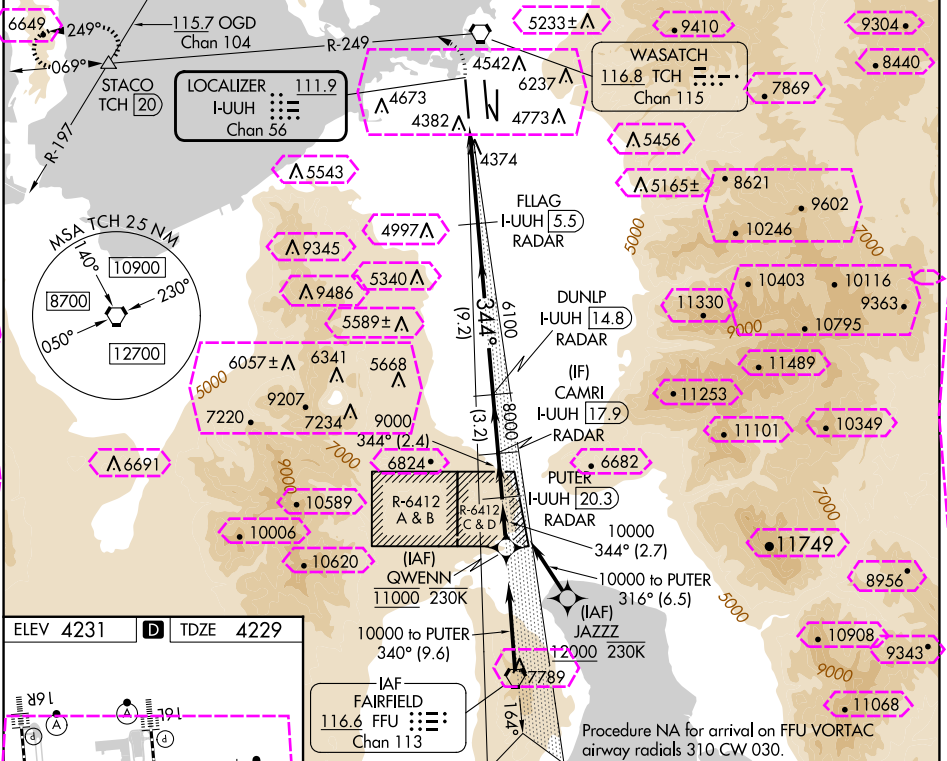
LOC/DME I-UUH 111.9 Chan 56	APP CRS 344°	Rwy Idg TDZE Apt Elev 12000 4229 4231
---	------------------------	---

ILS RWY 34L (SA CAT I)

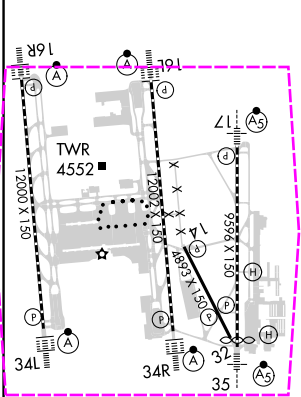
SALT LAKE CITY INTL (SLC)

RNP APCH - GPS. From QWENN or JAZZZ.	ALSF-2 	MISSED APPROACH: Climb to 4800 then climbing left turn to 8100 on TCH VORTAC R-249 to STACO INT/TCH 20 DME and hold.
DME or RADAR required.		
Simultaneous approach authorized. Requires specific OPSPEC, MSPEC, or LOA approval.		

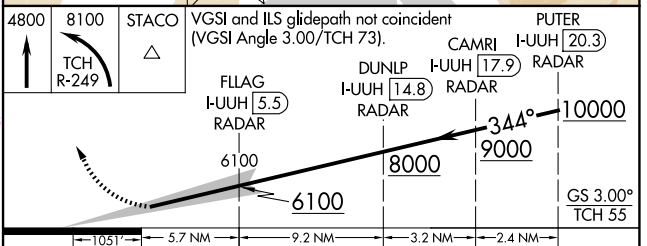
D-ATIS 124.75 125.625	SALT LAKE CITY APP CON 125.7 284.6	SALT LAKE CITY TOWER 132.65 336.4	GND CON 123.775 348.6	CLNC DEL 127.3 379.975	CPDLC
---------------------------------	--	---	---------------------------------	----------------------------------	-------



ELEV 4231	D	TDZE 4229
-----------	---	-----------



HIRL all Rwys
TDZ/CL Rwys 16L, 16R, 17, 35, 34L, and 34R



CATEGORY	A	B	C	D
S-ILS 34L	RA 157/14 150 DA 4379			
SA CATEGORY I ILS - SPECIAL AIRCREW & AIRCRAFT CERTIFICATION REQUIRED				

SALT LAKE CITY, UTAH
Amdt 4 20FEB25

40°47'N-111°59'W

SALT LAKE CITY INTL (SLC)
ILS RWY 34L (SA CAT I)

SW-4, 10 JUL 2025 to 07 AUG 2025

SW-4, 10 JUL 2025 to 07 AUG 2025

SALT LAKE CITY, UTAH

AL-365 (FAA)

25219

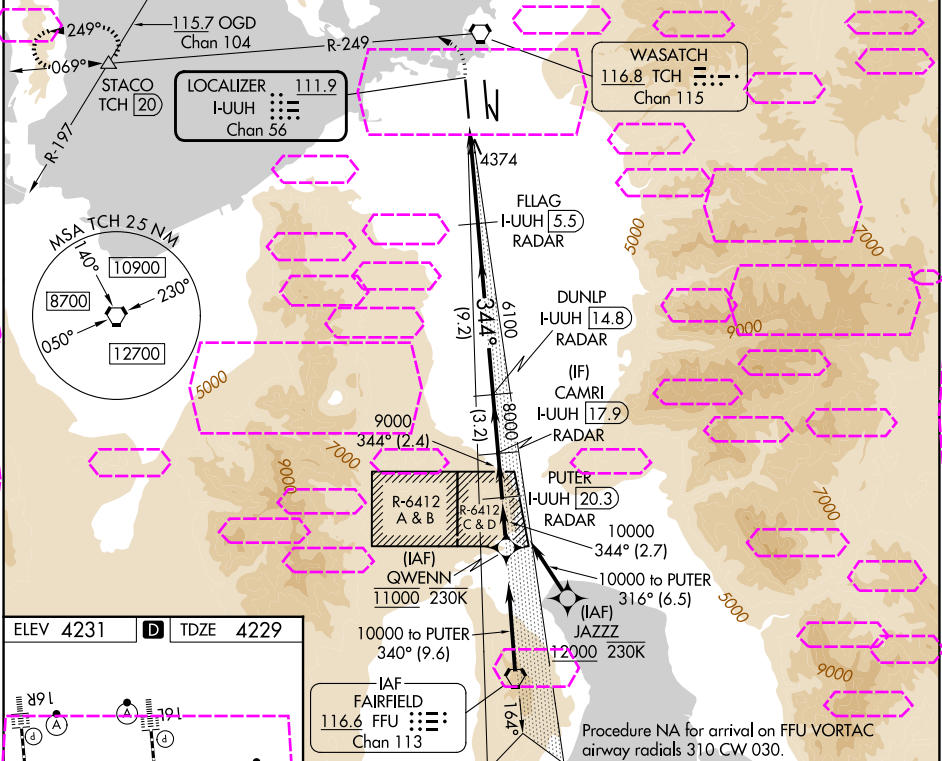
LOC/DME I-UUH 111.9 Chan 56	APP CRS 344°	Rwy Ldg TDZE Apt Elev 12000 4229 4231
---	------------------------	---

ILS RWY 34L (SA CAT I)

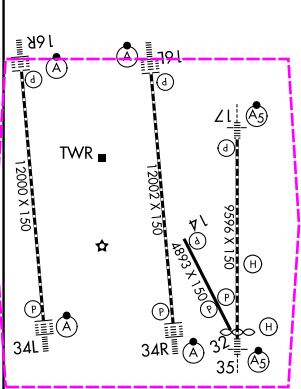
SALT LAKE CITY INTL (SLC)

RNP APCH - GPS. From QWENN or JAZZZ.	ALSF-2 	MISSED APPROACH: Climb to 4800 then climbing left turn to 8100 on TCH VORTAC R-249 to STACO INT/TCH 20 DME and hold.
DME or RADAR required.		
Simultaneous approach authorized. Requires specific OPSPEC, MSPEC, or LOA approval.		

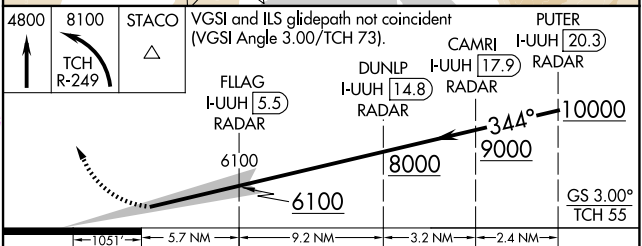
D-ATIS 124.75 125.625	SALT LAKE CITY APP CON 125.7 284.6	SALT LAKE CITY TOWER 132.65 336.4	GND CON 123.775 348.6	CLNC DEL 127.3 379.975	CPDLC
---------------------------------	--	---	---------------------------------	----------------------------------	-------



ELEV 4231	D	TDZE 4229
-----------	---	-----------



HIRL all Rwy
TDZ/CL Rwy 16L, 16R, 17, 35, 34L,
and 34R



CATEGORY	A	B	C	D
S-ILS 34L	RA 157/14 150 DA 4379			
SA CATEGORY I ILS - SPECIAL AIRCREW & AIRCRAFT CERTIFICATION REQUIRED				

SALT LAKE CITY, UTAH
Amdt 4 20FEB25

40°47'N-111°59'W

SALT LAKE CITY INTL (SLC)
ILS RWY 34L (SA CAT I)

SW-4, 07 AUG 2025 to 04 SEP 2025

SW-4, 07 AUG 2025 to 04 SEP 2025