

SALT LAKE CITY, UTAH

AL-365 (FAA)

25051

LOC/DME I-UUH 111.9 Chan 56	APP CRS 344°	Rwy Idg TDZE Apt Elev 12000 4229 4231
---	------------------------	---

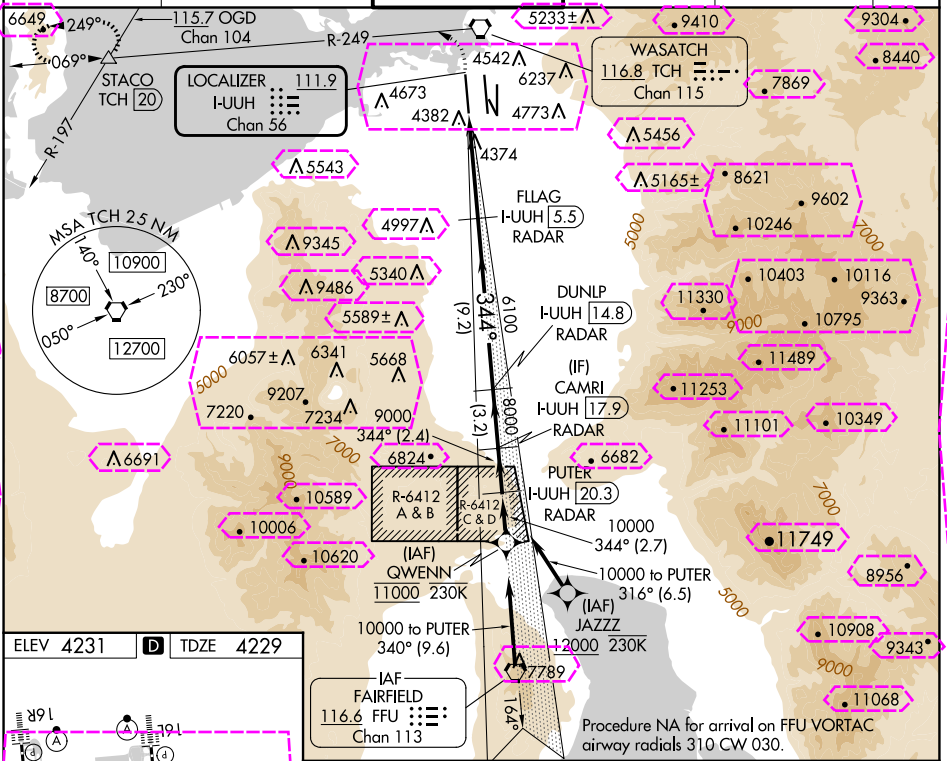
ILS RWY 34L (CAT II & III)

SALT LAKE CITY INTL (SLC)

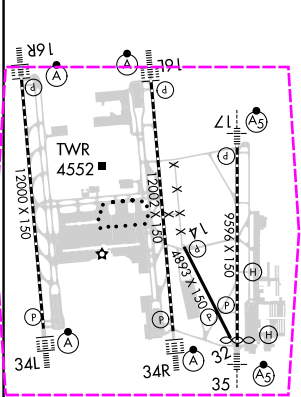
RNP APCH - GPS. From QWENN or JAZZZ.
DME or RADAR required.
Simultaneous approach authorized. CAT II: RVR 1000 authorized with specific OPSPEC, MSPEC, or LOA approval and use of autoland or HUD to touchdown.

ALSF-2
MISSED APPROACH: Climb to 4800 then climbing left turn to 8100 on TCH VORTAC R-249 to STACO INT/TCH 20 DME and hold.

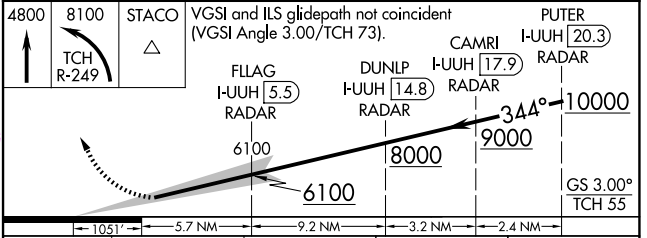
D-ATIS 124.75 125.625	SALT LAKE CITY APP CON 125.7 284.6	SALT LAKE CITY TOWER 132.65 336.4	GND CON 123.775 348.6	CLNC DEL 127.3 379.975	CPDLC
---------------------------------	--	---	---------------------------------	----------------------------------	-------



ELEV 4231	D	TDZE 4229
-----------	---	-----------



HIRL all Rwys
TDZ/CL Rwys 16L, 16R, 17, 35, 34L, and 34R



CATEGORY	A	B	C	D
S-ILS 34L	CAT II RA 103/12 100 DA 4329			
S-ILS 34L	CAT III RVR 03			

CATEGORY II & III ILS - SPECIAL AIRCREW & AIRCRAFT CERTIFICATION REQUIRED

SALT LAKE CITY, UTAH

Amdt 4 20FEB25

40°47'N-111°59'W

SALT LAKE CITY INTL (SLC)

ILS RWY 34L (CAT II & III)

SW-4, 10 JUL 2025 to 07 AUG 2025

SW-4, 10 JUL 2025 to 07 AUG 2025

SALT LAKE CITY INTL (SLC)
ILS RWY 34L (CAT II & III)