
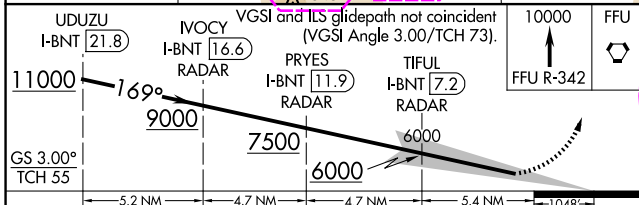
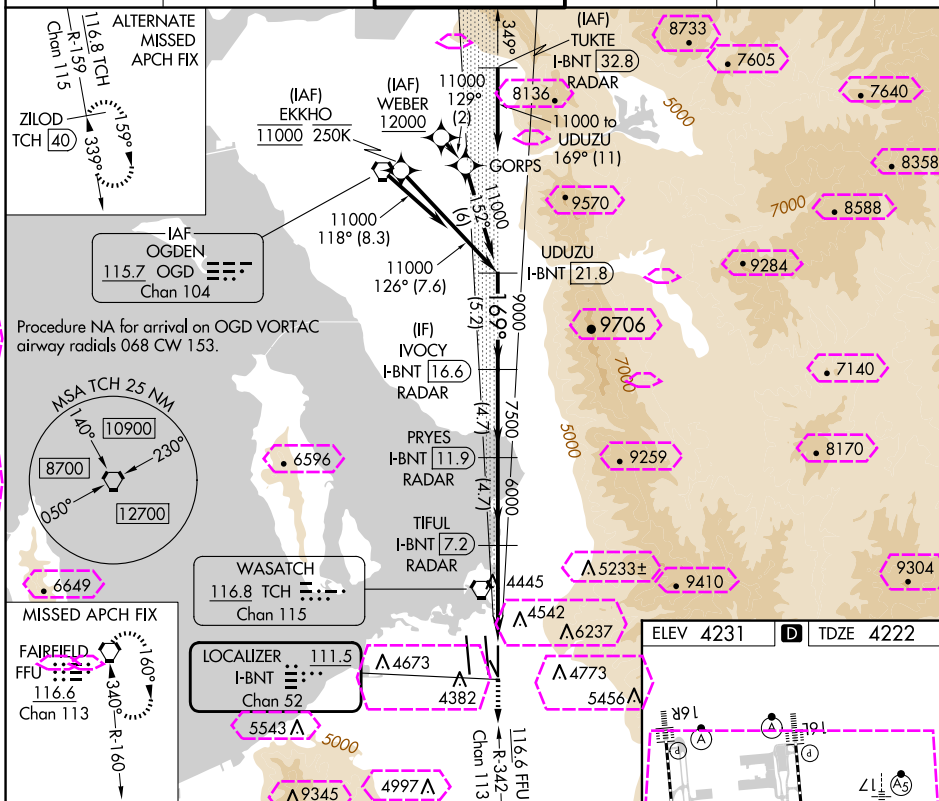


| | | |
|---|------------------------|---|
| LOC/DME I-BNT 111.5 Chan 52 | APP CRS 169° | Rwy Idg 9596 TDZE 4222 Apt Elev 4231 |
|---|------------------------|---|

ILS RWY 17 (SA CAT I & II)
SALT LAKE CITY INTL (SLC)

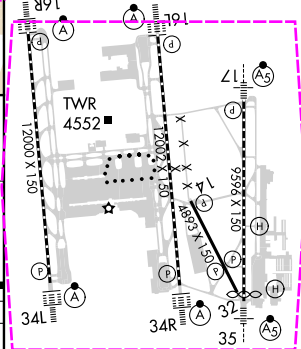
| | | |
|--|--|--|
| From WEBER, EKKHO: RNAV 1-GPS required. | MALSR  | MISSED APPROACH: Climb to 10000 on FFU R-342 to FFU VORTAC and hold. |
| DME or RADAR required. | | |
| T Simultaneous approach authorized. SA CAT I: Requires specific OPSPEC, MSPEC, or LOA approval and use of HUD to DH. SA CAT II: Reduced lighting: Requires specific OPSPEC, MSPEC, or LOA approval and use of autoland or HUD to touchdown. | | |

| | | | | | |
|--------------------------|---------------------------------------|-------------------------------------|------------------------|---------------------------|-------|
| D-ATIS 124.75 125.625 | SALT LAKE CITY APP CON 125.7 284.6 | SALT LAKE CITY TOWER 118.3 257.8 | GND CON 121.9 348.6 | CLNC DEL 127.3 379.975 | CPDLC |
|--------------------------|---------------------------------------|-------------------------------------|------------------------|---------------------------|-------|



| CATEGORY | A | B | C | D |
|----------|-----------|-----------|-----|---------|
| S-ILS 17 | SA CAT I | RA 150/14 | 150 | DA 4372 |
| S-ILS 17 | SA CAT II | RA 100/12 | 100 | DA 4322 |

**SA CATEGORY I & II ILS - SPECIAL AIRCREW
& AIRCRAFT CERTIFICATION REQUIRED**



HIRL all Rwy's
TDZ/CL Rwy's 16L, 16R, 17, 34L,
34R and 35

SW-4, 10 JUL 2025 to 07 AUG 2025

SW-4, 10 JUL 2025 to 07 AUG 2025

SALT LAKE CITY, UTAH

AL-365 (FAA)

25219

| | | |
|---|------------------------|---|
| LOC/DME I-BNT 111.5 Chan 52 | APP CRS 169° | Rwy Ldg TDZE 4222 Apt Elev 4231 |
|---|------------------------|---|

ILS RWY 17 (SA CAT I & II)

SALT LAKE CITY INTL (SLC)

From WEBER, EKKHO: RNAV 1-GPS required.

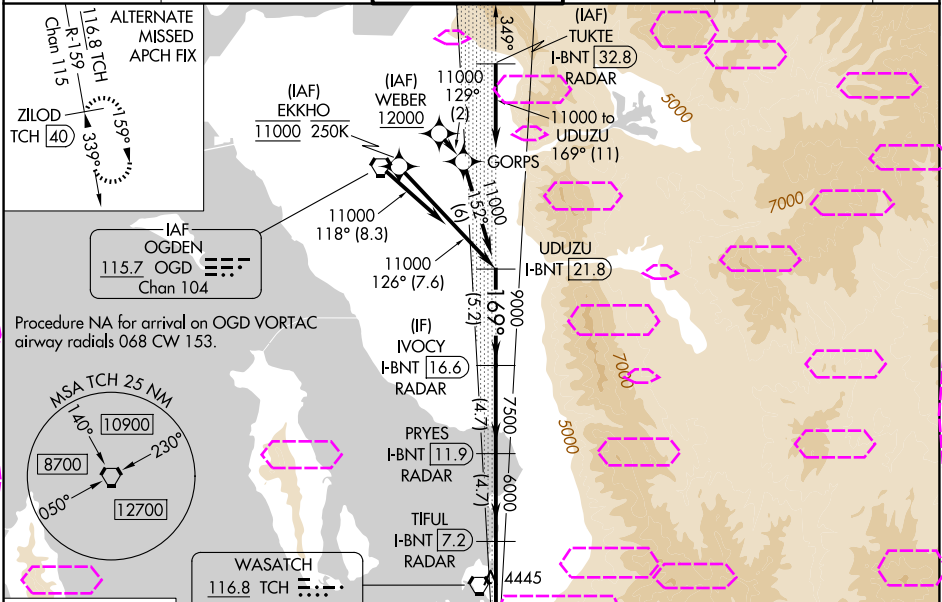
DME or RADAR required.

Simultaneous approach authorized. SA CAT I: Requires specific OPSPEC, MSPEC, or LOA approval and use of HUD to DH. SA CAT II: Reduced lighting: Requires specific OPSPEC, MSPEC, or LOA approval and use of autoland or HUD to touchdown.

MALSRR

MISSED APPROACH: Climb to 10000 on FFU R-342 to FFU VORTAC and hold.

| | | | | | |
|---------------------------------|--|--|-------------------------------|----------------------------------|-------|
| D-ATIS 124.75 125.625 | SALT LAKE CITY APP CON 125.7 284.6 | SALT LAKE CITY TOWER 118.3 257.8 | GND CON 121.9 348.6 | CLNC DEL 127.3 379.975 | CPDLC |
|---------------------------------|--|--|-------------------------------|----------------------------------|-------|



SW-4, 07 AUG 2025 to 04 SEP 2025

SW-4, 07 AUG 2025 to 04 SEP 2025

ELEV 4231 TDZE 4222

FAIRFIELD FFU 116.6 Chan 113

LOCALIZER 111.5 I-BNT Chan 52

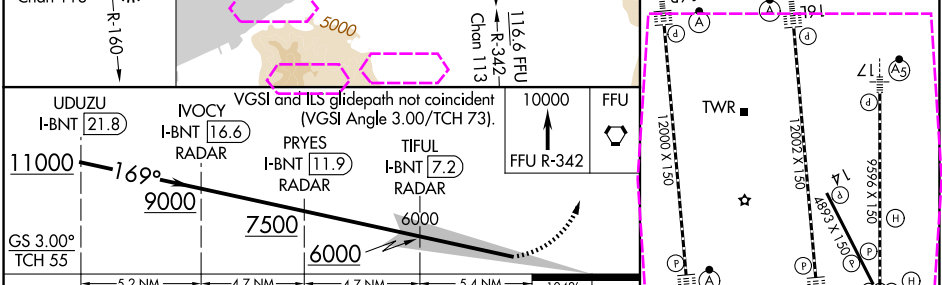
UDUZU I-BNT 21.8

IVOCY I-BNT 16.6

PRYES I-BNT 11.9

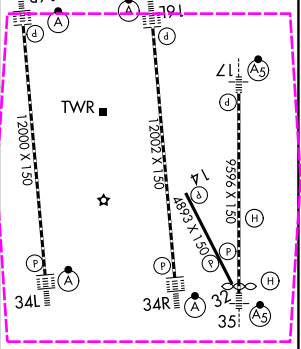
TIFUL I-BNT 7.2

FFU 10000 FFU R-342



| | | | | |
|----------|-----------|-----------|-----|---------|
| CATEGORY | A | B | C | D |
| S-ILS 17 | SA CAT I | RA 150/14 | 150 | DA 4372 |
| S-ILS 17 | SA CAT II | RA 100/12 | 100 | DA 4322 |

SA CATEGORY I & II ILS - SPECIAL AIRCREW & AIRCRAFT CERTIFICATION REQUIRED



HIRL all Rwys
TDZ/CL Rwys 16L, 16R, 17, 34L, 34R and 35

SALT LAKE CITY, UTAH
Amdt 15 20FEB25

40°47'N-111°59'W

SALT LAKE CITY INTL (SLC)
ILS RWY 17 (SA CAT I & II)