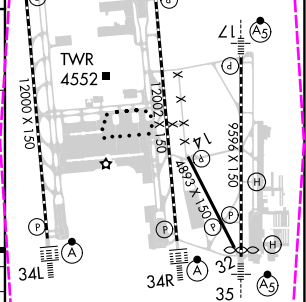
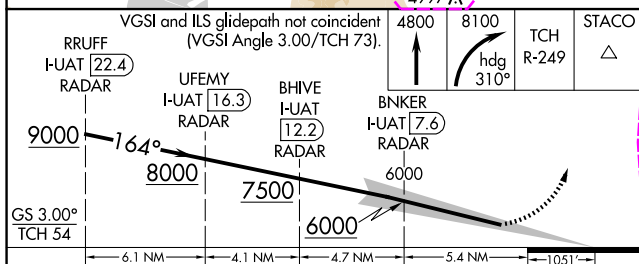
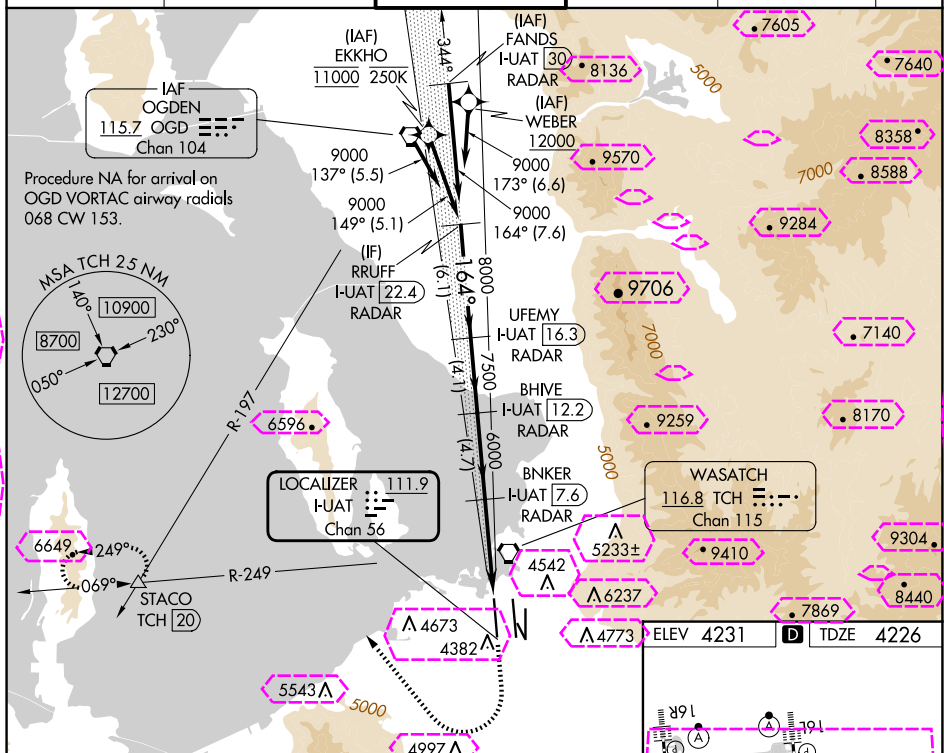


ILS RWY 16R (SA CAT I)
SALT LAKE CITY INTL (SLC)

D-ATIS	SALT LAKE CITY APP CON	SALT LAKE CITY TOWER	GND CON	CLNC DEL	CPDLC
124.75 125.625	125.7 284.6	132.65 336.4	123.775 348.6	127.3 379.975	



SA CATEGORY I ILS - SPECIAL AIRCREW
& AIRCRAFT CERTIFICATION REQUIRED

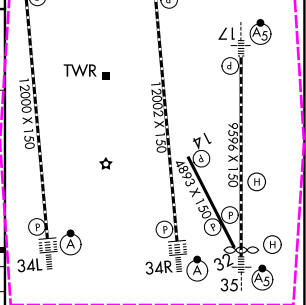
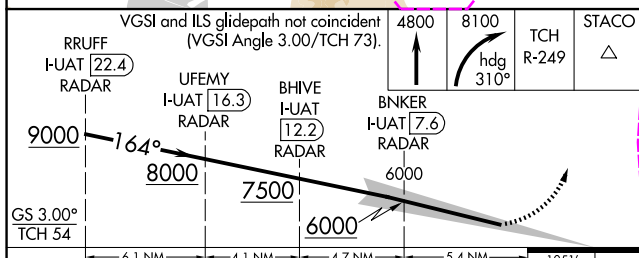
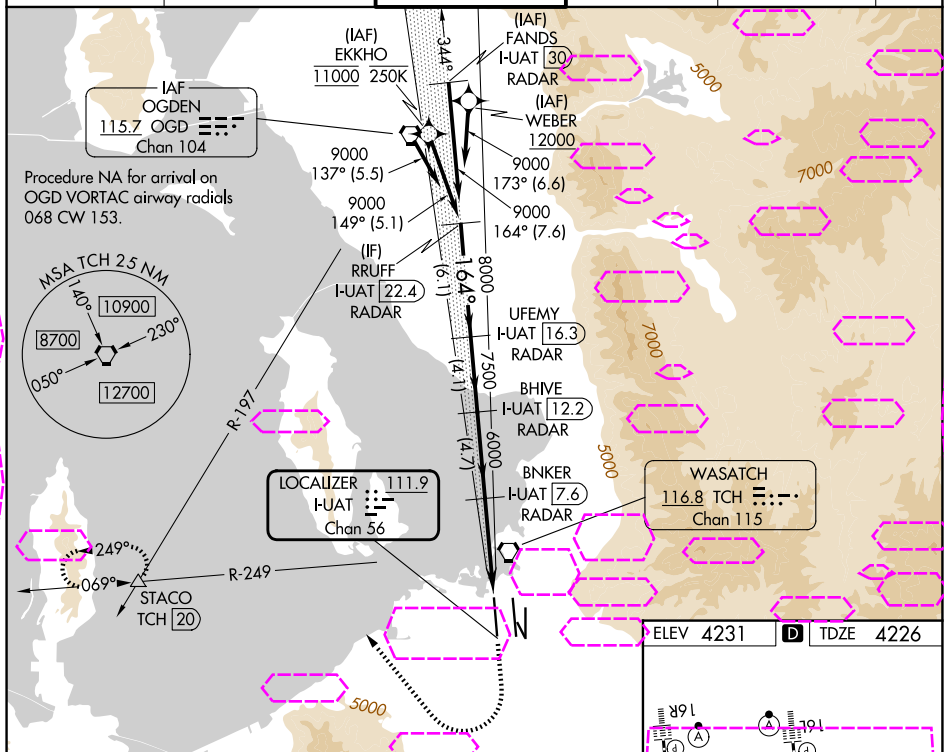
HIRL all Rwy's
TDZ/CL Rwy's 16L, 16R, 17, 34L,
34R, and 35

SW-4, 10 JUL 2025 to 07 AUG 2025

ILS RWY 16R (SA CAT I)
SALT LAKE CITY INTL (SLC)

MISSED APPROACH: Climb to 4800 then climbing right turn to 8100 on heading 310° and on TCH VORTAC R-249 to STACO INT/TCH 20 DME and hold.

D-ATIS	SALT LAKE CITY APP CON	SALT LAKE CITY TOWER	GND CON	CLNC DEL	CPDLC
124.75 125.625	125.7 284.6	132.65 336.4	123.775 348.6	127.3 379.975	



CATEGORY	A	B	C	D
S-ILS 16R	RA 154/14 150 DA 4376			

HIRL all Rwy's
TDZ/CL Rwy's 16L, 16R, 17, 34L,
34R, and 35

SW-4, 07 AUG 2025 to 04 SEP 2025

SW-4, 07 AUG 2025 to 04 SEP 2025