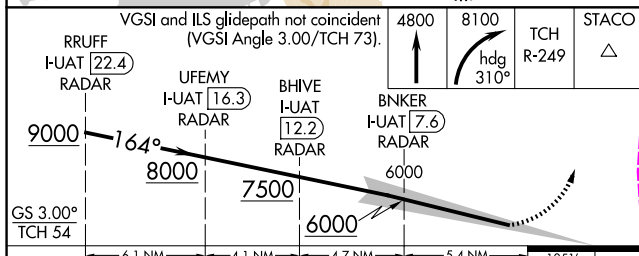
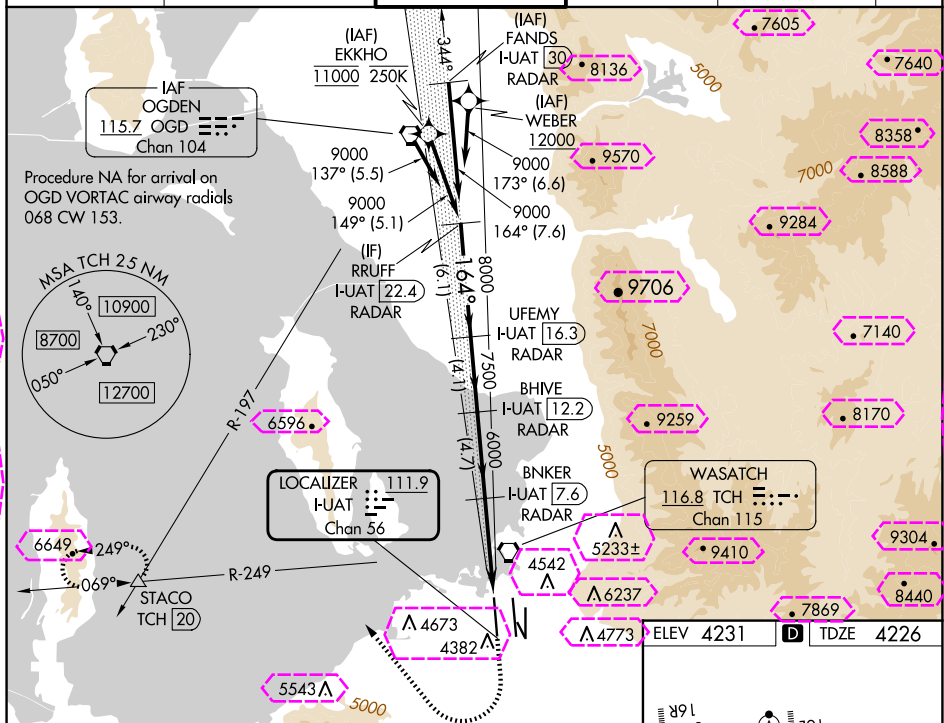


ILS RWY 16R (CAT II & III)  
SALT LAKE CITY INTL (SLC)

**MISSED APPROACH:** Climb to 4800 then climbing right turn to 8100 on heading 310° and on TCH VORTAC R-249 to STACO INT/TCH 20 DME and hold.

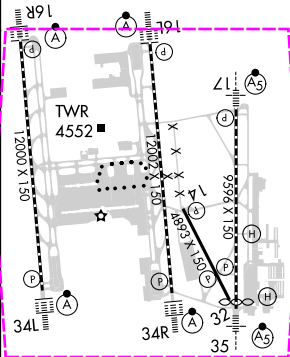
**T** Simultaneous approach authorized. CAT II: RVR 1000 authorized with specific OPSPEC, MSPEC, or LOA approval and use of autoland or HUD to touchdown.

D-ATIS	SALT LAKE CITY APP CON	SALT LAKE CITY TOWER	GND CON	CLNC DEL	CPDLC
124.75 125.625	125.7 284.6	132.65 336.4	123.775 348.6	127.3 379.975	



CATEGORY	A	B	C	D
S-ILS 16R	CAT II RA 104/12 100 DA 4326			
S-ILS 16R	CAT III RVR 03			

CATEGORY II & III ILS - SPECIAL AIRCREW  
& AIRCRAFT CERTIFICATION REQUIRED



HIRL all Rwy's  
TDZ/CL Rwy's 16L, 16R, 17, 34L,  
34R, and 35

SALT LAKE CITY, UTAH

AL-365 (FAA)

25219

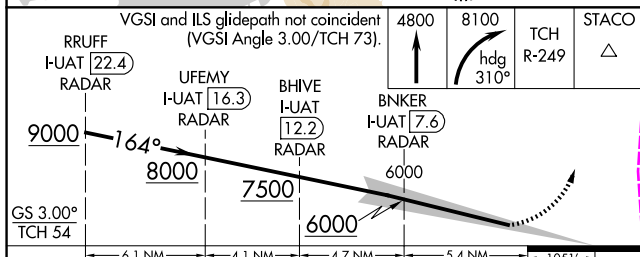
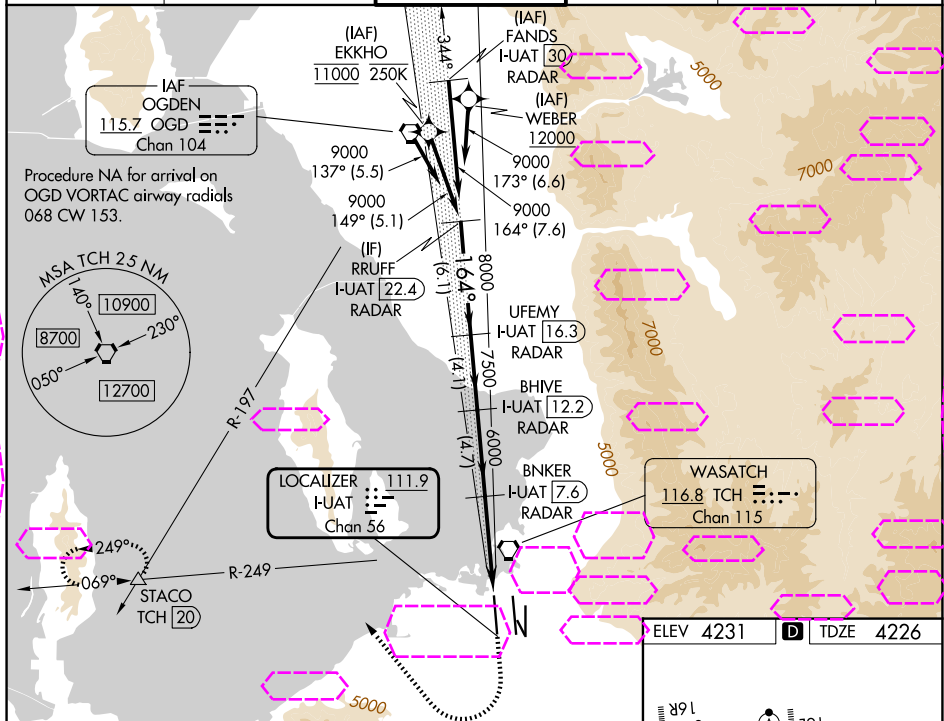
LOC/DME I-UAT <b>111.9</b> Chan <b>56</b>	APP CRS <b>164°</b>	Rwy Ldg TDZE Apt Elev	<b>12000</b> <b>4226</b> <b>4231</b>
---	------------------------	-----------------------------	--

# ILS RWY 16R (CAT II & III)

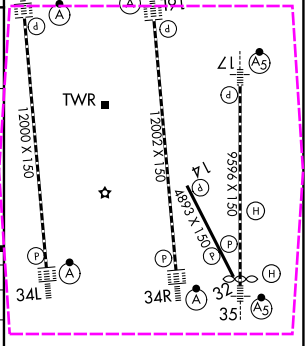
SALT LAKE CITY INTL (SLC)

RNP APCH - GPS. From EKKHO or WEBER. DME or RADAR required.	ALSF-2 	MISSED APPROACH: Climb to 4800 then climbing right turn to 8100 on heading 310° and on TCH VORTAC R-249 to STACO INT/TCH 20 DME and hold.
Simultaneous approach authorized. CAT II: RVR 1000 authorized with specific OPSPEC, MSPEC, or LOA approval and use of autoland or HUD to touchdown.		

D-ATIS <b>124.75 125.625</b>	SALT LAKE CITY APP CON <b>125.7 284.6</b>	SALT LAKE CITY TOWER <b>132.65 336.4</b>	GND CON <b>123.775 348.6</b>	CLNC DEL <b>127.3 379.975</b>	CPDLC
---------------------------------	--	---	---------------------------------	----------------------------------	-------



CATEGORY	A	B	C	D
S-ILS 16R	CAT II RA 104/12 100 DA 4326			
S-ILS 16R	CAT III RVR 03			



**CATEGORY II & III ILS - SPECIAL AIRCREW & AIRCRAFT CERTIFICATION REQUIRED**

SALT LAKE CITY, UTAH

Amtd 4 20FEB25

40°47'N-111°59'W

SALT LAKE CITY INTL (SLC)

ILS RWY 16R (CAT II & III)

SW-4, 07 AUG 2025 to 04 SEP 2025

SW-4, 07 AUG 2025 to 04 SEP 2025