

SALT LAKE CITY, UTAH

AL-365 (FAA)

25051

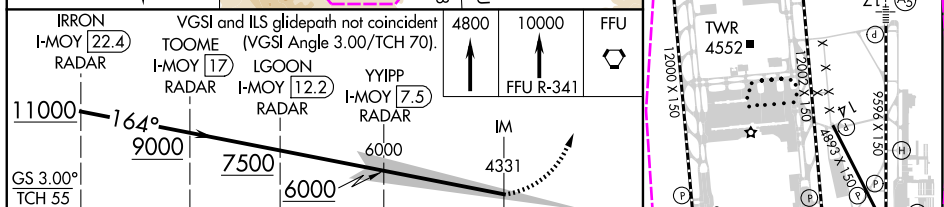
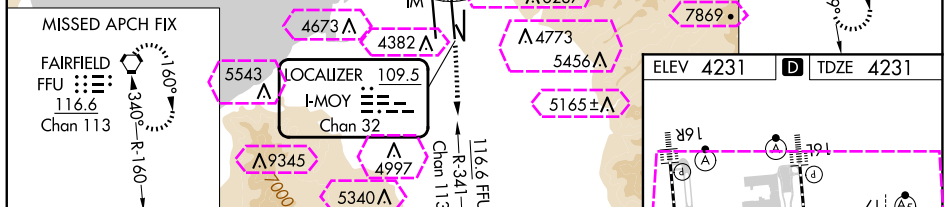
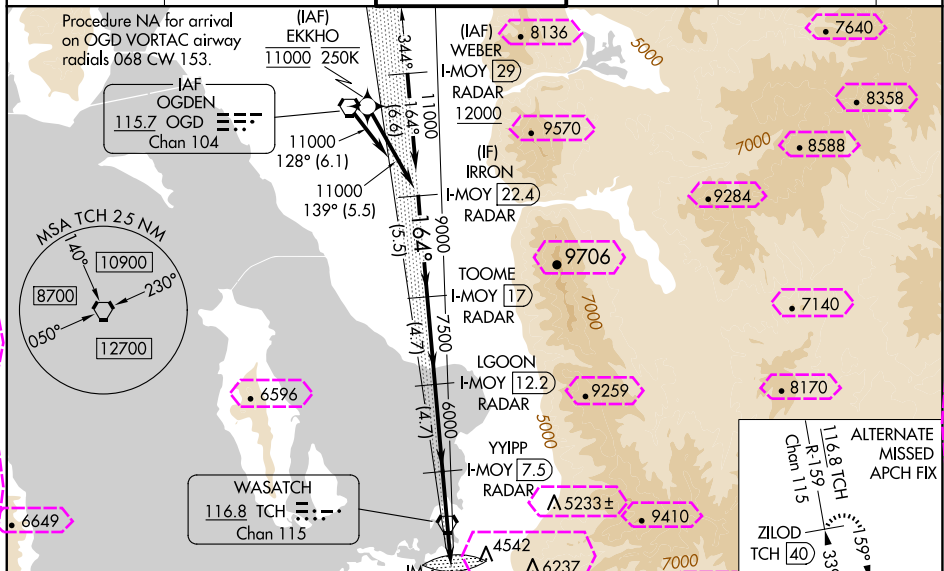
LOC/DME I-MOY 109.5 Chan 32	APP CRS 164°	Rwy Idg TDZE Apt Elev 12002 4231 4231
---	------------------------	---

ILS RWY 16L (CAT II & III)

SALT LAKE CITY INTL (SLC)

RNP APCH - GPS. From EKKHO.	ALSIF-2	MISSED APPROACH: Climb to 4800 then climb to 10000 on FFU VORTAC R-341 to FFU VORTAC and hold.
DME or RADAR required.		
Simultaneous approach authorized. CAT II: RVR 1000 authorized with specific OPSPEC, MSPEC, or LOA approval and use of autoland or HUD to touchdown.		

D-ATIS 124.75 125.625	SALT LAKE CITY APP CON 125.7 284.6	SALT LAKE CITY TOWER 119.05 257.8	GND CON 123.775 348.6	CLNC DEL 127.3 379.975	CPDLC
---------------------------------	--	---	---------------------------------	----------------------------------	-------



CATEGORY	A	B	C	D
S-ILS 16L	CAT II RA 109/12 100 DA 4331			
S-ILS 16L	CAT III RVR 03			
CATEGORY II & III ILS - SPECIAL AIRCREW & AIRCRAFT CERTIFICATION REQUIRED				

SALT LAKE CITY, UTAH
Amdt 4 20FEB25

40°47'N-111°59'W


SALT LAKE CITY INTL (SLC)
ILS RWY 16L (CAT II & III)

SW-4, 10 JUL 2025 to 07 AUG 2025

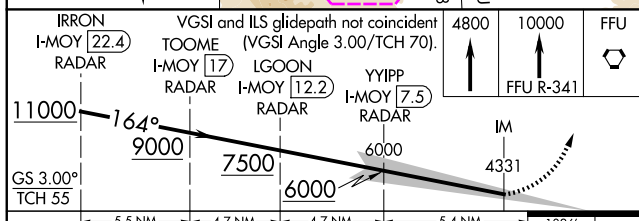
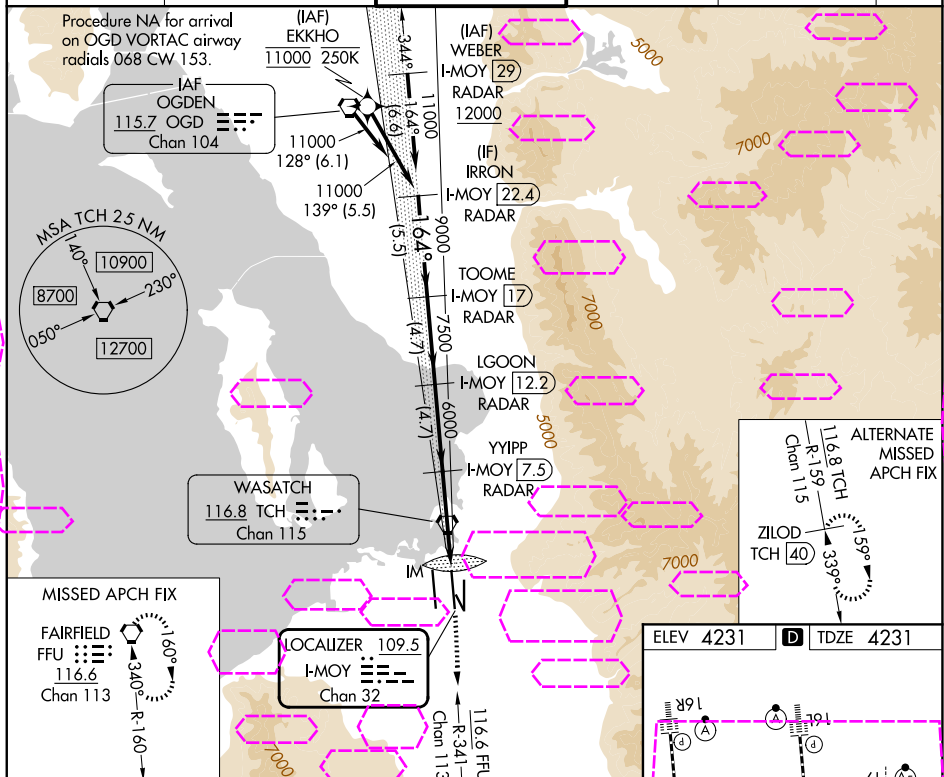
SW-4, 10 JUL 2025 to 07 AUG 2025

LOC/DME I-MOY 109.5 Chan 32	APP CRS 164°	Rwy Ldg 12002 TDZE 4231 Apt Elev 4231
---	------------------------	--

ILS RWY 16L (CAT II & III)
SALT LAKE CITY INTL (SLC)

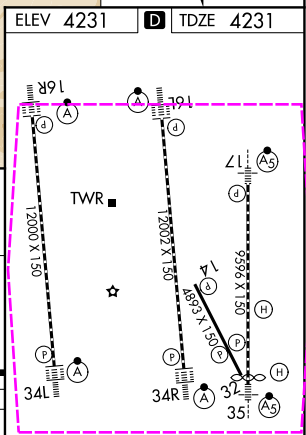
RNP APCH - GPS. From EKKHO.	ALSF-2 	MISSED APPROACH: Climb to 4800 then climb to 10000 on FFU VORTAC R-341 to FFU VORTAC and hold.
DME or RADAR required. ▼ Simultaneous approach authorized. CAT II: RVR 1000 authorized with specific OPSPEC, MSPEC, or LOA approval and use of autoland or HUD to touchdown.		

D-ATIS 124.75 125.625	SALT LAKE CITY APP CON 125.7 284.6	SALT LAKE CITY TOWER 119.05 257.8	GND CON 123.775 348.6	CLNC DEL 127.3 379.975	CPDLC
--------------------------	---------------------------------------	--------------------------------------	--------------------------	---------------------------	-------



CATEGORY	A	B	C	D
S-ILS 16L	CAT II	RA 109/12	100	DA 4331
S-ILS 16L	CAT III	RVR 03		

CATEGORY II & III ILS - SPECIAL AIRCREW
& AIRCRAFT CERTIFICATION REQUIRED



HIRL all Rwy's
TDZ/CL Rwy's 16L, 16R, 17, 34L,
34R and 35