

ST LOUIS, MISSOURI

AL-360 (FAA)

25107

WAAS CH 73000 W30A	APP CRS 303°	Rwy Idg TDZE Apl Elev	9013 605 617
--	------------------------	-----------------------------	---

RNAV (GPS) Y RWY 30R

ST LOUIS LAMBERT INTL (STL)

RNP APCH - GPS.

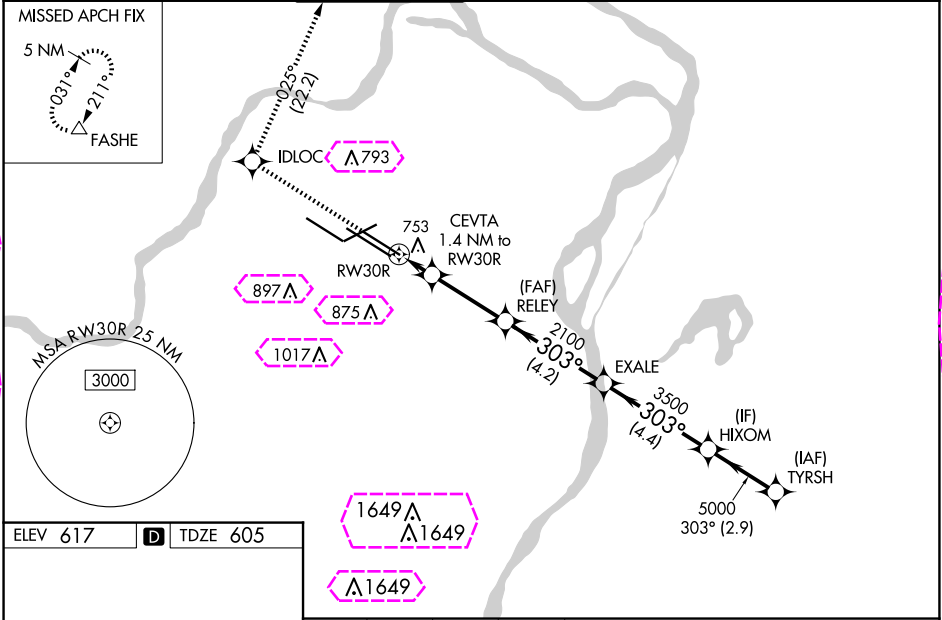
RADAR required for procedure entry.

▼ For uncompensated Baro-VNAV systems, LNAV/VNAV NA below -15°C or above 54°C. LNAV procedure NA during simultaneous operations. Use of FD or AP required during simultaneous operations. Simultaneous approach authorized with Rwy 29. For inop ALS, increase LPV Cat E visibility to RVR 4000, LNAV/VNAV all Cats visibility to RVR 4500, LNAV Cat C/D/E visibility to RVR 6000.

ALSF-2

MISSED APPROACH: Climb to 3000 direct IDLOC and on track 025° to FASHE and hold.

D-ATIS 125.025 379.925	ST. LOUIS APP CON 132.125 360.6	ST. LOUIS TOWER 120.05 284.6	GND CON 121.9 348.6 (Inbound) 121.65 377.175 (Outbound) 118.925 227.125 (Rwy 11/29)	CLNC DEL 119.5 363.1	CPDLC
--	---	--	---	--------------------------------	-------



ELEV 617

D

TDZE 605

Rwy 6-24 7603 X 150
Rwy 11-29 9000 X 150
Rwy 12L-30R 9013 X 150
Rwy 12R-30L 11020 X 150

HIRL all Rwy
TDZ/CL Rwy 11, 12L, 12R, 29, and 30R

3000	IDLOC	FASHE	HIXOM	TYRSH	
CEVTA 1.4 NM to RW30R	RELEY 2100	EXALE 3500	HIXOM 5000	TYRSH 5000	
RW30R					
1100	2100	3500	5000	5000	
1.4	3.1 NM	4.2 NM	4.4 NM	2.9 NM	
CATEGORY	A	B	C	D	E
LPV	DA	805/18 200 (200-1/2)			
LNAV/VNAV	DA	914/24 309 (300-1/2)			
LNAV	MDA	1020/24 415 (500-1/2)		1020/40 415 (500-3/4)	

ST LOUIS, MISSOURI
Amdt 2B 17APR25

38°45'N-90°22'W

ST LOUIS LAMBERT INTL (STL)
RNAV (GPS) Y RWY 30R

WAAS CH 73000 W30A	APP CRS 303°	Rwy Ldg TDZE Apt Elev	9013 605 617
--	------------------------	-----------------------------	---

RNAV (GPS) Y RWY 30R
ST LOUIS LAMBERT INTL (STL)

RNP APCH - GPS.

RADAR required for procedure entry.

T For uncompensated Baro-VNAV systems, LNAV/VNAV NA below -15°C or above 54°C. LNAV procedure NA during simultaneous operations. Use of FD or AP required during simultaneous operations. Simultaneous approach authorized with Rwy 29. For inop ALS, increase LPV Cat E visibility to RVR 4000, LNAV/VNAV all Cats visibility to RVR 4500, LNAV Cat C/D/E visibility to RVR 6000.

ALSF-2



MISSED APPROACH: Climb to 3000 direct IDLOC and on track 025° to FASHE and hold.

D-ATIS	
125.025	
379.925	

ST. LOUIS APP CON
132.125 360.6

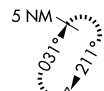
ST. LOUIS TOWER
120.05 284.6

GND CON
121.9 348.6 (Inbound)
121.65 377.175 (Outbound)
118.925 227.125 (Rwy 11/29)

CLNC DEL
119.5 363.1

CPD/C

MISSED APCH FIX



MSA R763R 23 NM

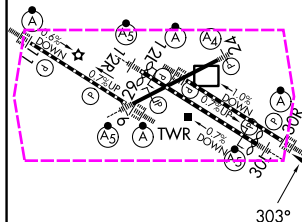
3000



ELEV 617

D TDZE 605

Rwy 6-24 7603 X 150
Rwy 11-29 9000 X 150
Rwy 12L-30R 9013 X 150
Rwy 12R-30L 11020 X 150




HIRE all Rwy's

TDZ/CL Rwys 11, 12L, 12R, 29, and 30R



HIXOM TYRSH

TYRSH



	<div style="border: 1px solid black; padding: 2px; text-align: center;"> SECRET </div>
--	---

GP 3.00°
TCH 57

10157

CATEGORY	A	B	C	D	E
----------	---	---	---	---	---

LPV	DA	805/18	200 (200-1/2)
-----	----	--------	---------------

11/11/11	

DA	914/24	309 (300-1/2)
----	--------	---------------

YNAV		

LNAB	MDA	1020/24	415 (500- $\frac{1}{2}$)	1020/40	415 (500- $\frac{3}{4}$)
------	-----	---------	---------------------------	---------	---------------------------

ST LOUIS, MISSOURI

Amdt 2B 17APR25

38°45'N-90°22'W

ST LOUIS LAMBERT INTL (STL)

RNAV (GPS) Y RWY 30R