

ST. LOUIS, MISSOURI

AL-360 (FAA)

25107

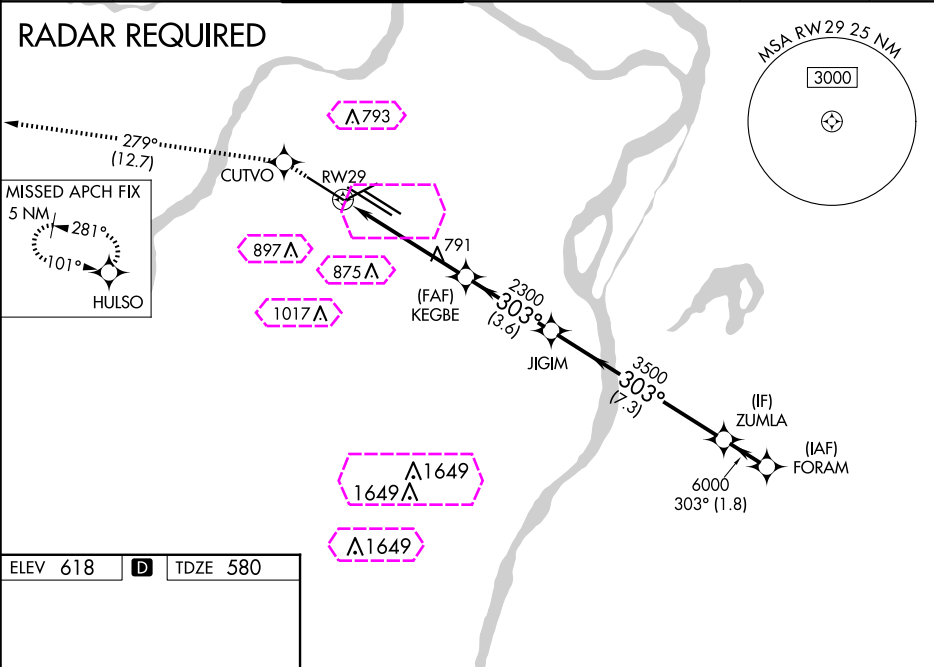
WAAS CH <b>42500</b> <b>W29A</b>	APP CRS <b>303°</b>	Rwy Idg TDZE <b>580</b> Apt Elev <b>618</b>
--	------------------------	---

# RNAV (GPS) Y RWY 29

ST LOUIS LAMBERT INTL (STL)

<p>▼ For uncompensated Baro-VNAV systems, LNAV/VNAV NA below -16°C (4°F) or above 54°C (130°F). Rwy 29 helicopter visibility reduction below ¾ SM NA. Simultaneous approach authorized with Rwy 30R/L. LNAV procedure NA during simultaneous operations. Use of FD or AP providing RNAV track guidance required during simultaneous operations. DME/DME RNP-0.3 NA. For inop ALS, increase LPV all Cats visibility to RVR 6000, increase LNAV/VNAV Cat E visibility to 1¾, increase LNAV Cat A and B visibility to 1, Cat E visibility to 1¾.</p>	ALSf-2 	MISSED APPROACH: Climb to 3000 direct CUTVO and on track 279° to HULSO and hold.
---	------------	---

D-ATIS <b>125.025</b> <b>379.925</b>	ST. LOUIS APP CON <b>132.125 360.6</b>	ST. LOUIS TOWER <b>132.475 239.275</b>	GND CON <b>121.9 348.6</b> (Inbound) <b>121.65 377.175</b> (Outbound) <b>118.925 227.125</b> (Rwy 11/29)	CLNC DEL <b>119.5 363.1</b>	CPDLC
--	---	---	---	--------------------------------	-------



3000	CUTVO	tr 279°	HULSO	VGSI and RNAV glidepath not coincident (VGSI Angle 3.00/TCH 73).	
*LNAV only		*1.5 NM to RW29	KEGBE	JIGIM	ZUMLA
RW29		2300	2300	3500	6000
1.5		3.7 NM	3.6 NM	7.3 NM	1.8 NM
CATEGORY		A	B	C	D
LPV DA		943/40 363 (400-¾)			
LNAV/VNAV DA		1074/60 494 (500-1¼)			
LNAV MDA		1100/40	520 (500-¾)	1100/50	520 (500-1)
				1100/60	520 (500-1¼)

WAAS CH <b>42500</b> <b>W29A</b>	APP CRS <b>303°</b>	Rwy Ldg TDZE <b>580</b> Apt Elev <b>618</b>
--	------------------------	---

RNAV (GPS) Y RWY 29

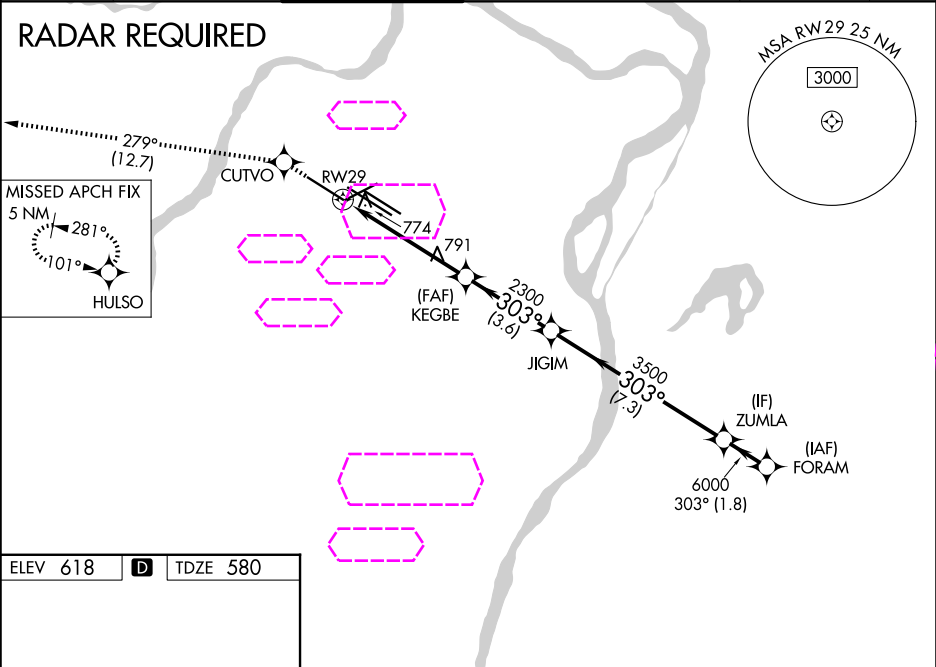
ST LOUIS LAMBERT INTL (STL)

⚠ For uncompensated Baro-VNAV systems, LNAV/VNAV NA below -16°C (4°F) or above 54°C (130°F). Rwy 29 helicopter visibility reduction below ¾ SM NA. Simultaneous approach authorized with Rwy 30R/L. LNAV procedure NA during simultaneous operations. Use of FD or AP providing RNAV track guidance required during simultaneous operations. DME/DME RNP-0.3 NA. For inop ALS, increase LPV all Cats visibility to RVR 6000, increase LNAV/VNAV Cat E visibility to 1¾, increase LNAV Cat A and B visibility to 1, Cat E visibility to 1¾.

ALSf-2

MISSED APPROACH:  
Climb to 3000 direct CUTVO and on track 279° to HULSO and hold.

D-ATIS <b>125.025</b> <b>379.925</b>	ST. LOUIS APP CON <b>132.125 360.6</b>	ST. LOUIS TOWER <b>132.475 239.275</b>	GND CON <b>121.9 348.6</b> (Inbound) <b>121.65 377.175</b> (Outbound) <b>118.925 227.125</b> (Rwy 11/29)	CLNC DEL <b>119.5 363.1</b>	CPDLC
--	---	---	---	--------------------------------	-------



3000	CUTVO	tr 279°	HULSO	VGSI and RNAV glidepath not coincident (VGSI Angle 3.00°/TCH 73).	
*LNAV only		*1.5 NM to RW29	KEGBE 2300	JIGIM	ZUMLA 6000
RW29		3.7 NM	3.6 NM	7.3 NM	1.8 NM
CATEGORY		A	B	C	D
LPV DA		943/40 363 (400-¾)			
LNAV/VNAV DA		1074/60 494 (500-1¼)			
LNAV MDA		1100/40	520 (500-¾)	1100/50 520 (500-1)	1100/60 520 (500-1¼)