

ST LOUIS, MISSOURI

AL-360 (FAA)

25107

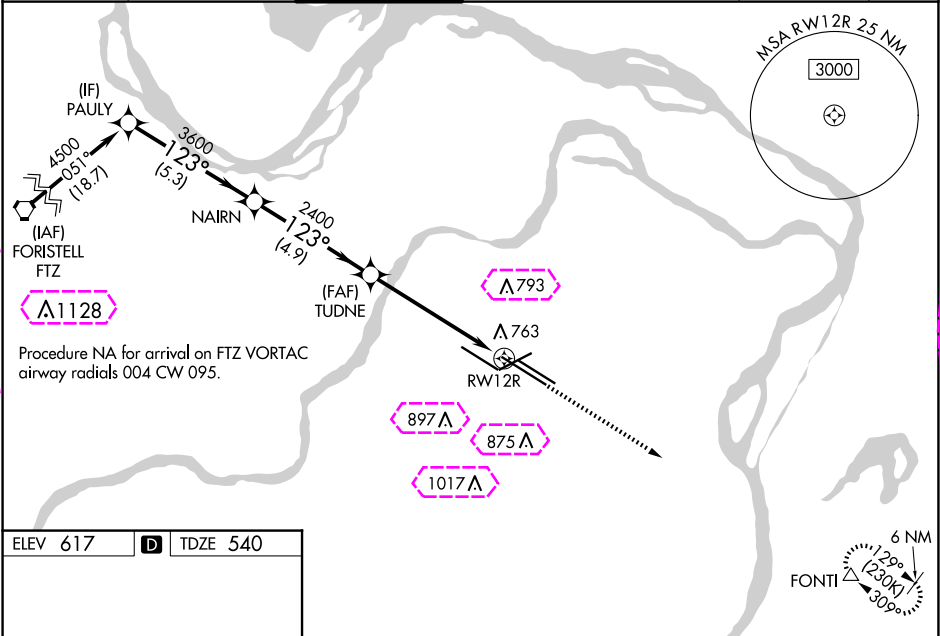
WAAS CH <b>78121</b> <b>W12B</b>	APP CRS <b>123°</b>	Rwy Idg <b>10552</b> TDZE <b>540</b> Apt Elev <b>617</b>
--	------------------------	--

# RNAV (GPS) Y RWY 12R

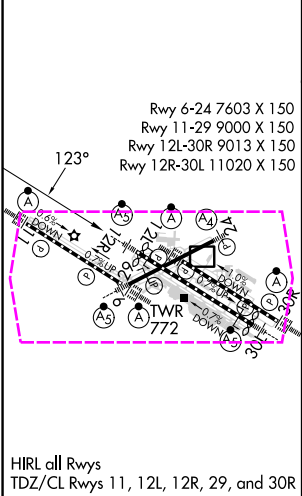
ST LOUIS LAMBERT INTL (STL)

RNP APCH - GPS. ▼ Rwy 12R helicopter visibility reduction below RVR 4000 NA. For uncompensated Baro-VNAV systems, LNAV/VNAV NA below -16°C or above 54°C. Simultaneous approach authorized with Rwy 11. LNAV procedure NA during simultaneous operations. Use of FD or AP required during simultaneous operations. For inop ALS, increase LPV Cat E visibility to RVR 4000, LNAV/VNAV all Cats visibility to 1½ SM, LNAV Cats A/B visibility to RVR 5500, and LNAV Cat C/D/E visibility to 1¾ SM.	MALSR 	MISSED APPROACH: Climb to 5000 direct FONTI and hold, continue climb-in-hold to 5000.
--	-----------	---

D-ATIS <b>125.025</b> <b>379.925</b>	ST. LOUIS APP CON <b>132.125 360.6</b>	ST. LOUIS TOWER <b>118.5 257.7</b>	GND CON <b>121.9 348.6</b> (Inbound) <b>121.65 377.175</b> (Outbound) <b>118.925 227.125</b> (Rwy 11/29)	CLNC DEL <b>119.5 363.1</b>	CPDLC
--	---	---------------------------------------	---	--------------------------------	-------



ELEV 617	<b>D</b>	TDZE 540
----------	----------	----------



PAULY		VGSI and RNAV glidepath not coincident (VGSI Angle 3.00°/TCH 71).			5000	FONTI △
4500		NAIRN		TUDNE		
	123°			2400	1.3 NM to RW12R	
GP 3.00° TCH 54		3600		2400		RW12R
	5.3 NM	4.9 NM	4.4 NM	1.3		
CATEGORY	A	B	C	D	E	
LPV DA	740/18 200 (200-½)					
LNAV/ VNAV DA	1103-1¼ 563 (500-1¼)					
LNAV MDA	1020/40 480 (500-¾)		1020/50 480 (500-1)			

ST LOUIS, MISSOURI

Amdt 1E 17APR25

38°45'N-90°22'W

ST LOUIS LAMBERT INTL (STL)

# RNAV (GPS) Y RWY 12R

25219

WAAS CH <b>78121</b> <b>W12B</b>	APP CRS <b>123°</b>	Rwy Ldg <b>10552</b> TDZE <b>540</b> Apt Elev <b>617</b>
--	------------------------	--

RNAV (GPS) Y RWY 12R  
ST LOUIS LAMBERT INTL (STL)

RNP APCH - GPS.

**V** Rwy 12R helicopter visibility reduction below RVR 4000 NA. For uncompensated Baro-VNAV systems, LNAV/VNAV NA below -16°C or above 54°C. Simultaneous approach authorized with Rwy 11. LNAV procedure NA during simultaneous operations. Use of FD or AP required during simultaneous operations. For inop ALS, increase LPV Cat E visibility to RVR 4000, LNAV/VNAV all Cts visibility to 1% SM, LNAV Cats A/B visibility to RVR 5500, and LNAV Cat C/D/E visibility to 1% SM.

MALSR



**MISSED APPROACH:** Climb to 5000 direct FONTI and hold, continue climb-in-hold to 5000.

D-ATIS

125.025  
379.925

ST. LOUIS APP CON

132.125 360.6

ST. LOUIS TOWER

118.5 257.7

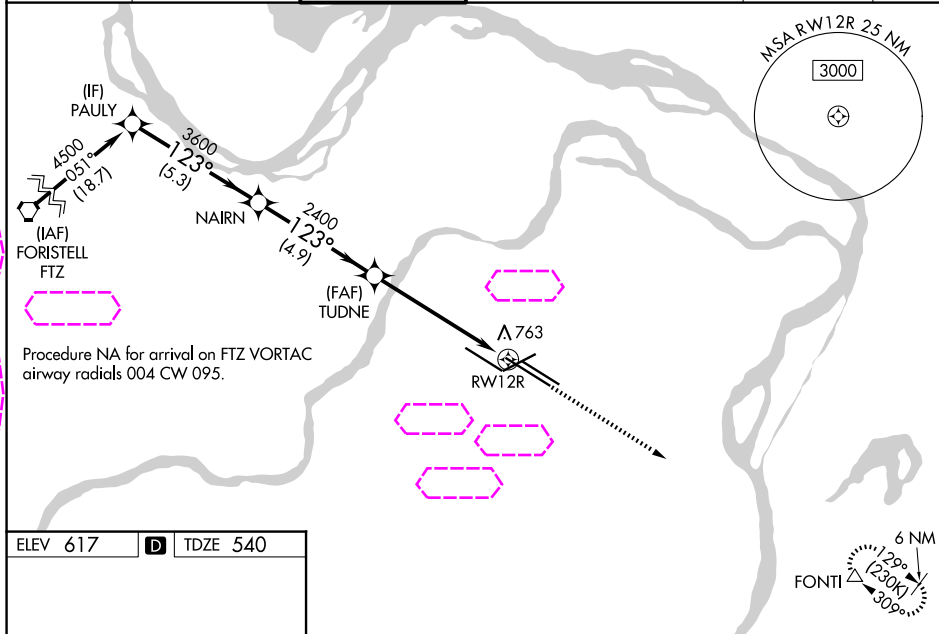
GND CON

121.9 348.6 (Inbound)  
121.65 377.175 (Outbound)  
118.925 227.125 (Rwy 11/29)

CLNC DEL

119.5 363.1

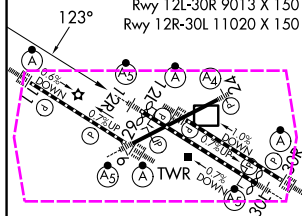
CPDLC



ELEV 617

<b>D</b>	TDZE 540
----------	----------

Rwy 6-24 7603 X 150  
Rwy 11-29 9000 X 150  
Rwy 12L-30R 9013 X 150  
Rwy 12R-30L 11020 X 150



HIRL all Rwys

ST LOUIS, MISSOURI

Amdt 1E 17APR25

38°45'N-90°22'W

ST LOUIS LAMBERT INTL (STL)

RNAV (GPS) Y RWY 12R