

ST LOUIS LAMBERT INTL (STL)

WAAS CH 69499 W12A	APP CRS 123°	Rwy Idg 8956 TDZE 541 Apt Elev 617
--	------------------------	---

RNP APCH - GPS.

RADAR required for procedure entry.

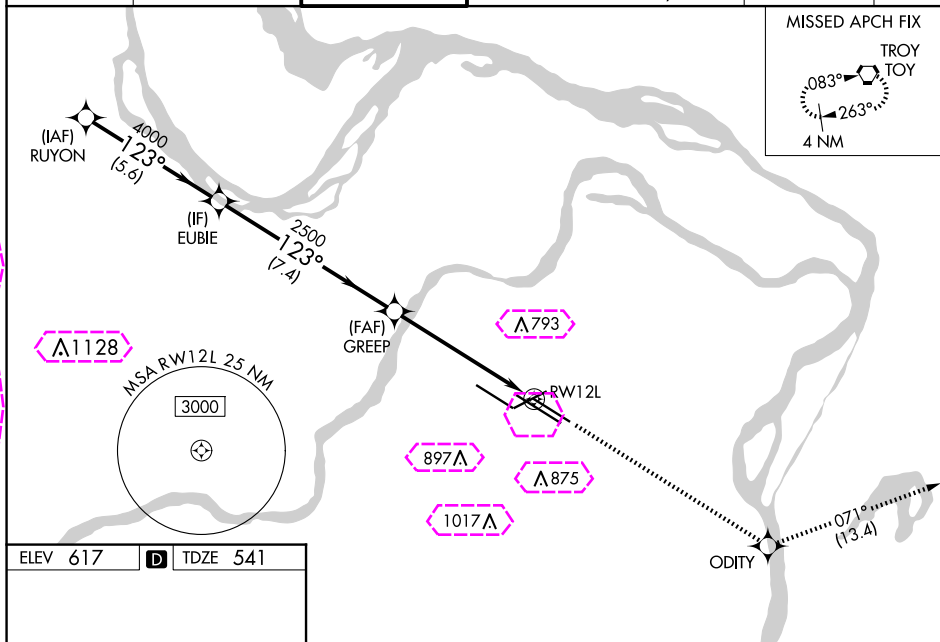
▼ For uncompensated Baro-VNAV systems, LNAV/VNAV NA below -16°C or above 54°C. Simultaneous approach authorized with Rwy 11. LNAV procedure NA during simultaneous operations. Use of FD or AP required during simultaneous operations. For inop ALS, increase LPV all Cats visibility to RVR 6000, LNAV/VNAV all Cats visibility to 1½ SM, and LNAV Cat C/D/E visibility to 1½ SM.

ALSF-2

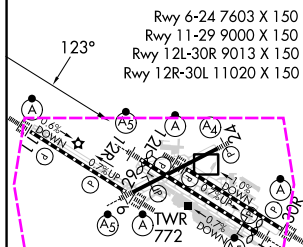


MISSED APPROACH: Climb to 3000 direct ODITY and on track 071° to TOY VORTAC and hold.

D-ATIS 125.025 379,925	ST. LOUIS APP CON 132.125 360.6	ST. LOUIS TOWER 120.05 284.6	GND CON 121.9 348.6 (Inbound) 121.65 377.175 (Outbound) 118.925 227.125 (Rwy 11/29)	CLNC DEL 119.5 363.1	CPDLC
--	---	--	---	--------------------------------	-------



ELEV 617	D	TDZE 541
----------	----------	----------



HIRL all Rwys

TDZ/CL Rwy's 11, 12L, 12R, 29, and 30R

ST LOUIS, MISSOURI

Amdt 2E 17APR25

38°45'N-90°22'W

ST LOUIS LAMBERT INTL (STL)

RNAV (GPS) Y RWY 12L


ST LOUIS, MISSOURI

AL-360 (FAA)

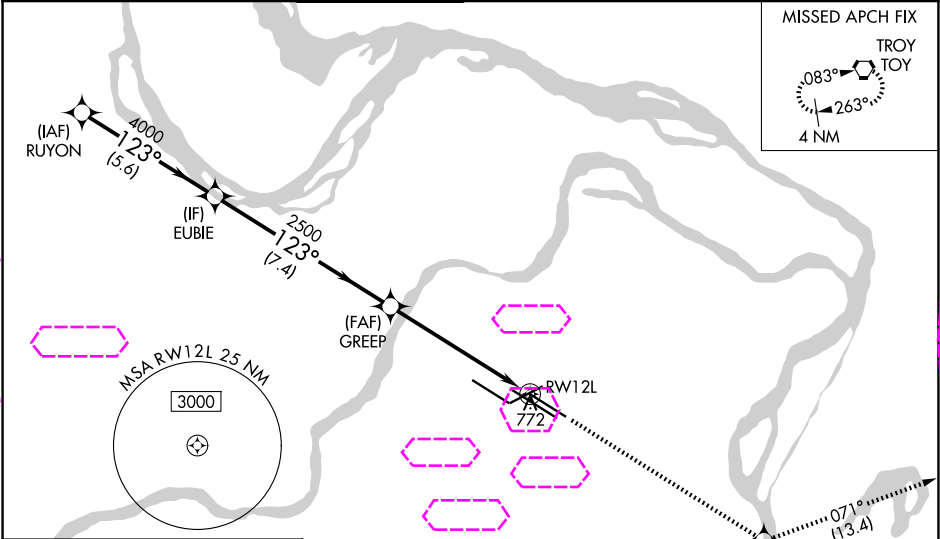
25219

WAAS CH 69499 W12A	APP CRS 123°	Rwy Ldg 8956 TDZE 541 Apt Elev 617
--	------------------------	---

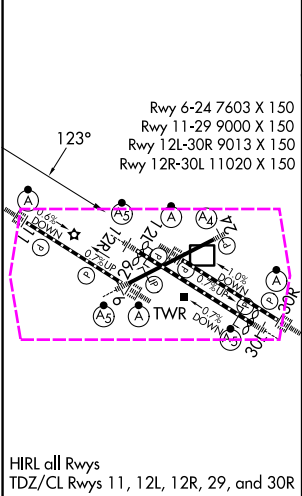
RNAV (GPS) Y RWY 12L
ST LOUIS LAMBERT INTL (STL)

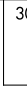


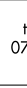
RNP APCH - GPS.		ALSF-2 	MISSED APPROACH: Climb to 3000 direct ODITY and on track 071° to TOY VORTAC and hold.
RADAR required for procedure entry.			
<div><div>▼</div><div>For uncompensated Baro-VNAV systems, LNAV/VNAV NA below -16°C or above 54°C. Simultaneous approach authorized with Rwy 11. LNAV procedure NA during simultaneous operations. Use of FD or AP required during simultaneous operations. For inop ALS, increase LPV all Cats visibility to RVR 6000, LNAV/VNAV all Cats visibility to 1½ SM, and LNAV Cat C/D/E visibility to 1½ SM.</div></div>			

D-ATIS 125.025 379.925	ST. LOUIS APP CON 132.125 360.6	ST. LOUIS TOWER 120.05 284.6	GND CON 121.9 348.6 (Inbound) 121.65 377.175 (Outbound) 118.925 227.125 (Rwy 11/29)	CLNC DEL 119.5 363.1	CPDLC
--	---	--	---	--------------------------------	-------



ELEV 617	D	TDZE 541
----------	----------	----------



VGSI and RNAV glidepath not coincident (VGSI Angle 3.00/TCH 56).					3000 	ODITY 	tr 071° 	TOY 
RUYON	EUBIE		GREEP	1.4 NM to RW12L		RW12L		
5000	4000		2500					
GP 3.00° TCH 54								
5.6 NM		7.4 NM		4.5 NM		1.4 NM		
CATEGORY	A	B	C	D	E			
LPV DA	951/50 410 (400-1)							
LNAV/ VNAV DA	1040/60 499 (500-1¼)							
LNAV MDA	1040/24 499 (500-½)		1040/50 499 (500-1)		1040/60 499 (500-1¼)			

ST LOUIS, MISSOURI
Amdt 2E 17APR25

38°45'N-90°22'W

ST LOUIS LAMBERT INTL (STL)
RNAV (GPS) Y RWY 12L