

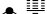

ST. LOUIS, MISSOURI

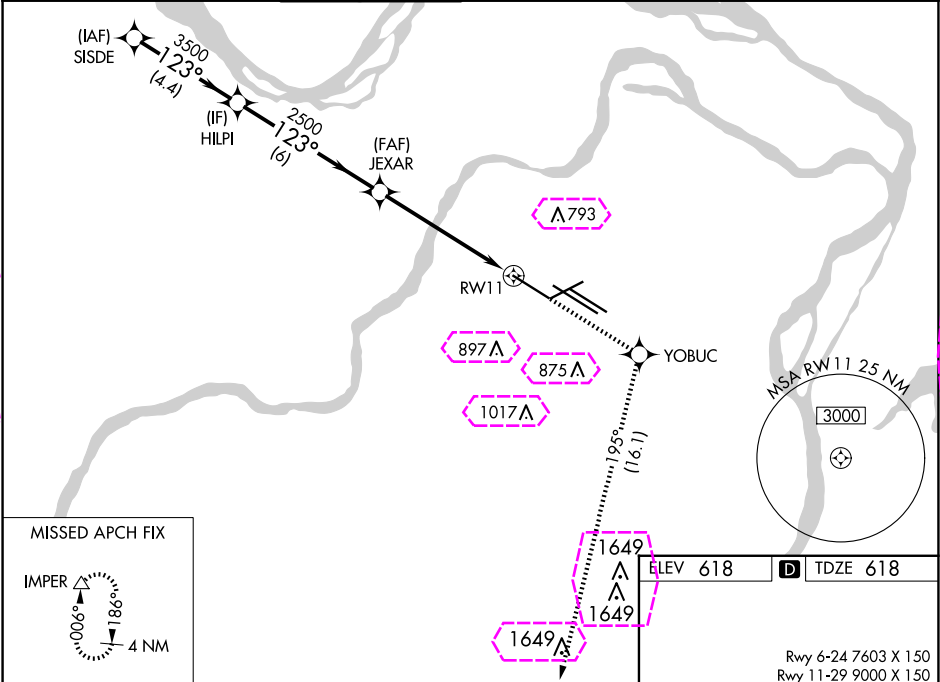
AL-360 (FAA)

25107

WAAS CH 82699 W11A	APP CRS 123°	Rwy Idg TDZE Apt Elev	9000 618 618
----------------------------------------	------------------------	-----------------------------	-----------------------------------------

RNAV (GPS) Y RWY 11
ST LOUIS LAMBERT INTL (STL)

RNP APCH.		<div>ALSIF-2</div> <div></div>		MISSED APPROACH: Climb to 3000 direct YOBUC and on track 195° to IMPER and hold.	
<div> Simultaneous approach authorized. Use of FD or AP required during simultaneous operations. LNAV procedure NA during simultaneous operations. For uncompensated Baro-VNAV systems, LNAV/VNAV NA below -16°C or above 54°C. For inop ALS, increase LPV Cat E visibility to RVR 4000 and LNAV Cat E visibility to 1¼ SM.</div>					
<div>D-ATIS</div> <div>125.025</div> <div>379.925</div>	<div>ST. LOUIS APP CON</div> <div>132.125 360.6</div>	<div>ST. LOUIS TOWER</div> <div>132.475 239.275</div>	<div>GND CON</div> <div>121.9 348.6 (Inbound)</div> <div>121.65 377.175 (Outbound)</div> <div>118.925 227.125 (Rwy 11/29)</div>	<div>CLNC DEL</div> <div>119.5 363.1</div>	<div>CPDLC</div>



VGSI and RNAV glidepath not coincident (VGSI Angle 3.00/TCH 67°).						3000	YOBUC	IMPER
GP 3.00° TCH 55						↑	✧	△
SISDE						tr 195°		
5000						*LNAV only		
HILPI						*1.1 NM to RWY 11		
JEXAR						RWY 11		
3500								
2500								
4.4 NM								
6 NM								
4.5 NM								
1.1								
CATEGORY	A	B	C	D	E			
LPV DA	868/18 250 (300-½)							
LNAV/VNAV DA	960/40 342 (400-¾)							
LNAV MDA	1040/24	422 (500-½)	1040/40 422 (500-¾)	1040/50	422 (500-1)			
						HIRL all Rwy's TDZ/CL Rwy's 11, 12L, 12R, 29, and 30R		

ST. LOUIS, MISSOURI
Orig-E 30JAN20

38°45'N-90°22'W

ST LOUIS LAMBERT INTL (STL)
RNAV (GPS) Y RWY 11

ST. LOUIS, MISSOURI

AL-360 (FAA)

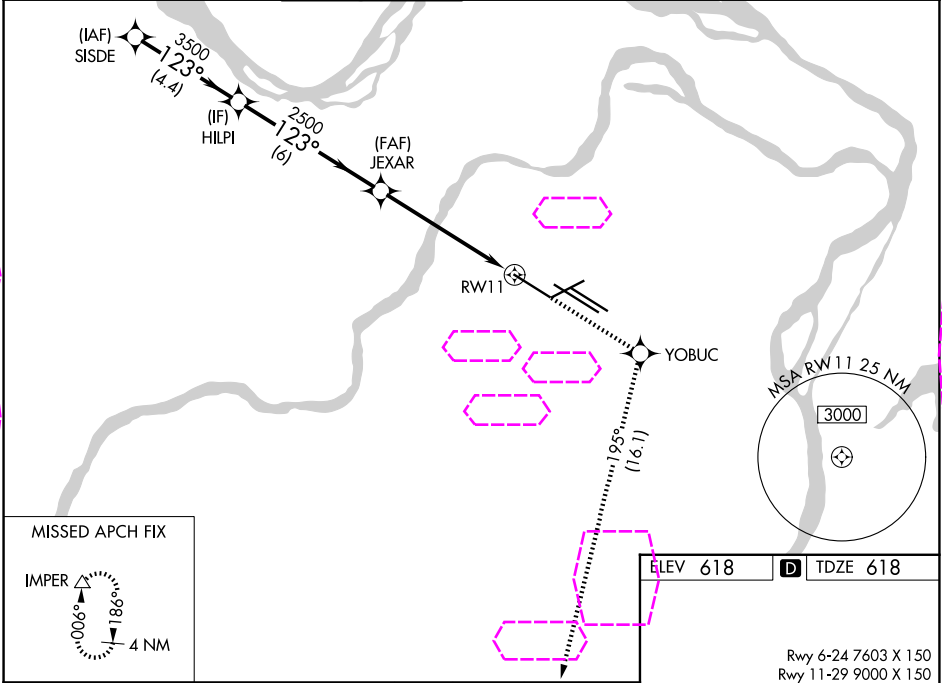
25219

WAAS CH 82699 W11A	APP CRS 123°	Rwy Ldg TDZE Apt Elev	9000 618 618
----------------------------------------	------------------------	-----------------------------	-----------------------------------------

RNAV (GPS) Y RWY 11

ST LOUIS LAMBERT INTL (STL)

RNP APCH.		ALSF-2		MISSED APPROACH: Climb to 3000 direct YOBUC and on track 195° to IMPER and hold.	
<div><div></div><div>Simultaneous approach authorized. Use of FD or AP required during simultaneous operations. LNAV procedure NA during simultaneous operations. For uncompensated Baro-VNAV systems, LNAV/VNAV NA below -16°C or above 54°C. For inop ALS, increase LPV Cat E visibility to RVR 4000 and LNAV Cat E visibility to 1½ SM.</div></div>		<div><div></div><div></div></div>			
D-ATIS 125.025 379.925	ST. LOUIS APP CON 132.125 360.6	ST. LOUIS TOWER 132.475 239.275	GND CON 121.9 348.6 (Inbound) 121.65 377.175 (Outbound) 118.925 227.125 (Rwy 11/29)		CLNC DEL 119.5 363.1 CPDLC



VGSI and RNAV glidepath not coincident (VGSI Angle 3.00/TCH 67°).		3000	YOBC	tr 195°	IMPER
CATEGORY	A	B	C	D	E
LPV DA	868/18 250 (300-½)				
LNAV/VNAV DA	960/40 342 (400-¾)				
LNAV MDA	1040/24	422 (500-½)	1040/40 422 (500-¾)	1040/50	422 (500-1)
HIRL all Rwys TDZ/CL Rwy 11, 12L, 12R, 29, and 30R					

ST. LOUIS, MISSOURI
Orig-E 30JAN20

38°45'N-90°22'W

ST LOUIS LAMBERT INTL (STL) RNAV (GPS) Y RWY 11

NC-3, 07 AUG 2025 to 04 SEP 2025

NC-3, 07 AUG 2025 to 04 SEP 2025