

APP CRS 303°	Rwy Idg TDZE Apt Elev	9013 605 618
------------------------	-----------------------------	---

RNAV (RNP) Z RWY 30R

ST LOUIS LAMBERT INTL (STL)

T For uncompensated Baro-VNAV systems, procedure NA below -16°C (4°F) or above 54°C (130°F). GPS required. Simultaneous approach authorized with Rwy 29, except for arrivals at JYAAR and PEJAA. Use of FD or AP required during simultaneous operations. For inop ALS, increase RNP 0.30 all Cats visibility to RVR 6000.

ALSF-2



MISSED APPROACH: Climb to 1100 then climbing right turn to 3000 direct FASHE and hold.

D-ATIS
125.025
379.925

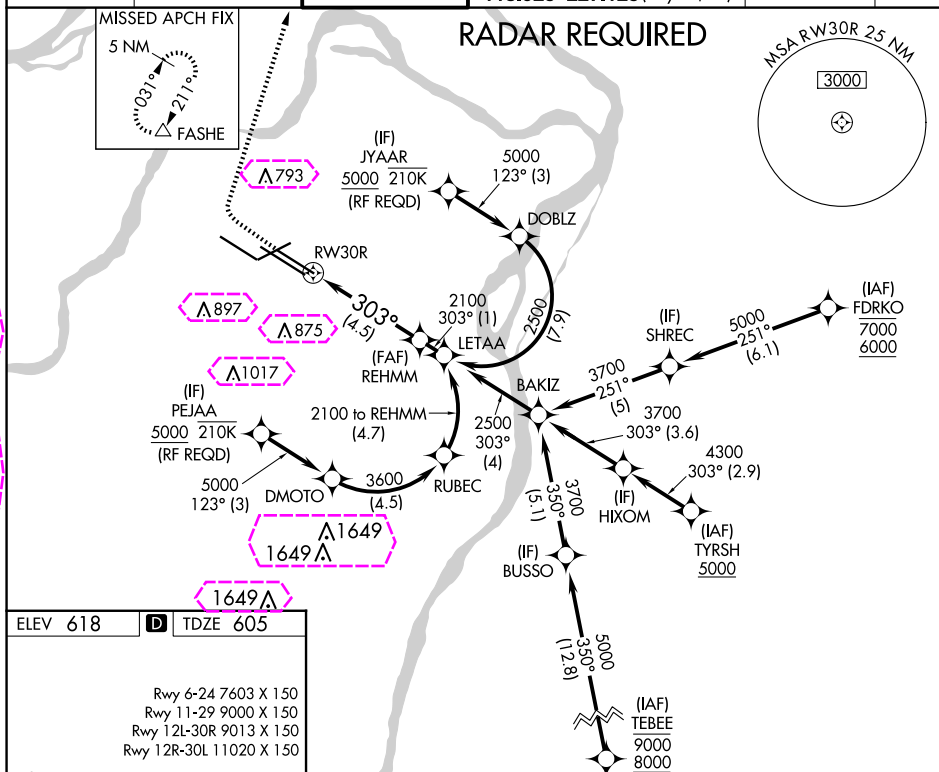
ST. LOUIS APP CON
132.125 360.6

ST. LOUIS TOWER
120.05 284.6

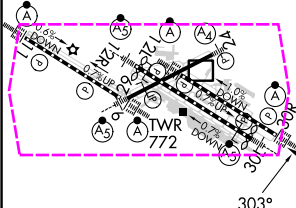
GND CON
121.9 348.6 (Inbound)
121.65 377.175 (Outbound)
118.925 227.125 (Rwy 11/29)

CLNC DEL
119.5 363.1

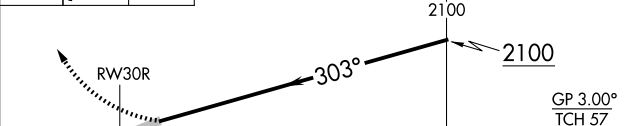
CPDLC



ELEV 618	D	TDZE 605
Rwy 6-24 7603 X 150 Rwy 11-29 9000 X 150 Rwy 12L-30R 9013 X 150 Rwy 12R-30L 11020 X 150		



1100 ↑	3000 ↗	FASHE △	See planview for multiple IF locations.	REHMM ↓
-----------	-----------	------------	---	------------



	4.5 NM			
CATEGORY	A	B	C	D
RNP 0.30 DA	969/40 364 (400-3/4)			

AUTHORIZATION REQUIRED

HIRL all Rwys
TDZ/CL Rwys 11, 12L, 12R, 29, and 30R

ST. LOUIS, MISSOURI
Orig-C 29MAR18

38°45'N-90°22'W

ST LOUIS LAMBERT INTL (STL)
RNAV (RNP) Z RWY 30R

ST. LOUIS, MISSOURI

AL-360 (FAA)

25219

APP CRS	Rwy Ldg	9013
303°	TDZE	605
	Apt Elev	618

RNAV (RNP) Z RWY 30R

ST LOUIS LAMBERT INTL (STL)

For uncompensated Baro-VNAV systems, procedure NA below -16°C (4°F) or above 54°C (130°F). GPS required. Simultaneous approach authorized with Rwy 29, except for arrivals at JYAAR and PEJAA. Use of FD or AP required during simultaneous operations. For inop ALS, increase RNP 0.30 all Cats visibility to RVR 6000.

ALSF-2

MISSED APPROACH: Climb to 1100 then climbing right turn to 3000 direct FASHE and hold.

D-ATIS 125.025 379.925	ST. LOUIS APP CON 132.125 360.6	ST. LOUIS TOWER 120.05 284.6	GND CON 121.9 348.6 (Inbound) 121.65 377.175 (Outbound) 118.925 227.125 (Rwy 11/29)	CLNC DEL 119.5 363.1	CPDLC
------------------------------	------------------------------------	---------------------------------	--	-------------------------	-------

