

ST. LOUIS, MISSOURI

AL-360 (FAA)

25107

APP CRS	Rwy Idg	30679
303°	TDZE	583
	Apt Elev	617

RNAV (RNP) Z RWY 30L

ST LOUIS LAMBERT INTL (STL)

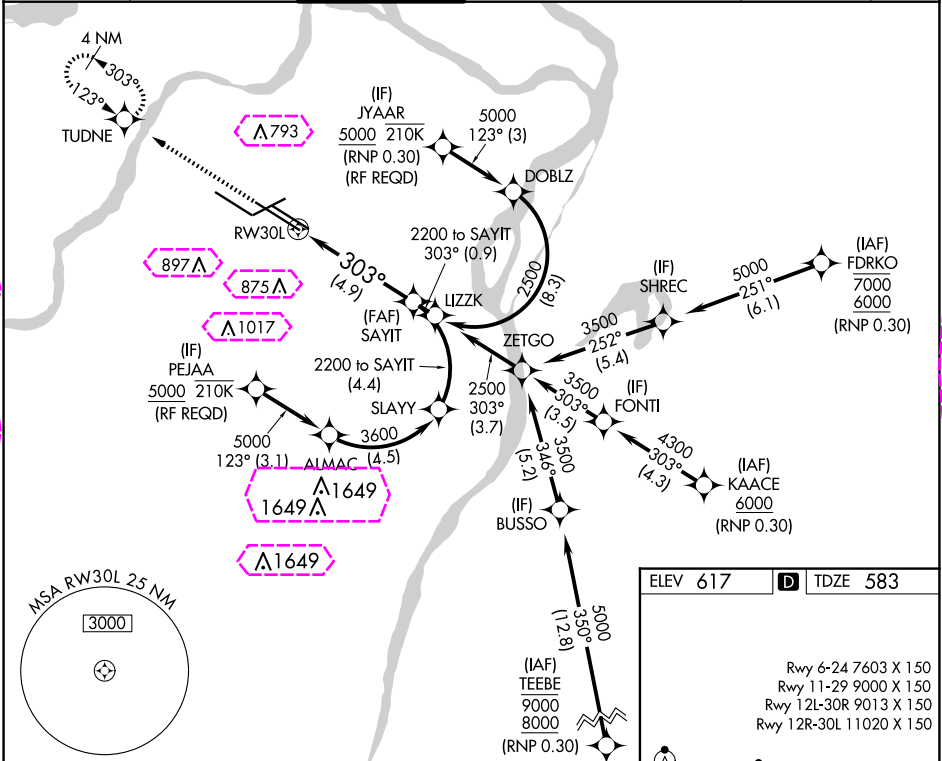
RNP AR APCH - GPS. Authorization required.
From FRDKO, JYAAR, KAACE, or TEEBE, min RNP 0.30. From PEJAA or JYAAR: RF.

MALSR

MISSED APPROACH: Climb to 3000 direct TUDNE and hold, continue climb-in-hold to 3000.

Use of FD or AP required during simultaneous operations. Simultaneous approach authorized with Rwy 29, except for arrivals at JYAAR and PEJAA. For uncompensated Baro-VNAV systems, procedure NA below -18°C or above 54°C. For inop ALS, increase RNP 0.30 all Cats visibility to RVR 6000.

D-ATIS 125.025 379.925	ST. LOUIS APP CON 132.125 360.6	ST. LOUIS TOWER 118.5 257.7	GND CON 121.9 348.6 (Inbound) 121.65 377.175 (Outbound) 118.925 227.125 (Rwy 11/29)	CLNC DEL 119.5 363.1	CPDLC
------------------------------	------------------------------------	--------------------------------	--	-------------------------	-------



3000 TUDNE

See planview for multiple IF locations.

SAYIT 2200

GP 3.00° TCH 58

4.9 NM

303°

RW30L

CATEGORY	A	B	C	D
RNP 0.30 DA	998/40 415 (400-3/4)			

AUTHORIZATION REQUIRED

ELEV 617 TDZE 583

Rwy 6-24 7603 X 150
Rwy 11-29 9000 X 150
Rwy 12L-30R 9013 X 150
Rwy 12R-30L 11020 X 150

HIRL all Rwys
TDZ/CL Rwys 11, 12L, 12R, 29, and 30R

NC-3, 10 JUL 2025 to 07 AUG 2025

NC-3, 10 JUL 2025 to 07 AUG 2025

ST. LOUIS, MISSOURI
Amdt 1B 17APR25

38°45'N-90°22'W

ST LOUIS LAMBERT INTL (STL)
RNAV (RNP) Z RWY 30L

ST. LOUIS, MISSOURI

AL-360 (FAA)

25219

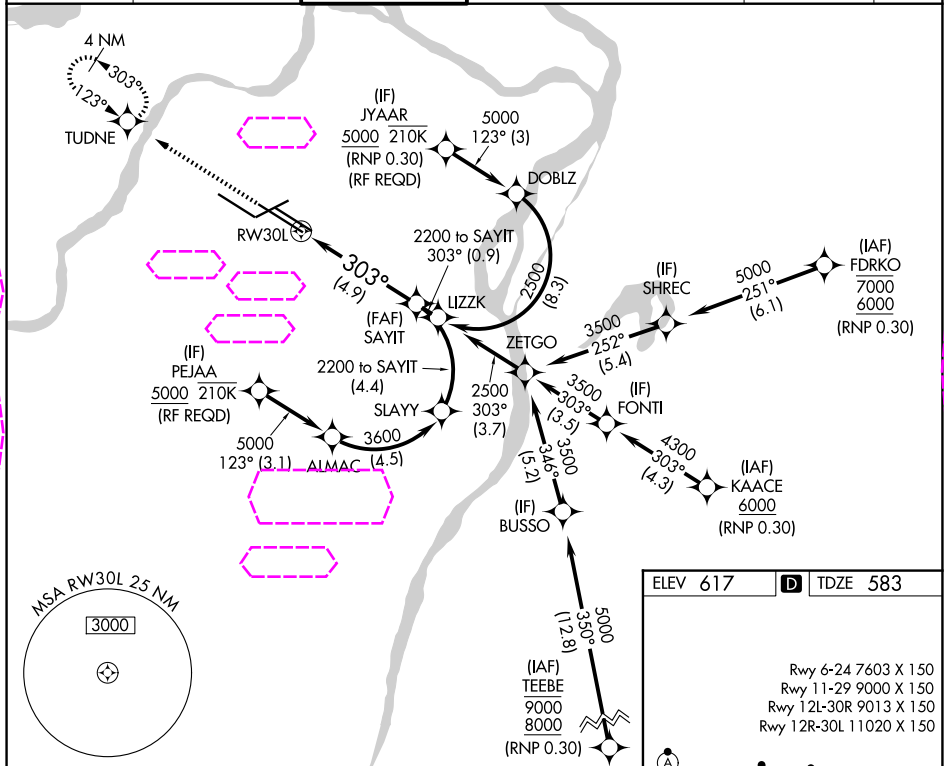
APP CRS	Rwy Ldg	30679
303°	TDZE	583
	Apt Elev	617

RNAV (RNP) Z RWY 30L

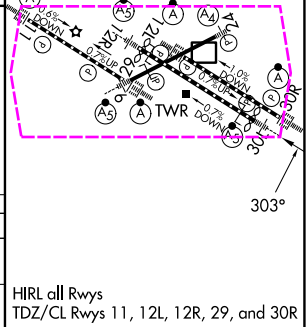
ST LOUIS LAMBERT INTL (STL)

RNP AR APCH - GPS. Authorization required. From FRDKO, JYAAR, KAACE, or TEEBE, min RNP 0.30. From PEJAA or JYAAR: RF.	MALSR 	MISSED APPROACH: Climb to 3000 direct TUDNE and hold, continue climb-in-hold to 3000.
Use of FD or AP required during simultaneous operations. Simultaneous approach authorized with Rwy 29, except for arrivals at JYAAR and PEJAA. For uncompensated Baro-VNAV systems, procedure NA below -18°C or above 54°C. For inop ALS, increase RNP 0.30 all Cats visibility to RVR 6000.		

D-ATIS 125.025 379.925	ST. LOUIS APP CON 132.125 360.6	ST. LOUIS TOWER 118.5 257.7	GND CON 121.9 348.6 (Inbound) 121.65 377.175 (Outbound) 118.925 227.125 (Rwy 11/29)	CLNC DEL 119.5 363.1	CPDLC
------------------------------	------------------------------------	--------------------------------	--	-------------------------	-------



3000	TUDNE	See planview for multiple IF locations.	SAYIT
			2200
RW30L 303° 4.9 NM			
CATEGORY	A	B	C
RNP 0.30 DA	998/40 415 (400-3/4)		
AUTHORIZATION REQUIRED			



ST. LOUIS, MISSOURI
Amdt 1B 17APR25

38°45'N-90°22'W

RNAV (RNP) Z RWY 30L

ST LOUIS LAMBERT INTL (STL)