

ST. LOUIS, MISSOURI

AL-360 (FAA)

25107

APP CRS	Rwy Idg	9000
303°	TDZE	580
	Apt Elev	618

RNAV (RNP) Z RWY 29

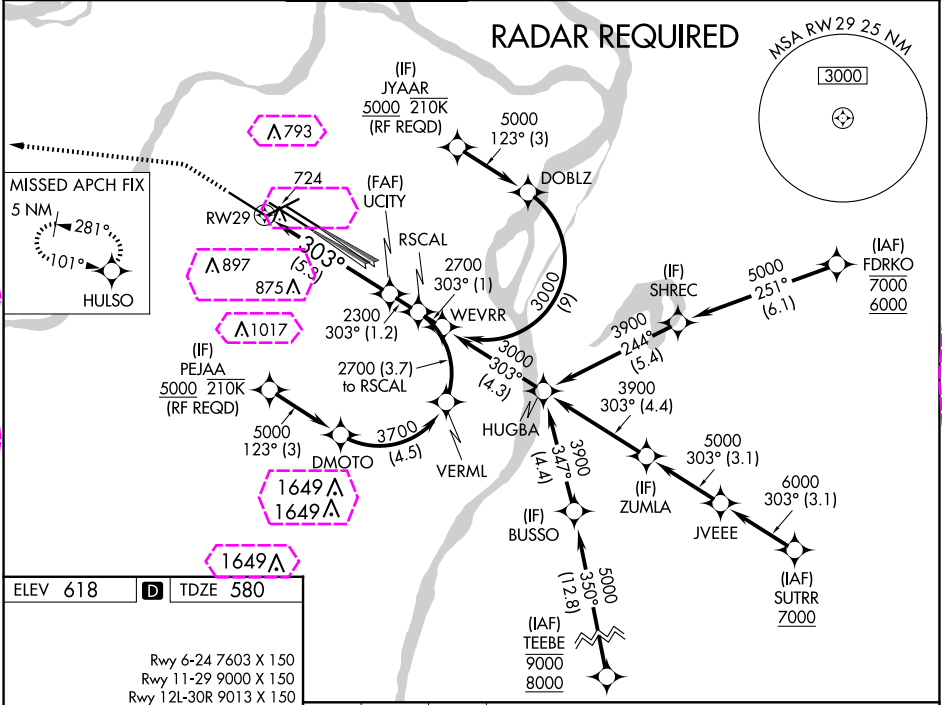
ST LOUIS LAMBERT INTL (STL)

▼ For uncompensated Baro-VNAV systems, procedure NA below -16°C (4°F) or above 54°C (130°F). Simultaneous approach authorized with Rwy 30L/R. Use of FD or AP providing RNAV track guidance required during simultaneous operations. GPS required. For inop ALS, increase RNP 0.12 all Cats visibility to RVR 6000, increase RNP 0.17 all Cats visibility to 1½, and increase RNP 0.30 all Cats visibility to 1¾.

ALSf-2

MISSED APPROACH: Climb to 1100 then climbing left turn to 3000 direct HULSO and hold.

D-ATIS 125.025 379.925	ST. LOUIS APP CON 132.125 360.6	ST. LOUIS TOWER 132.475 239.275	GND CON 121.9 348.6 (Inbound) 121.65 377.175 (Outbound) 118.925 227.125 (Rwy 11/29)	CLNC DEL 119.5 363.1	CPDLC
--	---	---	---	--------------------------------	-------



ELEV 618

D TDZE 580

Rwy 6-24 7603 X 150
Rwy 11-29 9000 X 150
Rwy 12L-30R 9013 X 150
Rwy 12R-30L 11020 X 150

HIRL all Rwys
TDZ/CL Rwys 11, 12L, 12R, 29, and 30R

1100 3000 HULSO

VGSI and RNAV glidepath not coincident (VGSI Angle 3.00°/TCH 73).

See Planview for multiple IF locations.

RW29

UCITY 2300

RSCAL 2700

GP 3.00° TCH 56

CATEGORY	A	B	C	D
RNP 0.12 DA		963/50	383 (400-1)	
RNP 0.17 DA		1035/50	455 (500-1)	
RNP 0.30 DA		1088/60	508 (500-1¼)	

AUTHORIZATION REQUIRED

ST. LOUIS, MISSOURI
Orig-B 17AUG17

38°45'N-90°22'W

ST LOUIS LAMBERT INTL (STL)
RNAV (RNP) Z RWY 29

NC-3, 10 JUL 2025 to 07 AUG 2025

NC-3, 10 JUL 2025 to 07 AUG 2025

APP CRS	Rwy Ldg	9000
303°	TDZE	580
	Apt Elev	618

RNAV (RNP) Z RWY 29

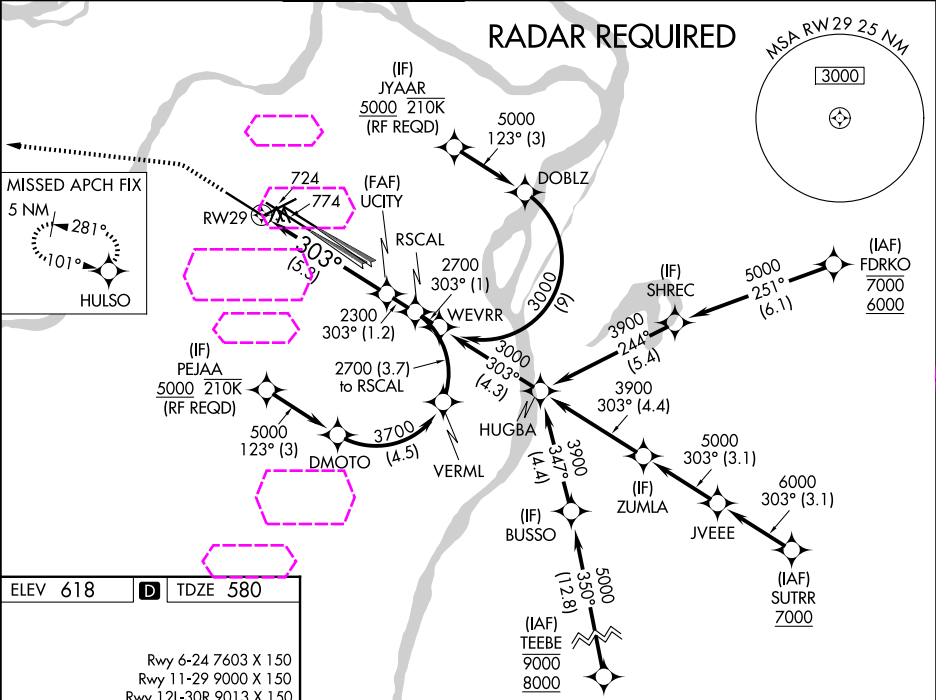
ST LOUIS LAMBERT INTL (STL)

▼ For uncompensated Baro-VNAV systems, procedure NA below -16°C (4°F) or above 54°C (130°F). Simultaneous approach authorized with Rwy 30L/R. Use of FD or AP providing RNAV track guidance required during simultaneous operations. GPS required. For inop ALS, increase RNP 0.12 all Cats visibility to RVR 6000, increase RNP 0.17 all Cats visibility to 1½, and increase RNP 0.30 all Cats visibility to 1¾.

ALS-F-2

MISSED APPROACH: Climb to 1100 then climbing left turn to 3000 direct HULSO and hold.

D-ATIS 125.025 379.925	ST. LOUIS APP CON 132.125 360.6	ST. LOUIS TOWER 132.475 239.275	GND CON 121.9 348.6 (Inbound) 121.65 377.175 (Outbound) 118.925 227.125 (Rwy 11/29)	CLNC DEL 119.5 363.1	CPDLC
------------------------------	------------------------------------	------------------------------------	--	-------------------------	-------



ELEV 618

D

TDZE 580

Rwy 6-24 7603 X 150
Rwy 11-29 9000 X 150
Rwy 12L-30R 9013 X 150
Rwy 12R-30L 11020 X 150

1100 3000 HULSO

VGSI and RNAV glidepath not coincident (VGSI Angle 3.00°/TCH 73).

See Planview for multiple IF locations.

GP 3.00° TCH 56

CATEGORY	A	B	C	D
RNP 0.12 DA		963/50	383 (400-1)	
RNP 0.17 DA		1035/50	455 (500-1)	
RNP 0.30 DA		1088/60	508 (500-1½)	

AUTHORIZATION REQUIRED