

ST. LOUIS, MISSOURI

AL-360 (FAA)

25107

APP CRS	Rwy Idg	10553
123°	TDZE	540
	Apt Elev	617

# RNAV (RNP) Z RWY 12R

ST LOUIS LAMBERT INTL (STL)

RNP AR APCH - GPS. Authorization required from HRBEE or RRIPP: RF.

RADAR required for procedure entry.

For uncompensated Baro-VNAV systems, procedure NA below -16°C or above 54°C. For inop ALS, increase RNP 0.30 all Cats visibility to 1½ SM. Simultaneous approach authorized with Rwy 11 except for arrivals at RRIPP and HRBEE. Use of FD or AP required during simultaneous operations.

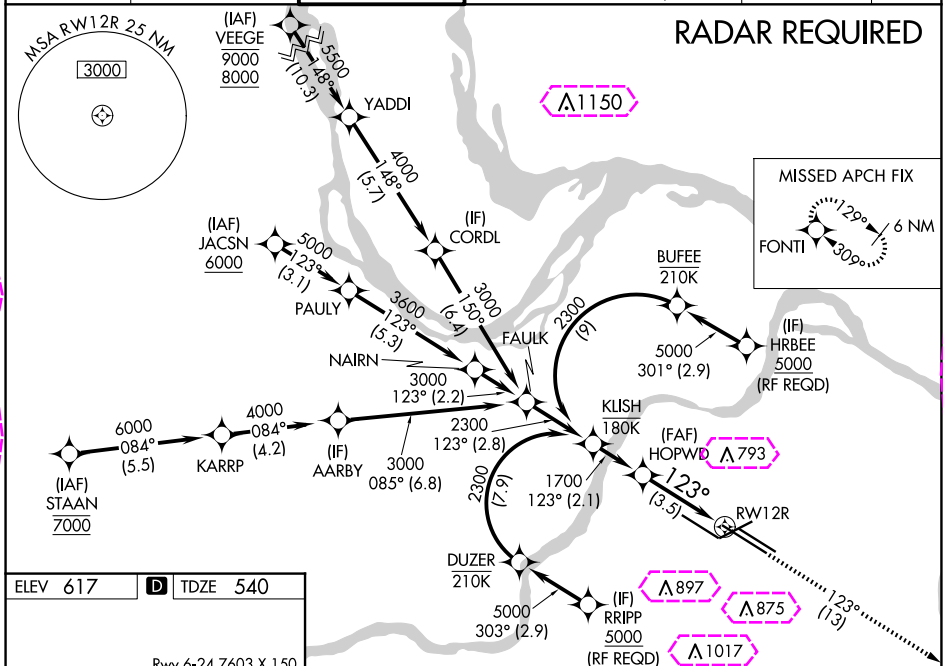
MALSR



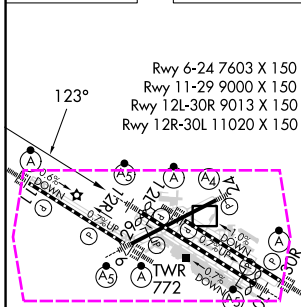
MISSED APPROACH: Climb to 5000 on track 123° to FONTI and hold, continue climb-in-hold to 5000.

D-ATIS 125.025 379.925	ST. LOUIS APP CON 132.125 360.6	ST. LOUIS TOWER 118.5 257.7	GND CON 121.9 348.6 (Inbound) 121.65 377.175 (Outbound) 118.925 227.125 (Rwy 11/29)	CLNC DEL 119.5 363.1	CPDLC
------------------------------	------------------------------------	--------------------------------	--	-------------------------	-------


## RADAR REQUIRED



ELEV 617	D	TDZE 540
----------	---	----------



HIRL all Rwys TDZ/CL Rwys 11, 12L, 12R, 29, and 30R
--

<p>HOPWD</p> <p>1700</p> <p>1700</p> <p>GP 3.00° TCH 54</p> <p>VGSI and RNAV glidepath not coincident (VGSI Angle 3.00/TCH 71).</p> <p>See planview for multiple IF locations.</p>				<p>5000</p> <p>↑</p> <p>tr 123°</p>	<p>FONTI</p> 
<p>123°</p> <p>RW12R</p> <p>3.5 NM</p>					
CATEGORY	A	B	C	D	
RNP 0.30 DA	998/60 458 (400-1¼)				
AUTHORIZATION REQUIRED					

ST. LOUIS, MISSOURI

Orig-D 17APR25

38°45'N-90°22'W

ST LOUIS LAMBERT INTL (STL)

# RNAV (RNP) Z RWY 12R

ST. LOUIS, MISSOURI

AL-360 (FAA)

25219

APP CRS	Rwy Ldg	10553
123°	TDZE	540
	Apt Elev	617

# RNAV (RNP) Z RWY 12R

ST LOUIS LAMBERT INTL (STL)

RNP AR APCH - GPS. Authorization required from HRBEE or RRIPP: RF.

RADAR required for procedure entry.

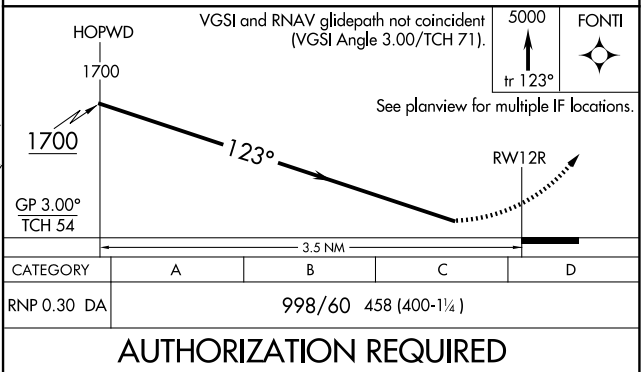
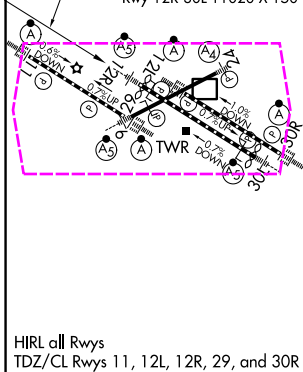
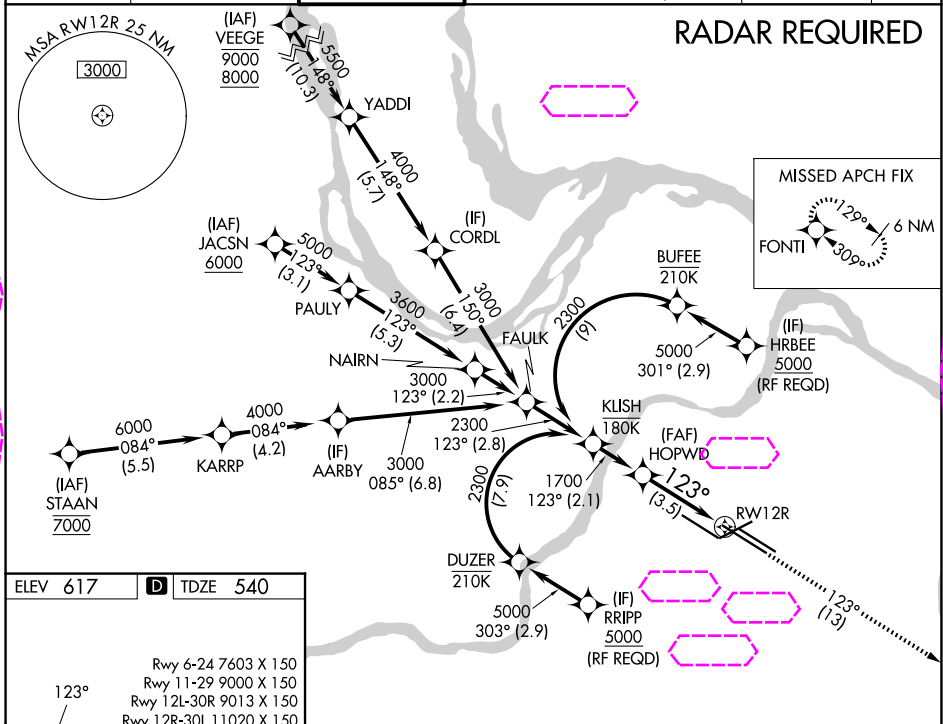
For uncompensated Baro-VNAV systems, procedure NA below -16°C or above 54°C. For inop ALS, increase RNP 0.30 all Cats visibility to 1½ SM. Simultaneous approach authorized with Rwy 11 except for arrivals at RRIPP and HRBEE. Use of FD or AP required during simultaneous operations.

MALSR



MISSED APPROACH: Climb to 5000 on track 123° to FONTI and hold, continue climb-in-hold to 5000.

D-ATIS 125.025 379.925	ST. LOUIS APP CON 132.125 360.6	ST. LOUIS TOWER 118.5 257.7	GND CON 121.9 348.6 (Inbound) 121.65 377.175 (Outbound) 118.925 227.125 (Rwy 11/29)	CLNC DEL 119.5 363.1	CPDLC
------------------------------	------------------------------------	--------------------------------	--	-------------------------	-------



ST. LOUIS, MISSOURI  
Orig-D 17APR25

38°45'N-90°22'W

ST LOUIS LAMBERT INTL (STL)  
RNAV (RNP) Z RWY 12R

NC-3, 07 AUG 2025 to 04 SEP 2025

NC-3, 07 AUG 2025 to 04 SEP 2025