

ST. LOUIS, MISSOURI

AL-360 (FAA)

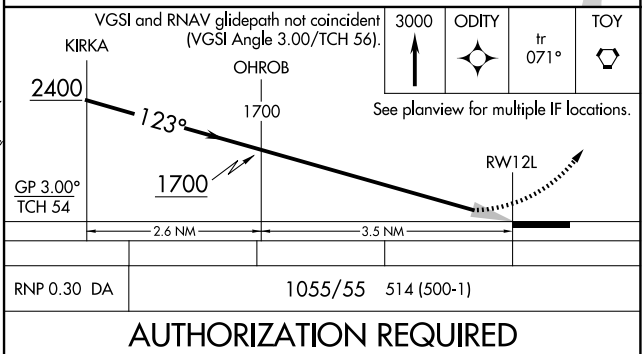
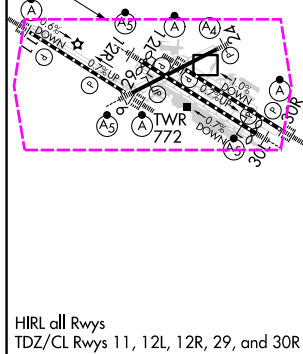
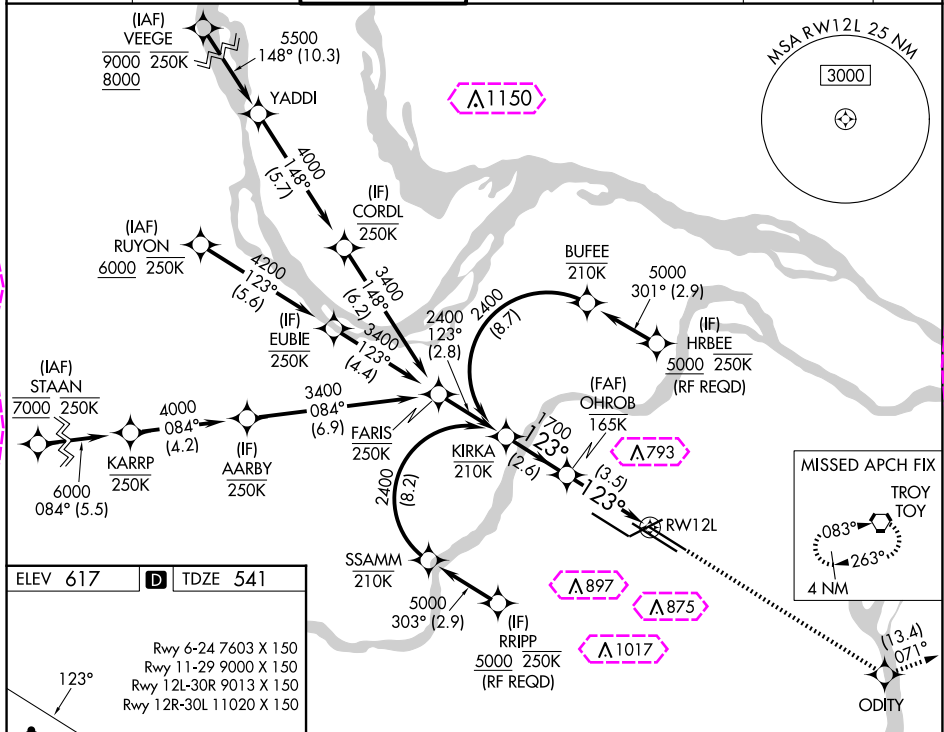
25107

APP CRS	Rwy Idg	8956
123°	TDZE	541
	Apt Elev	617

RNAV (RNP) Z RWY 12L

ST LOUIS LAMBERT INTL (STL)

RNP AR APCH - GPS. Authorization required from HRBEE or RRIPP: RF.			ALSIF-2	MISSED APPROACH: Climb to 3000 direct ODITY and track 071° to TOY VORTAC and hold.	
RADAR required for procedure entry					
▼ Use of FD or AP required during simultaneous operations. Simultaneous approach authorized with Rwy 11, except for arrivals at RRIPP and HRBEE. For uncompensated Baro-VNAV systems, procedure NA below -16°C or above 54°C. For inop ALS, increase RNP 0.30 all Cats visibility to 1½ SM.					
D-ATIS 125.025 379.925	ST. LOUIS APP CON 132.125 360.6	ST. LOUIS TOWER 120.05 284.6	GND CON 121.9 348.6 (Inbound) 121.65 377.175 (Outbound) 118.925 227.125 (Rwy 11/29)	CLNC DEL 119.5 363.1	CPDLC



ST. LOUIS, MISSOURI

Orig-D 17APR25

38°45'N-90°22'W

ST LOUIS LAMBERT INTL (STL)

RNAV (RNP) Z RWY 12L

