

ST. LOUIS, MISSOURI

AL-360 (FAA)

25107

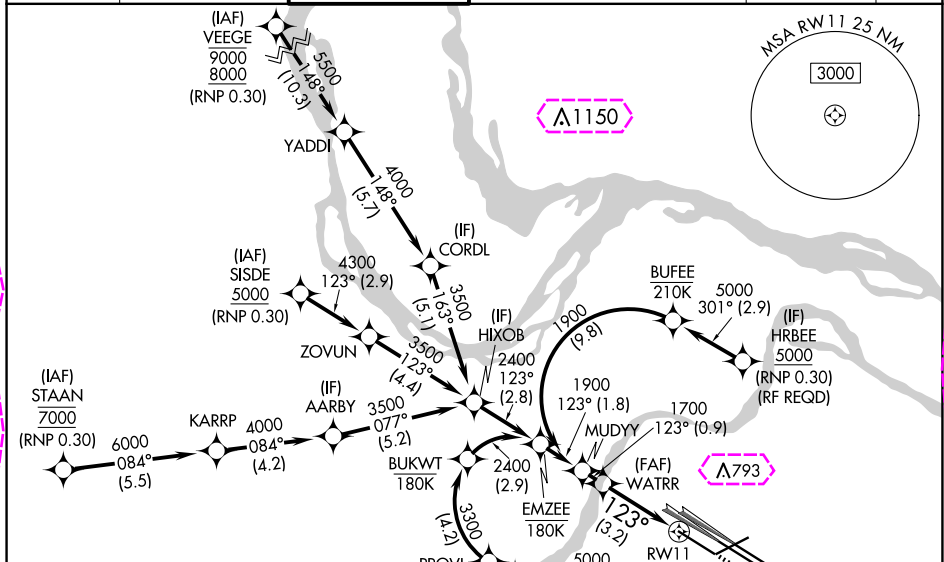
APP CRS	Rwy Idg	9000
123°	TDZE	617
	Apt Elev	617

# RNAV (RNP) Z RWY 11

ST LOUIS LAMBERT INTL (STL)

RNP AR APCH - GPS, min RNP 0.30. Authorization required from HRBEE or RRIPP: RF.	ALSF-2	MISSED APPROACH: Climb to 1100 then climbing right turn to 3000 direct IMPER and hold.
RADAR required for procedure entry.		
Simultaneous approach authorized with Rwy 12L/R, except for arrivals at RRIPP and HRBEE. Use of FD or AP providing RNAV track guidance required during simultaneous operations. For uncompensated Baro-VNAV systems, procedure NA below -16°C or above 54°C. For inop ALS, increase RNP 0.30 all Cats visibility to RVR 4500.		

D-ATIS	ST. LOUIS APP CON	ST. LOUIS TOWER	GND CON	CLNC DEL	CPDLC
125.025	132.125 360.6	132.475 239.275	121.9 348.6 (Inbound)	119.5 363.1	
379.925			121.65 377.175 (Outbound)		
			118.925 227.125 (Rwy 11/29)		



ELEV 617 TDZE 617

Rwy 6-24 7603 X 150  
Rwy 11-29 9000 X 150  
Rwy 12L-30R 9013 X 150  
Rwy 12R-30L 11020 X 150

HIRL all Rwy  
TDZ/CL Rwy 11, 12L, 12R, 29, and 30R

123°

GP 3.00°  
TCH 59

0.9 NM

3.2 NM

1900

1700

123°

1700

1100

3000

IMPER

See planview for multiple IF locations.

CATEGORY	A	B	C	D
RNP 0.30 DA	925/24 308 (400-1/2)			

AUTHORIZATION REQUIRED

ST. LOUIS, MISSOURI

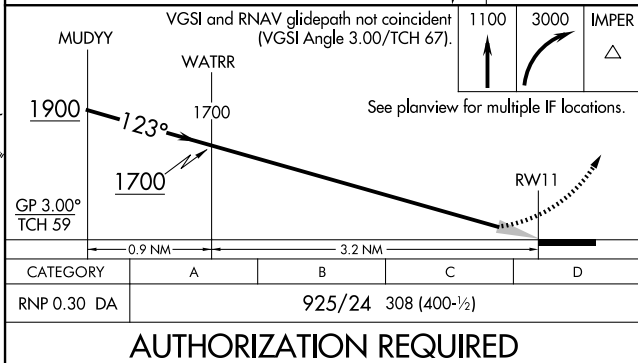
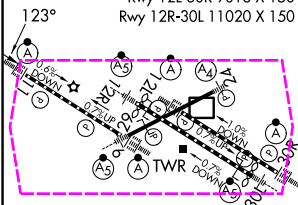
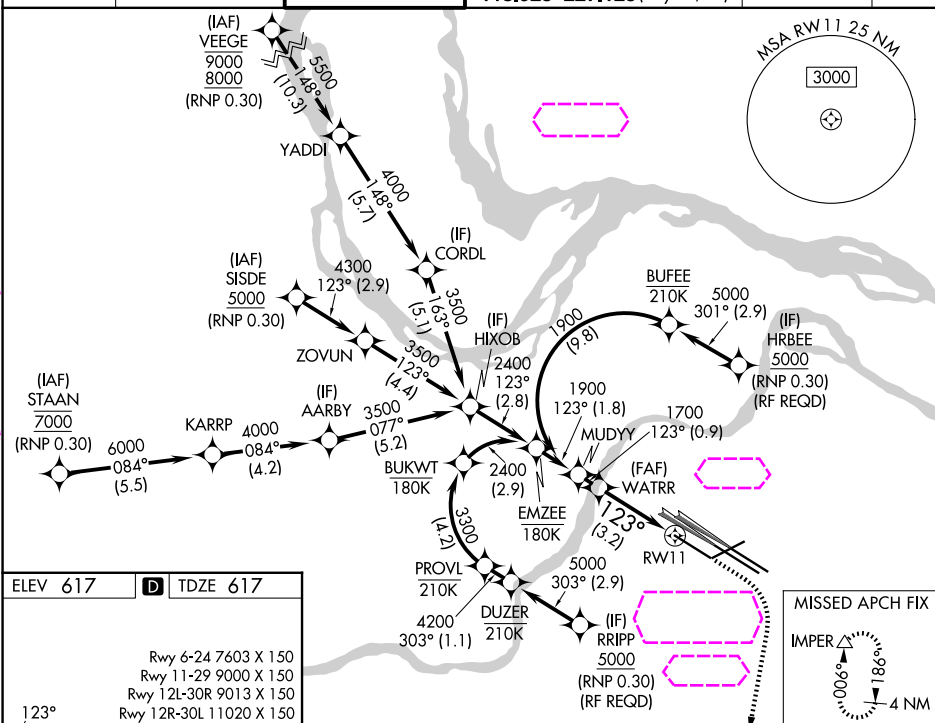
Orig-C 17APR25

38°45'N-90°22'W

ST LOUIS LAMBERT INTL (STL)  
RNAV (RNP) Z RWY 11

RNAV (RNP) Z RWY 11  
ST LOUIS LAMBERT INTL (STL)

CPDLC

ST LOUIS LAMBERT INTL (STL)  
RNAV (RNP) Z RWY 11