

ST. LOUIS, MISSOURI

AL-360 (FAA)

25107

APP CRS  
**064°**

Rwy ldg  
TDZE  
**551**

Apt Elev  
**618**

# RNAV (GPS) RWY 6

ST LOUIS LAMBERT INTL (STL)

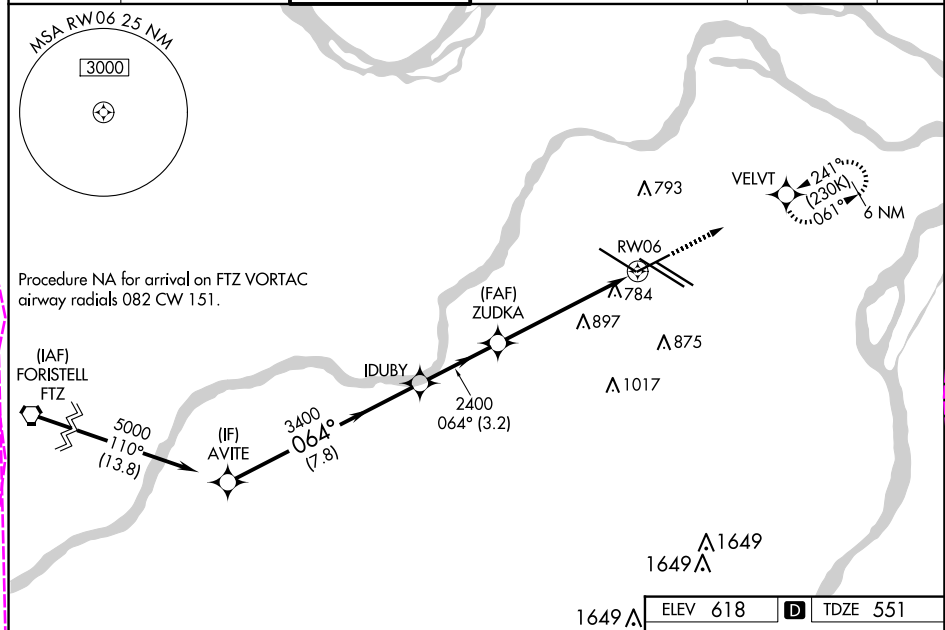
RNP APCH.

▼ WAAS VNAV NA. For uncompensated Baro-VNAV systems, LNAV/VNAV NA below -18°C or above 54°C. For inop ALS increase LNAV/VNAV Cat E visibility to 1½ SM and LNAV Cats C/D/E visibility to 1¾ SM.

MALSR

MISSED APPROACH: Climb to 3000 direct VELVT and hold, continue climb-in-hold to 3000.

D-ATIS	ST. LOUIS APP CON	ST. LOUIS TOWER	GND CON	CLNC DEL	CPDLC
<b>125.025</b> <b>379.925</b>	<b>132.125 360.6</b>	<b>132.475 239.275</b>	<b>121.9 348.6</b> (Inbound) <b>121.65 377.175</b> (Outbound) <b>118.925 227.125</b> (Rwy 11/29)	<b>119.5 363.1</b>	



GP 3.00°  
TCH 50

AVITE

IDUBY

ZUDKA

RW06

3000

VELVT

\*LNAV only

\*1.4 NM to RW06

5000

3400

2400

2400

1649

1649

7.8 NM

3.2 NM

4.3 NM

1.4 NM

CATEGORY	A	B	C	D	E
LNAV/VNAV	DA	1103/60	552 (500-1¼)		

LNAV MDA

1040/24 489 (500-½)

1040/50 489 (500-1)

Rwy 6-24 7603 X 150

Rwy 11-29 9000 X 150

Rwy 12L-30R 9013 X 150

Rwy 12R-30L 11020 X 150

TWR 772

064°

ST. LOUIS, MISSOURI

AL-360 (FAA)

25219

WAAS  
CH **93747**  
**W06A**

APP CRS  
**064°**

Rwy Ldg  
TDZE  
Apt Elev  
**7323**  
**551**  
**617**

**RNAV (GPS) RWY 6**  
ST LOUIS LAMBERT INTL (STL)

RNP APCH - GPS.

▼

For uncompensated Baro-VNAV systems, LNAV/VNAV NA below -16°C or above 54°C. Rwy 6 helicopter visibility reduction below RVR 4000 NA. For inop ALS increase LPV all Cats visibility to RVR 5500; LNAV/VNAV all Cats visibility to 1½ SM; LNAV Cat A and B visibility to RVR 5500; and LNAV Cat C, D, and E visibility to 1½ SM.

MALSR

MISSED APPROACH: Climb to 3000 direct VELVT and hold, continue climb-in-hold to 3000.

D-ATIS  
**125.025**  
**379.925**

ST. LOUIS APP CON  
**132.125 360.6**

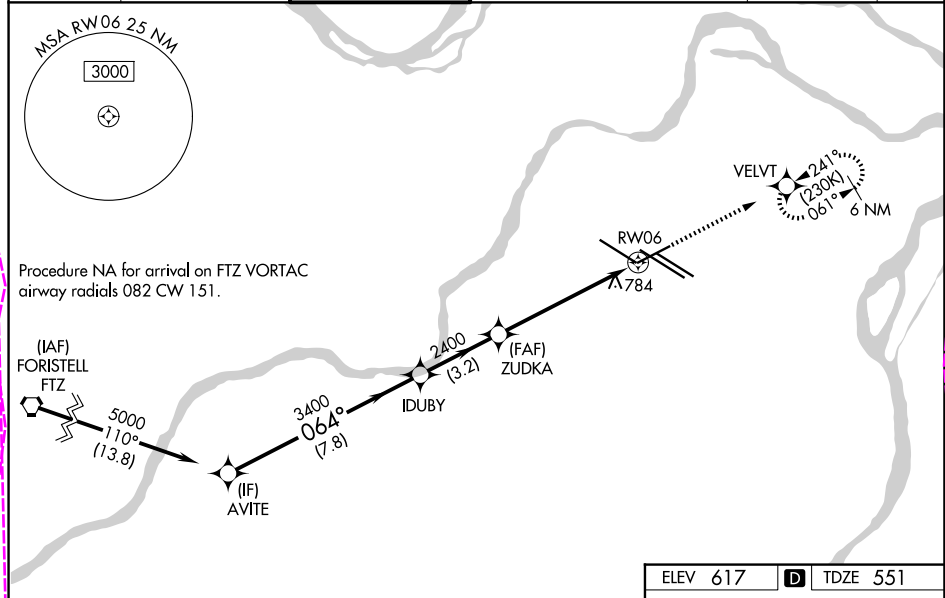
ST. LOUIS TOWER  
**132.475 239.275**

GND CON

**121.9 348.6** (Inbound)  
**121.65 377.175** (Outbound)  
**118.925 227.125** (11/29)

CLNC DEL  
**119.5 363.1**

CPDLC



ELEV 617

**D** TDZE 551

AVITE

IDUBY

ZUDKA

3000

VELVT

5000

064°

3400

2400

1.4 NM to RW06

RW06

GP 3.00°

TCH 54

7.8 NM

3.2 NM

4.3 NM

1.4

CATEGORY	A	B	C	D	E
LPV DA	910/40 359 (300-¾)				
LNAV/VNAV DA	1040/50 489 (500-1)				
LNAV MDA	1040/40 489 (500-¾)		1040/50 489 (500-1)		

Rwy 6-24 7603 X 150

Rwy 11-29 9000 X 150

Rwy 12L-30R 9013 X 150

Rwy 12R-30L 11020 X 150