

ST. LOUIS, MISSOURI

AL-360 (FAA)

25107

WAAS CH <b>87021</b> <b>W24A</b>	APP CRS <b>244°</b>	Rwy Idg <b>7603</b> TDZE <b>534</b> Apt Elev <b>617</b>
--	------------------------	---

# RNAV (GPS) RWY 24

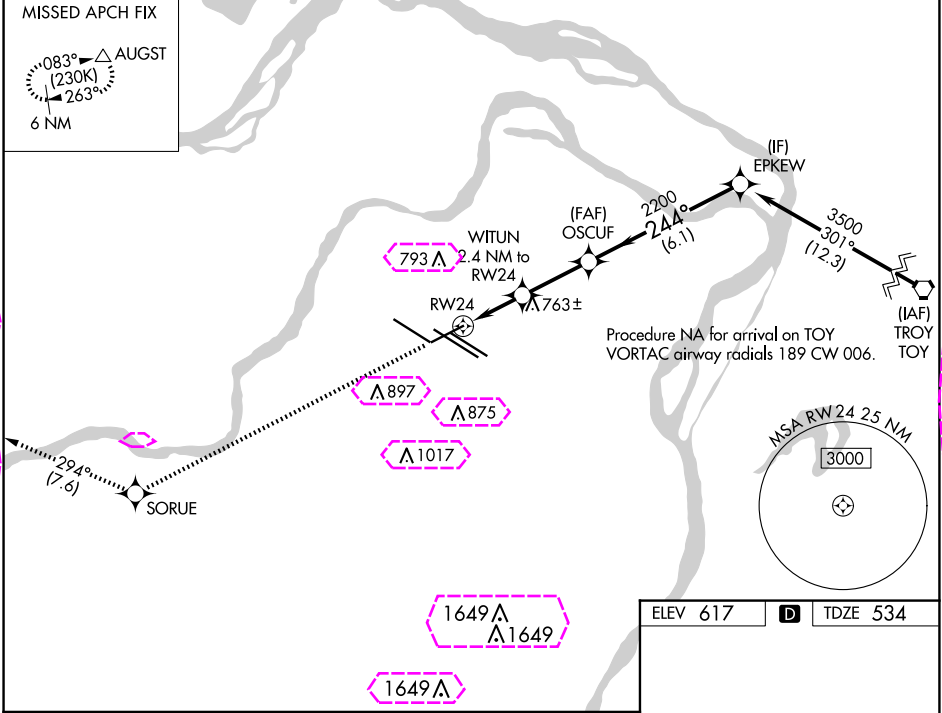
ST LOUIS LAMBERT INTL (STL)

RNP APCH - GPS.  
▼ For uncompensated Baro-VNAV systems, LNAV/VNAV NA below -16°C or above 54°C. Inop table does not apply to LPV. For inop ALS, increase LNAV/VNAV Cat E visibility to 1 3/8 SM and LNAV Cat E visibility to 1 3/8 SM.

MALS  
A4

MISSED APPROACH: Climb to 3000 direct SORUE and on track 294° to AUGST and hold.

D-ATIS <b>125.025</b> <b>379.925</b>	ST. LOUIS APP CON <b>132.125 360.6</b>	ST. LOUIS TOWER <b>120.05 284.6</b>	GND CON <b>121.9 348.6</b> (Inbound) <b>121.65 377.175</b> (Outbound) <b>118.925 227.125</b> (Rwy 11/29)	CLNC DEL <b>119.5 363.1</b>	CPDLC
--	---	--	---	--------------------------------	-------



3000 ↑	SORUE ✱	tr 294° △	AUGST			EPKEW	
<p>WITUN 2.4 NM to RW24 1.5 NM to RW24 OSCUF 2200 244° 2200 3500 GP 3.00° TCH 50 1340 1.5 NM 0.9 NM 2.7 NM 6.1 NM</p>							
CATEGORY		A	B	C	D	E	
LPV DA	734/40 200 (200-¾)						
LNAV/VNAV DA	1015/60 481 (400-1¼)						
LNAV MDA	1080/40 546 (500-¾)			1080-1⅜ 546 (500-1⅝)			

ELEV 617	D	TDZE 534
----------	---	----------

Rwy 6-24 7603 X 150  
Rwy 11-29 9000 X 150  
Rwy 12L-30R 9013 X 150  
Rwy 12R-30L 11020 X 150

HIRL all Rwys  
TDZ/CL Rwy 11, 12L, 12R, 29, and 30R

NC-3, 10 JUL 2025 to 07 AUG 2025

NC-3, 10 JUL 2025 to 07 AUG 2025

ST. LOUIS, MISSOURI

AL-360 (FAA)

25219

WAAS CH <b>87021</b> <b>W24A</b>	APP CRS <b>244°</b>	Rwy Ldg <b>7603</b> TDZE <b>534</b> Apt Elev <b>617</b>
--	------------------------	---

# RNAV (GPS) RWY 24

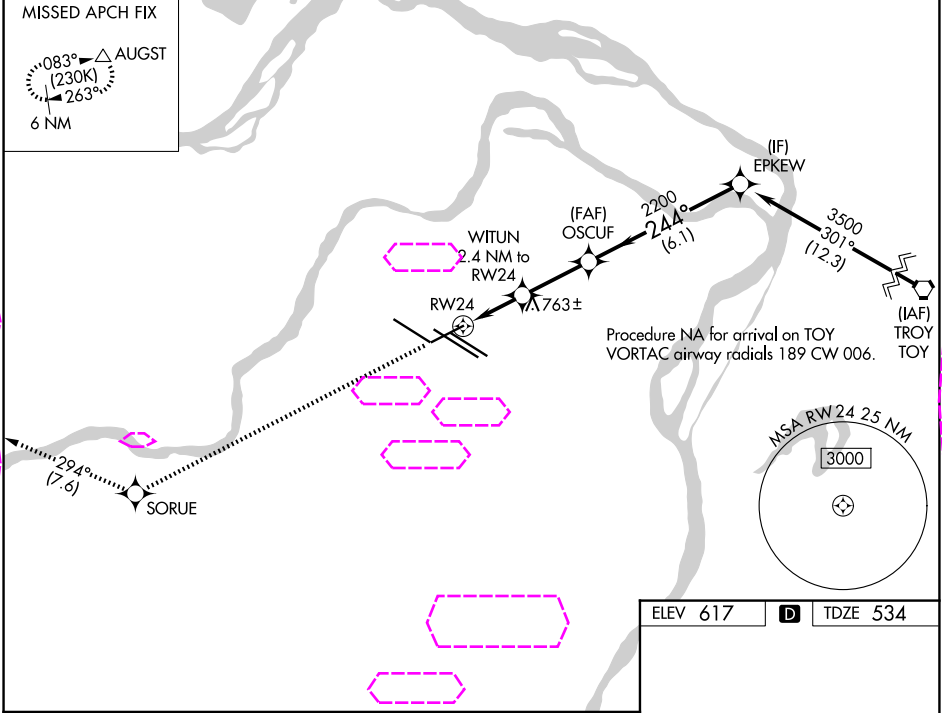
ST LOUIS LAMBERT INTL (STL)

RNP APCH - GPS.  
▼ For uncompensated Baro-VNAV systems, LNAV/VNAV NA below -16°C or above 54°C. Inop table does not apply to LPV. For inop ALS, increase LNAV/VNAV Cat E visibility to 1 3/8 SM and LNAV Cat E visibility to 1 3/8 SM.

MALS  
A4

MISSED APPROACH: Climb to 3000 direct SORUE and on track 294° to AUGST and hold.

D-ATIS <b>125.025</b> <b>379.925</b>	ST. LOUIS APP CON <b>132.125 360.6</b>	ST. LOUIS TOWER <b>120.05 284.6</b>	GND CON <b>121.9 348.6</b> (Inbound) <b>121.65 377.175</b> (Outbound) <b>118.925 227.125</b> (Rwy 11/29)	CLNC DEL <b>119.5 363.1</b>	CPDLC
--	---	--	---	--------------------------------	-------



3000 ↑	SORUE ✱	tr 294° △			
CATEGORY	A	B	C	D	E
LPV DA	734/40 200 (200-¾)				
LNAV/VNAV DA	1015/60 481 (400-1¼)				
LNAV MDA	1080/40 546 (500-¾)		1080-1⅜ 546 (500-1⅜)		

ELEV 617 D TDZE 534

Rwy 6-24 7603 X 150  
Rwy 11-29 9000 X 150  
Rwy 12L-30R 9013 X 150  
Rwy 12R-30L 11020 X 150

244°

GP 3.00° TCH 50

HIRL all Rwys  
TDZ/CL Rwys 11, 12L, 12R, 29, and 30R

NC-3, 07 AUG 2025 to 04 SEP 2025

NC-3, 07 AUG 2025 to 04 SEP 2025