

LOC/DME I-SJW	APP CRS	Rwy Idg	9013
111.3		TDZE	605
Chan 50	303°	Apt Elev	618

ILS or LOC RWY 30R
ST LOUIS LAMBERT INTL (STL)

RADAR required for procedure entry.

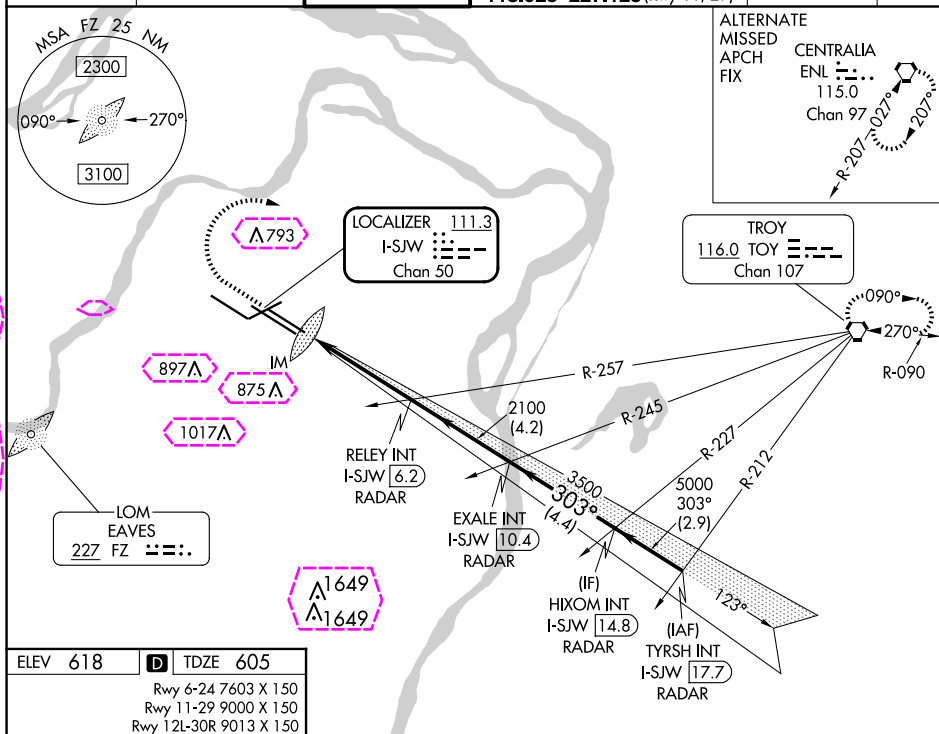
T For inop ALS, increase S-ILS 30R Cat E visibility to RVR 4000 and S-LOC 30R Cat C/D/E visibility to 1% SM. Simultaneous approach authorized with Rwy 29. Simultaneous approach authorized with Rwy 30L requires use of vertical guidance; maintain last assigned altitude until established on glideslope.

ALSF-2

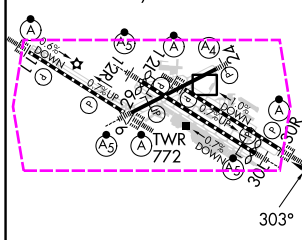


MISSED APPROACH: Climb to 1020 then climbing right turn to 3000 direct TOY VORTAC and hold.

D-ATIS 125.025 379.925	ST. LOUIS APP CON 132.125 360.6	ST. LOUIS TOWER 120.05 284.6	GND CON 121.9 348.6 (Inbound) 121.65 377.175 (Outbound) 118.925 227.125 (Rwy 11/29)	CLNC DEL 119.5 363.1	CPDLC
------------------------------	------------------------------------	---------------------------------	--	-------------------------	-------



ELEV 618	D	TDZE 605
Rwy 6-24 7603 X 150		
Rwy 11-29 9000 X 150		
Rwy 12L-30R 9013 X 150		
Rwy 12R-30L 11020 X 150		



HIRE all Rwy's

TDZ/CL Rwy 11, 12L, 12R, 29, and 30R

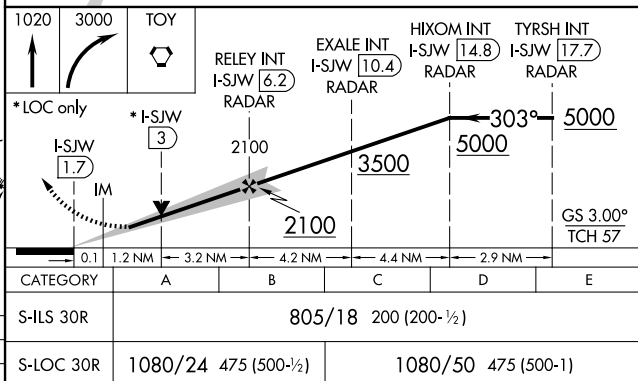
FAF to MAP 4.5 NM

Knots	60	90	120	150	180
Min:Sec	4:30	3:00	2:15	1:48	1:30

ST. LOUIS, MISSOURI

Amdt 12 03JAN19

38°45'N-90°22'W

ST LOUIS LAMBERT INTL (STL)
ILS or LOC RWY 30R

NC-3, 10 JUL 2025 to 07 AUG 2025

NC-3, 10 JUL 2025 to 07 AUG 2025

ST. LOUIS, MISSOURI

AL-360 (FAA)

25219

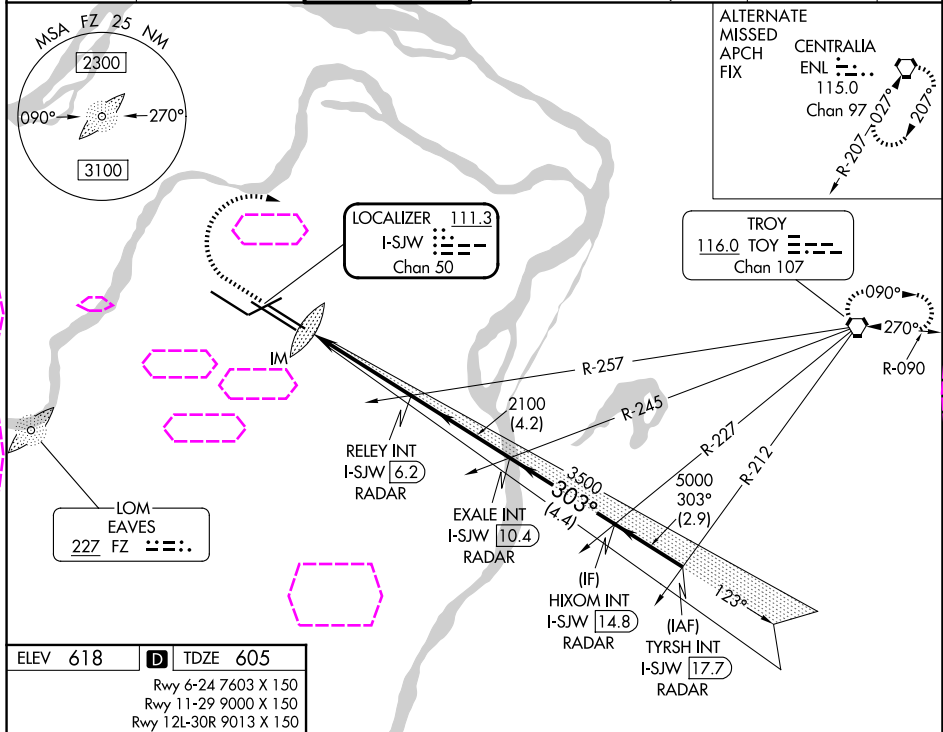
LOC/DME I-SJW 111.3 Chan 50	APP CRS 303°	Rwy Ldg TDZE 605 Apt Elev 618
---	------------------------	---

ILS or LOC RWY 30R

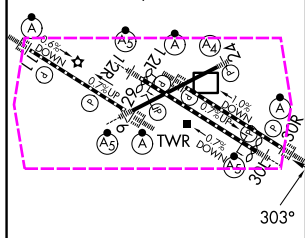
ST LOUIS LAMBERT INTL (STL)

RADAR required for procedure entry. ▼ For inop ALS, increase S-ILS 30R Cat E visibility to RVR 4000 and S-LOC 30R Cat C/D/E visibility to 1 $\frac{1}{2}$ SM. Simultaneous approach authorized with Rwy 29. Simultaneous approach authorized with Rwy 30L requires use of vertical guidance; maintain last assigned altitude until established on glideslope.	ALSF-2 	MISSED APPROACH: Climb to 1020 then climbing right turn to 3000 direct TOY VORTAC and hold.
---	------------	---

D-ATIS 125.025 379.925	ST. LOUIS APP CON 132.125 360.6	ST. LOUIS TOWER 120.05 284.6	GND CON 121.9 348.6 (Inbound) 121.65 377.175 (Outbound) 118.925 227.125 (Rwy 11/29)	CLNC DEL 119.5 363.1	CPDLC
--	---	--	---	--------------------------------	-------



ELEV 618	D TDZE 605
Rwy 6-24 7603 X 150	
Rwy 11-29 9000 X 150	
Rwy 12L-30R 9013 X 150	
Rwy 12R-30L 11020 X 150	



HIRL all Rwy's					
TDZ/CL Rwy's 11, 12L, 12R, 29, and 30R					
FAF to MAP 4.5 NM					
Knots	60	90	120	150	180
Min:Sec	4:30	3:00	2:15	1:48	1:30

1020	3000	TOY	RELEY INT I-SJW 6.2	EXALE INT I-SJW 10.4	HIXOM INT I-SJW 14.8	TYRSH INT I-SJW 17.7
*LOC only	*I-SJW 3					
I-SJW 1.7	IM	2100	3500	5000	303°	5000
GS 3.00° TCH 57						
0.1 1.2 NM 3.2 NM 4.2 NM 4.4 NM 2.9 NM						
CATEGORY	A		B	C	D	E
S-ILS 30R	805/18 200 (200- $\frac{1}{2}$)					
S-LOC 30R	1080/24 475 (500- $\frac{1}{2}$)		1080/50 475 (500-1)			

ST. LOUIS, MISSOURI
Amdt 12 03JAN19

38°45'N-90°22'W

ST LOUIS LAMBERT INTL (STL)

ILS or LOC RWY 30R

NC-3, 07 AUG 2025 to 04 SEP 2025

NC-3, 07 AUG 2025 to 04 SEP 2025