

ST. LOUIS, MISSOURI

AL-360 (FAA)

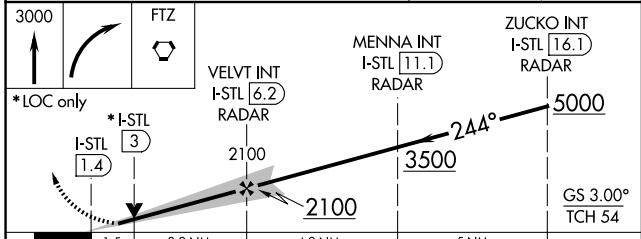
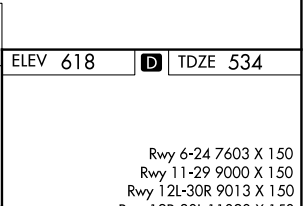
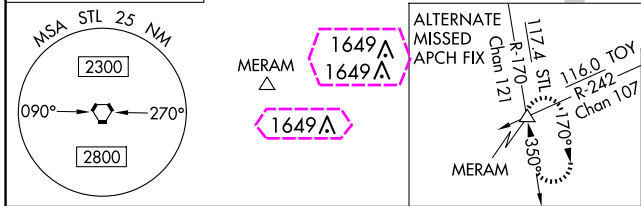
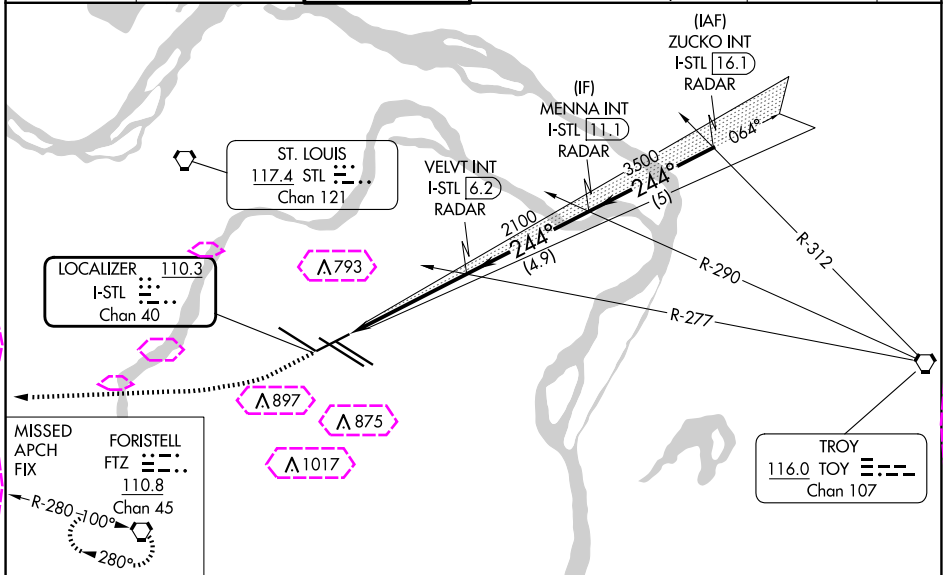
25107

LOC/DME I-STL 110.3 Chan 40	APP CRS 244°	Rwy Idg TDZE Apt Elev 7603 534 618
--	------------------------	--

ILS or LOC RWY 24

ST LOUIS LAMBERT INTL (STL)

RADAR required for procedure entry.				MALS (A ₄)	MISSED APPROACH: Climb to 3000 then right turn direct FTZ VORTAC and hold.
Inop table does not apply to S-ILS 24. For inop ALS, increase S-LOC 24 Cat E visibility to 1½ SM.					
D-ATIS 125.025 379.925	ST. LOUIS APP CON 132.125 360.6	ST. LOUIS TOWER 120.05 284.6	GND CON 121.9 348.6 (Inbound) 121.65 377.175 (Outbound) 118.925 227.125 (Rwy 11/29)	CLNC DEL 119.5 363.1	CPDLC



3000	FTZ
*LOC only	*I-STL 1.4
I-STL 3	2100
3500	244°
5000	GS 3.00°
TCH 54	1.5
3.2 NM	4.9 NM
5 NM	CATEGORY
A	B
C	D
E	
S-ILS 24	734/40 200 (200-¾)
S-LOC 24	1080/40 546 (500-¾)
	1080-1¾ 546 (500-1¾)

ST. LOUIS, MISSOURI
Amdt 47 26MAR20

38°45'N-90°22'W

ST LOUIS LAMBERT INTL (STL)
ILS or LOC RWY 24

NC-3, 10 JUL 2025 to 07 AUG 2025

NC-3, 10 JUL 2025 to 07 AUG 2025

ST. LOUIS, MISSOURI

AL-360 (FAA)

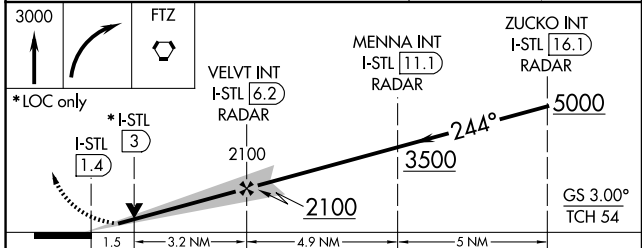
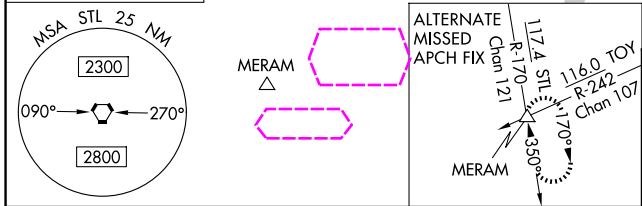
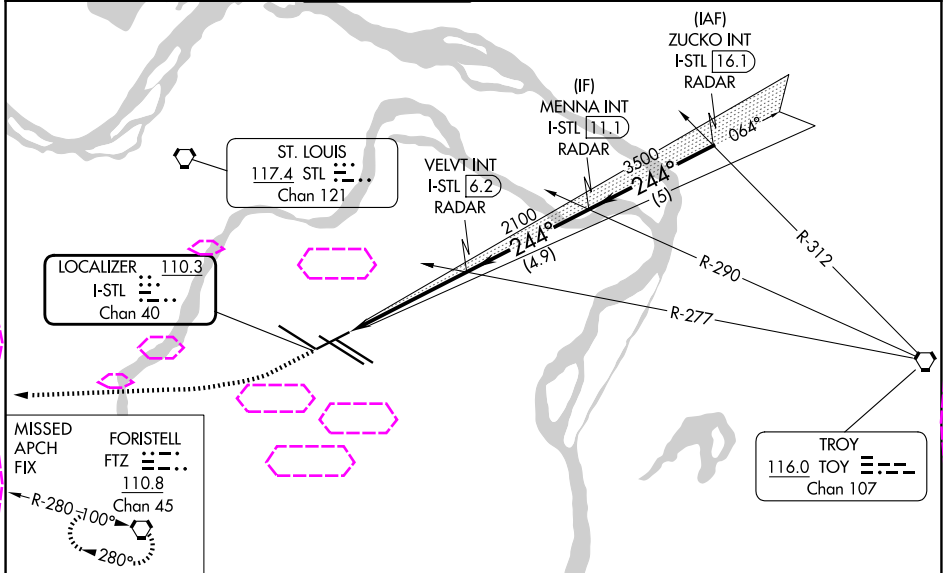
25219

LOC/DME I-STL 110.3 Chan 40	APP CRS 244°	Rwy Ldg TDZE Apt Elev 7603 534 618
--	------------------------	--

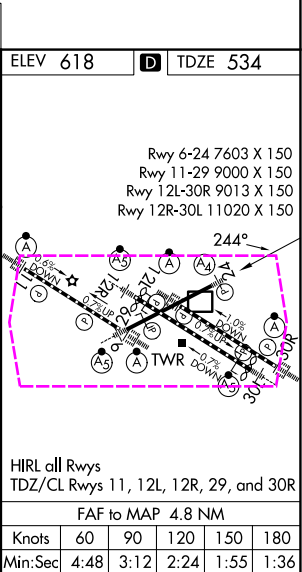
ILS or LOC RWY 24

ST LOUIS LAMBERT INTL (STL)

RADAR required for procedure entry. ▼ Inop table does not apply to S-ILS 24. For inop ALS, increase S-LOC 24 Cat E visibility to 1½ SM.				MALS (A ₄) =	MISSED APPROACH: Climb to 3000 then right turn direct FTZ VORTAC and hold.
D-ATIS 125.025 379.925	ST. LOUIS APP CON 132.125 360.6	ST. LOUIS TOWER 120.05 284.6	GND CON 121.9 348.6 (Inbound) 121.65 377.175 (Outbound) 118.925 227.125 (Rwy 11/29)	CLNC DEL 119.5 363.1	CPDLC



CATEGORY	A	B	C	D	E
S-ILS 24	734/40 200 (200-¾)				
S-LOC 24	1080/40	546 (500-¾)	1080-1⅜	546 (500-1⅜)	



ST. LOUIS, MISSOURI
Amdt 47 26MAR20

38°45'N-90°22'W

ST LOUIS LAMBERT INTL (STL)
ILS or LOC RWY 24

NC-3, 07 AUG 2025 to 04 SEP 2025

NC-3, 07 AUG 2025 to 04 SEP 2025