

ST LOUIS, MISSOURI


AL-360 (FAA)

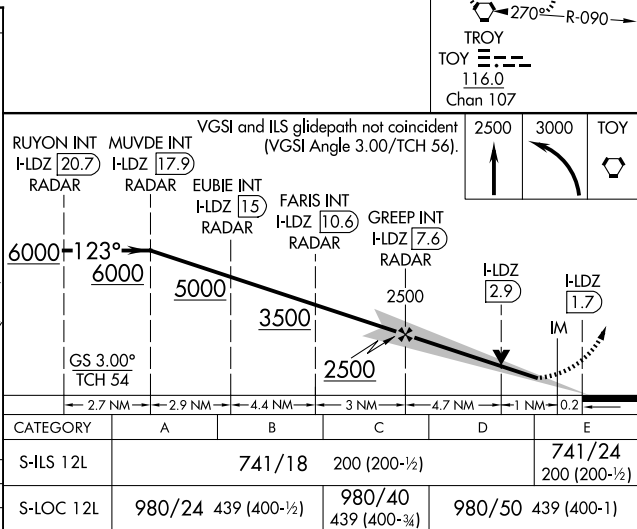
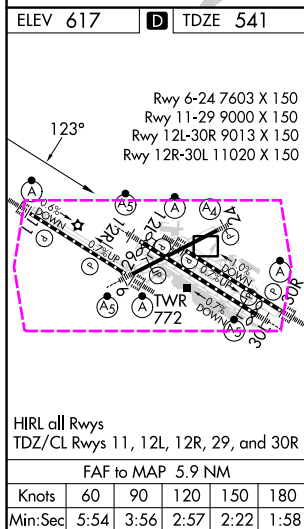
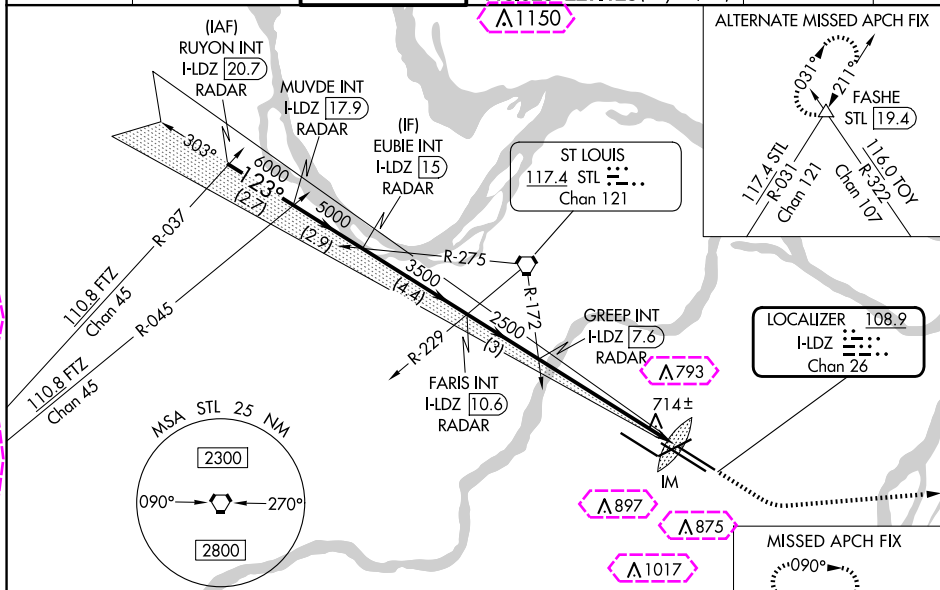
25107

LOC/DME I-LDZ 108.9 Chan 26	APP CRS 123°	Rwy Idg TDZE 541 Apt Elev 617
---	------------------------	---

ILS or LOC RWY 12L

ST LOUIS LAMBERT INTL (STL)

RADAR and DME required.			ALSIF-2 	MISSED APPROACH: Climb to 2500 then climbing left turn to 3000 direct TOY VORTAC and hold.
▼ For inop ALS, increase S-ILS 12L Cat E visibility to RVR 4000 and S-LOC 12L Cat E visibility to 1½ SM. Simultaneous approach authorized with Rwy 11. Simultaneous approach authorized with Rwy 12R requires use of vertical guidance; maintain last altitude until established on the glideslope.				
D-ATIS 125.025 379.925	ST. LOUIS APP CON 132.125 360.6	ST. LOUIS TOWER 120.05 284.6	GND CON 121.9 348.6 (Inbound) 121.65 377.175 (Outbound) 118.925 227.125 (Rwy 11/29)	CLNC DEL 119.5 363.1 CPDLC



ST LOUIS, MISSOURI
Amdt 6D 17APR25

38°45'N-90°22'W

ST LOUIS LAMBERT INTL (STL) ILS or LOC RWY 12L

NC-3, 10 JUL 2025 to 07 AUG 2025

ST LOUIS, MISSOURI

AL-360 (FAA)

25219

LOC/DME I-LDZ 108.9 Chan 26	APP CRS 123°	Rwy Ldg TDZE 541 Apt Elev 617
---	------------------------	---

ILS or LOC RWY 12L

ST LOUIS LAMBERT INTL (STL)

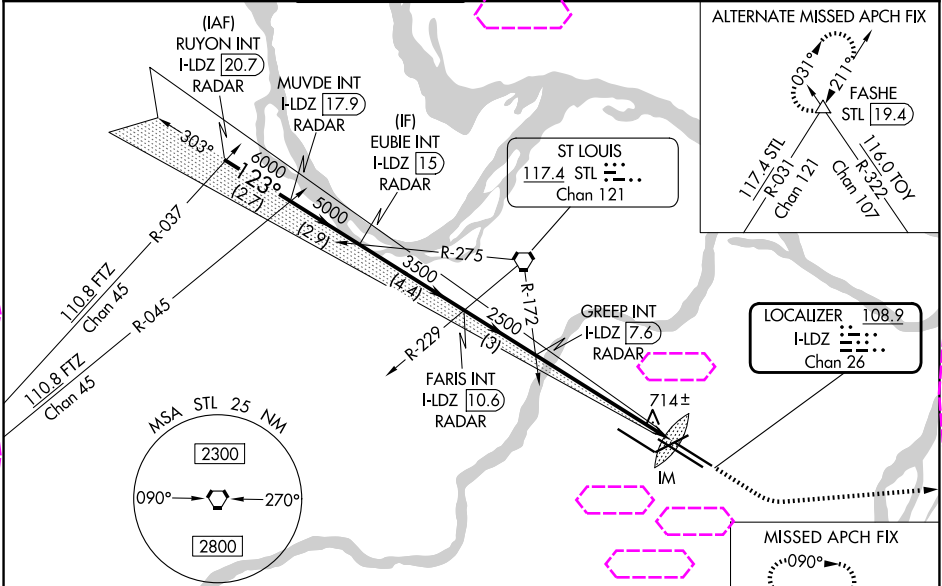
RADAR and DME required.

For inop ALS, increase S-ILS 12L Cat E visibility to RVR 4000 and S-LOC 12L Cat E visibility to 1½ SM. Simultaneous approach authorized with Rwy 11. Simultaneous approach authorized with Rwy 12R requires use of vertical guidance; maintain last altitude until established on the glideslope.

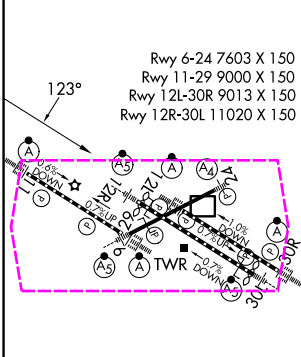
ALSF-2

MISSED APPROACH: Climb to 2500 then climbing left turn to 3000 direct TOY VORTAC and hold.

D-ATIS 125.025 379.925	ST. LOUIS APP CON 132.125 360.6	ST. LOUIS TOWER 120.05 284.6	GND CON 121.9 348.6 (Inbound) 121.65 377.175 (Outbound) 118.925 227.125 (Rwy 11/29)	CLNC DEL 119.5 363.1	CPDLC
--	---	--	---	--------------------------------	-------



ELEV 617	D TDZE 541
----------	------------



HIRL all Rws TDZ/CL Rws 11, 12L, 12R, 29, and 30R	FAF to MAP 5.9 NM	CATEGORY	A	B	C	D	E
Knots Min:Sec	60 5:54	90 3:56	120 2:57	150 2:22	180 1:58		
S-ILS 12L		741/18	200 (200-½)				741/24 200 (200-½)
S-LOC 12L		980/24 439 (400-½)	980/40 439 (400-¾)	980/50 439 (400-1)			

ST LOUIS, MISSOURI
Amdt 6D 17APR25

38°45'N-90°22'W

ST LOUIS LAMBERT INTL (STL)
ILS or LOC RWY 12L