



ST. LOUIS, MISSOURI

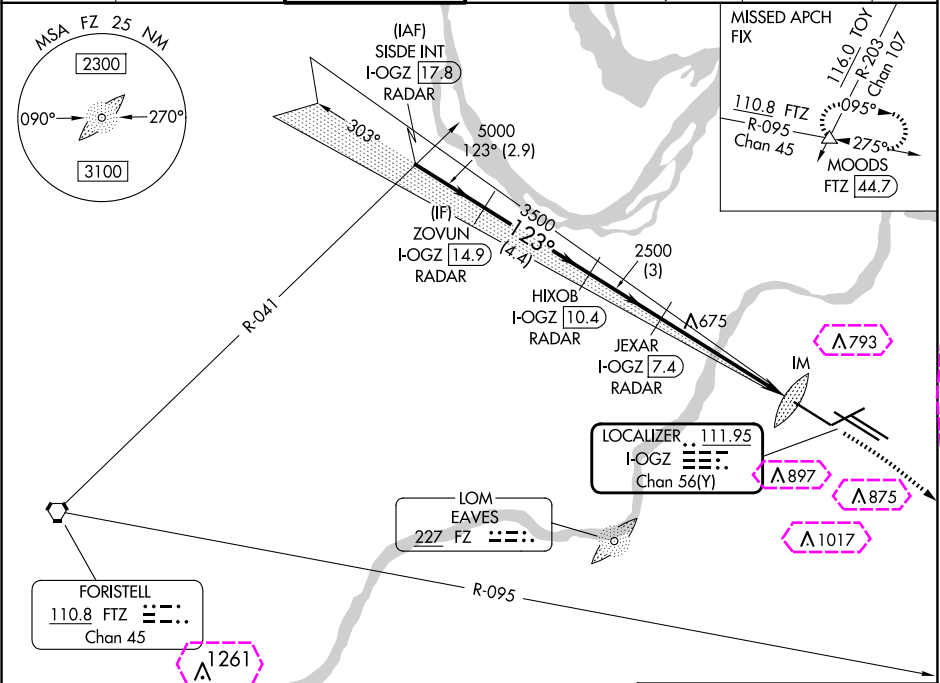
AL-360 (FAA)

25107

LOC/DME I-OGZ <b>111.95</b> Chan <b>56(Y)</b>	APP CRS <b>123°</b>	Rwy Idg <b>9000</b> TDZE <b>618</b> Apt Elev <b>618</b>
---	------------------------	---

ILS or LOC RWY 11  
ST LOUIS LAMBERT INTL (STL)

RADAR required for procedure entry. DME or RADAR required.			ALSIF-2 	MISSED APPROACH: Climb to 1060 then climbing right turn to 3000 on heading 130° and FTZ R-095 to MOODS INT/FTZ 44.7 DME and hold.		
 Simultaneous approach authorized with Rwy 12R/L. Disregard OM signal associated with ILS to Rwy 12R. For inop ALS, increase S-ILS Cat E visibility to RVR 4000, and S-LOC Cat C/D/E visibility to RVR 5500.						
D-ATIS <b>125.025</b> <b>379.925</b>	ST. LOUIS APP CON <b>132.125 360.6</b>	ST. LOUIS TOWER <b>132.475 239.275</b>	GND CON <b>121.9 348.6</b> (Inbound) <b>121.65 377.175</b> (Outbound) <b>118.925 227.125</b> (Rwy 11/29)			CLNC DEL <b>119.5 363.1</b>  CPDLC



VGSI and ILS glidepath not coincident (VGSI Angle 3.00/TCH 67).		1060	3000	FTZ	MOODS
SISDE INT I-OGZ 17.8		ZOVUN I-OGZ 14.9	HIXOB I-OGZ 10.4	JEXAR I-OGZ 7.4	*LOC only
5000		5000	3500	2500	
GS 3.00° TCH 55					
2.9 NM		4.4 NM	3 NM	4.6 NM	0.9 NM 0.1
CATEGORY	A	B	C	D	E
S-ILS 11	818/18 200 (200-½)				
S-LOC 11	980/24 362 (400-½)		980/35 362 (400-¾)		

ELEV 618	TDZE 618
Rwy 6-24 7603 X 150 Rwy 11-29 9000 X 150 Rwy 12L-30R 9013 X 150 Rwy 12R-30L 11020 X 150	
HIRL all Rwy's TDZ/CL Rwy's 11, 12L, 12R, 29, and 30R FAF to MAP 5.6 NM	
Knots	60 90 120 150 180
Min:Sec	5:36 3:44 2:48 2:14 1:52

ST. LOUIS, MISSOURI

Amtd 1 03JAN19

38°45'N-90°22'W

ST LOUIS LAMBERT INTL (STL)  
ILS or LOC RWY 11

NC-3, 07 AUG 2025 to 04 SEP 2025