

ST. LOUIS, MISSOURI

AL-360 (FAA)

25107

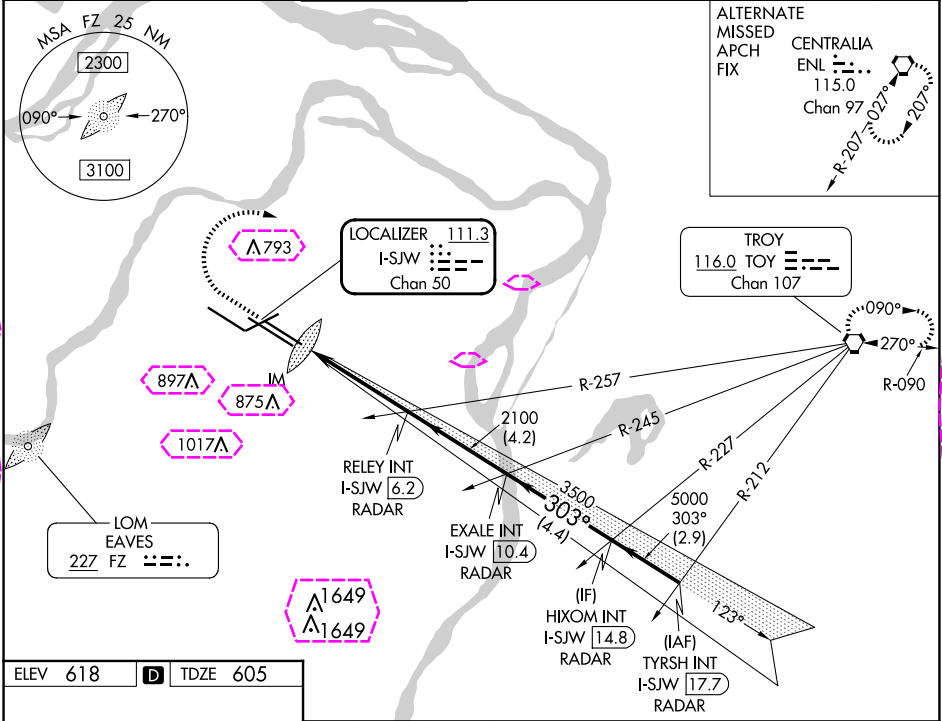
LOC/DME I-SJW <b>111.3</b> Chan <b>50</b>	APP CRS <b>303°</b>	Rwy Idg TDZE <b>605</b> Apt Elev <b>618</b>	<b>9013</b>
---	------------------------	---	-------------

# ILS RWY 30R (CAT II & III)

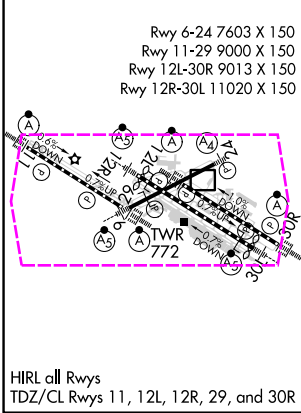
ST LOUIS LAMBERT INTL (STL)

RADAR required for procedure entry.	ALSIF-2	MISSED APPROACH: Climb to 1020 then climbing right turn to 3000 direct TOY VORTAC and hold.
Simultaneous approach authorized with Rwy 29.		

D-ATIS <b>125.025</b> <b>379.925</b>	ST. LOUIS APP CON <b>132.125 360.6</b>	ST. LOUIS TOWER <b>120.05 284.6</b>	GND CON <b>121.9 348.6</b> (Inbound) <b>121.65 377.175</b> (Outbound) <b>118.925 227.125</b> (Rwy 11/29)	CLNC DEL <b>119.5 363.1</b>	CPDLC
--	---	--	---	--------------------------------	-------



ELEV 618	D	TDZE 605
----------	---	----------



1020	3000	TOY	RELEAY INT I-SJW 6.2 RADAR	EXALE INT I-SJW 10.4 RADAR	HIXOM INT I-SJW 14.8 RADAR	TYRSH INT I-SJW 17.7 RADAR
			IM 705	2100	3500	5000
1200'	4.5 NM	4.2 NM	4.4 NM	2.9 NM		
CATEGORY	A	B	C	D		
S-ILS 30R	CAT II RA 116/12 100 DA 705					
S-ILS 30R	CAT III RVR 06					

## CATEGORY II & III ILS - SPECIAL AIRCREW & AIRCRAFT CERTIFICATION REQUIRED

ST. LOUIS, MISSOURI  
Amdt 12 03JAN19

38°45'N-90°22'W

ST LOUIS LAMBERT INTL (STL)  
ILS RWY 30R (CAT II & III)

NC-3, 10 JUL 2025 to 07 AUG 2025

NC-3, 10 JUL 2025 to 07 AUG 2025

ST. LOUIS, MISSOURI

AL-360 (FAA)

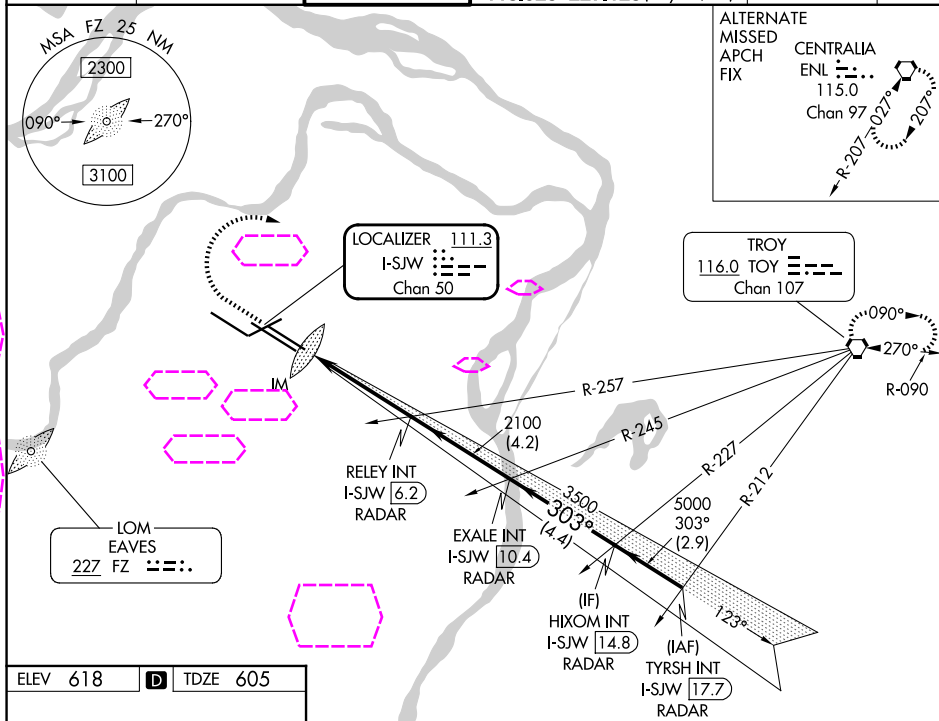
25219

LOC/DME I-SJW <b>111.3</b> Chan <b>50</b>	APP CRS <b>303°</b>	Rwy Ldg TDZE Apt Elev <b>9013</b> <b>605</b> <b>618</b>
---	------------------------	--

# ILS RWY 30R (CAT II & III)

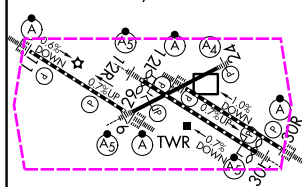
## ST LOUIS LAMBERT INTL (STL)

RADAR required for procedure entry.		ALS-F-2 	MISSED APPROACH: Climb to 1020 then climbing right turn to 3000 direct TOY VORTAC and hold.	
Simultaneous approach authorized with Rwy 29.				
D-ATIS <b>125.025</b> <b>379.925</b>	ST. LOUIS APP CON <b>132.125 360.6</b>	ST. LOUIS TOWER <b>120.05 284.6</b>	GND CON <b>121.9 348.6</b> (Inbound) <b>121.65 377.175</b> (Outbound) <b>118.925 227.125</b> (Rwy 11/29)	CLNC DEL <b>119.5 363.1</b>
				CPDLC



ELEV 618 **D** TDZE 605

Rwy 6-24 7603 X 150  
Rwy 11-29 9000 X 150  
Rwy 12L-30R 9013 X 150  
Rwy 12R-30L 11020 X 150



HIRL all Rwys

TDZ/CL Rwys 11, 12L, 12R, 29, and 30R

ST. LOUIS, MISSOURI






Amdt 12 03JAN19

38°45'N-90°22'W

ST LOUIS LAMBERT INTL (STL)

ILS RWY 30R (CAT II &amp; III)

### CATEGORY II & III ILS - SPECIAL AIRCREW & AIRCRAFT CERTIFICATION REQUIRED

1020	3000	TOY				
						
			RELEY INT I-SJW 6.2 RADAR	EXALE INT I-SJW 10.4 RADAR	HIXOM INT I-SJW 14.8 RADAR	TYRSH INT I-SJW 17.7 RADAR
			2100	3500	5000	5000
				2100	303°	GS 3.00° TCH 57
			4.5 NM	4.2 NM	4.4 NM	2.9 NM
CATEGORY	A		B		C	D
S-ILS 30R	CAT II RA 116/12 100 DA 705					
S-ILS 30R	CAT III RVR 06					

NC-3, 07 AUG 2025 to 04 SEP 2025

NC-3, 07 AUG 2025 to 04 SEP 2025