

ST. LOUIS, MISSOURI

AL-360 (FAA)

25107

LOC/DME I-OGZ 111.95 Chan 56(Y)	APP CRS 123°	Rwy Idg 9000 TDZE 618 Apt Elev 618
---	------------------------	---

ILS RWY 11 (CAT II & III)

ST LOUIS LAMBERT INTL (STL)

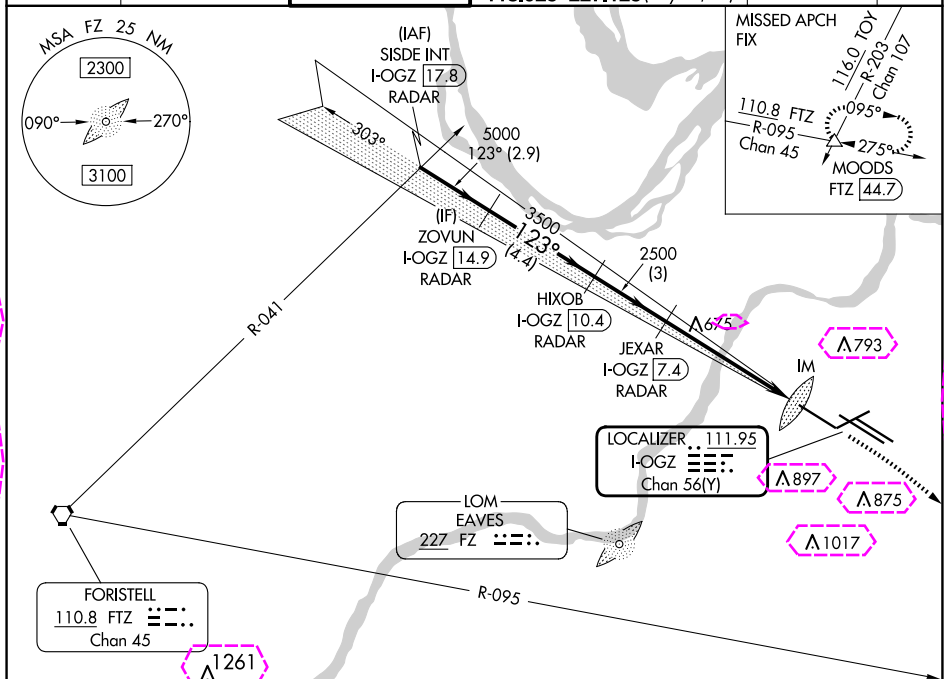
RADAR required for procedure entry. DME or RADAR required.

Simultaneous approach authorized with Rwy 12R/L.
Disregard OM signal associated with ILS to Rwy 12R.

ALSF-2

MISSED APPROACH: Climb to 1060 then climbing right turn to 3000 on heading 130° and FTZ R-095 to MOODS INT/FTZ 44.7 DME and hold.

D-ATIS 125.025 379.925	ST. LOUIS APP CON 132.125 360.6	ST. LOUIS TOWER 132.475 239.275	GND CON 121.9 348.6 (Inbound) 121.65 377.175 (Outbound) 118.925 227.125 (Rwy 11/29)	CLNC DEL 119.5 363.1	CPDLC
--	---	---	---	--------------------------------	-------



VGSI and ILS glidepath not coincident (VGSI Angle 3.00/TCH 67).

1060 3000 FTZ R-095 MOODS

SISDE INT I-OGZ 17.8 RADAR
ZOVUN I-OGZ 14.9 RADAR
HIXOB I-OGZ 10.4 RADAR
JEXAR I-OGZ 7.4 RADAR

5000 123° 5000 3500 2500 719 IM

GS 3.00° TCH 55

2.9 NM 4.4 NM 3 NM 5.6 NM 1209'

CATEGORY	A	B	C	D
S-ILS 11	CAT II RA 187/12 100 DA 718			
S-ILS 11	CAT III RVR 06			

CATEGORY II & III ILS - SPECIAL AIRCREW & AIRCRAFT CERTIFICATION REQUIRED

HIRL all Rwys
TDZ/CL Rwys 11, 12L, 12R, 29, and 30R

ST. LOUIS, MISSOURI

Amtd 1 03JAN19

38°45'N-90°22'W

ST LOUIS LAMBERT INTL (STL)
ILS RWY 11 (CAT II & III)

NC-3, 10 JUL 2025 to 07 AUG 2025

NC-3, 10 JUL 2025 to 07 AUG 2025

ST. LOUIS, MISSOURI

AL-360 (FAA)

25219

LOC/DME I-OGZ 111.95 Chan 56(Y)	APP CRS 123°	Rwy Ldg TDZE 618 Apt Elev 618
---	------------------------	---

ILS RWY 11 (CAT II & III)

ST LOUIS LAMBERT INTL (STL)

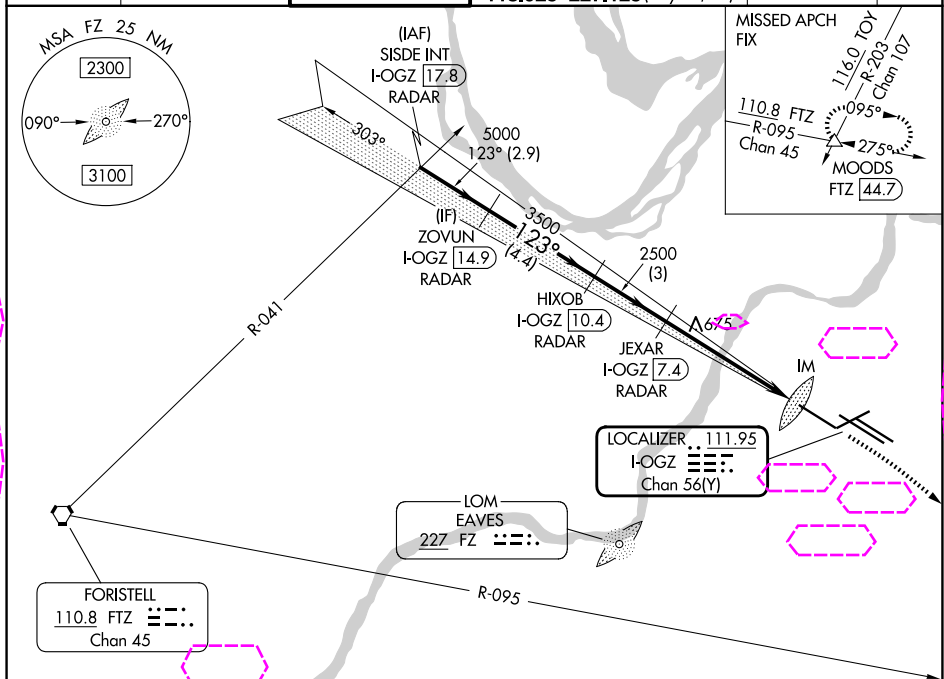
RADAR required for procedure entry. DME or RADAR required.

Simultaneous approach authorized with Rwy 12R/L.
Disregard OM signal associated with ILS to Rwy 12R.



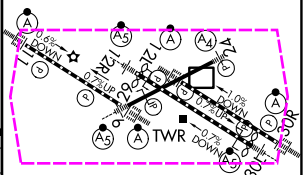
MISSED APPROACH: Climb to 1060 then climbing right turn to 3000 on heading 130° and FTZ R-095 to MOODS INT/FTZ 44.7 DME and hold.

D-ATIS 125.025 379.925	ST. LOUIS APP CON 132.125 360.6	ST. LOUIS TOWER 132.475 239.275	GND CON 121.9 348.6 (Inbound) 121.65 377.175 (Outbound) 118.925 227.125 (Rwy 11/29)	CLNC DEL 119.5 363.1	CPDLC
--	---	---	---	--------------------------------	-------



VGSi and ILS glidepath not coincident (VGSi Angle 3.00/TCH 67).					1060	3000	FTZ	MOODS
					↑	hdg 130°	R-095	△
SISDE INT I-OGZ 17.8 RADAR	ZOVUN I-OGZ 14.9 RADAR	HIXOB I-OGZ 10.4 RADAR	JEXAR I-OGZ 7.4 RADAR		5000	5000	3500	2500
GS 3.00° TCH 55					2.9 NM	4.4 NM	3 NM	5.6 NM
CATEGORY	A	B	C	D	120°			
S-ILS 11	CAT II RA 187/12 100 DA 718							
S-ILS 11	CAT III RVR 06							

ELEV 618	TDZE 618
Rwy 6-24 7603 X 150	
Rwy 11-29 9000 X 150	
Rwy 12L-30R 9013 X 150	
Rwy 12R-30L 11020 X 150	



CATEGORY II & III ILS - SPECIAL AIRCREW & AIRCRAFT CERTIFICATION REQUIRED

ST. LOUIS, MISSOURI
Amdt 1 03JAN19

38°45'N-90°22'W

ST LOUIS LAMBERT INTL (STL)
ILS RWY 11 (CAT II & III)

HIRL all Rwys
TDZ/CL Rwys 11, 12L, 12R, 29, and 30R

NC-3, 07 AUG 2025 to 04 SEP 2025

NC-3, 07 AUG 2025 to 04 SEP 2025