

SACRAMENTO EXEC (SAC)
VOR RWY 2

25219

VORTAC SAC 115.2 Chan 99	APP CRS 016°	Rwy Ldg 5503 TDZE 21 App Elev 24
--	------------------------	---

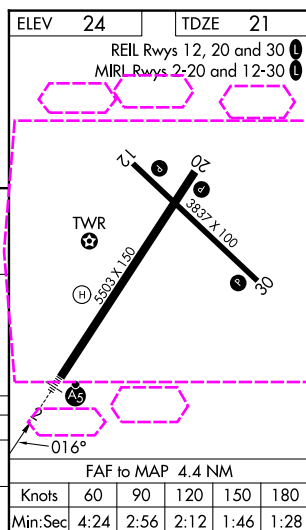
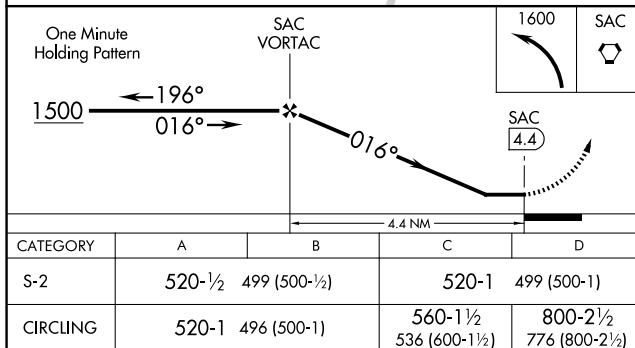
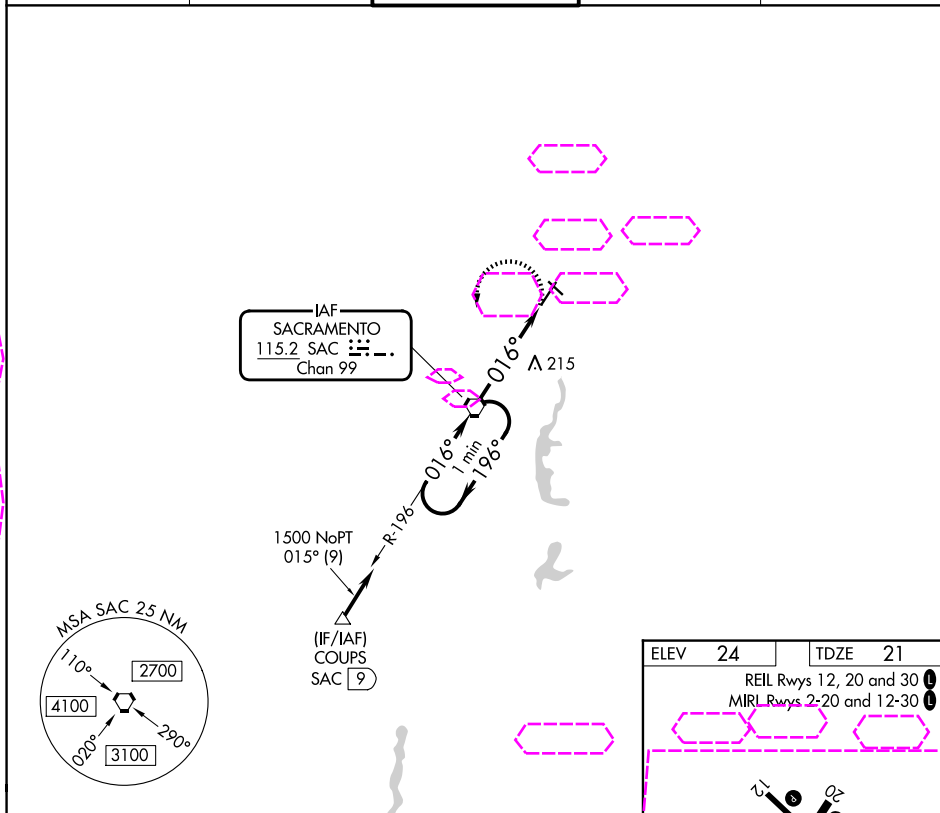
VOR RWY 2
SACRAMENTO EXEC (SAC)

T When local altimeter setting not received, use Sacramento Intl
A altimeter setting and increase all MDAs 40 feet and Circling
Cat D visibility $\frac{1}{4}$ SM.



MISSED APPROACH: Climbing left turn to 1600 direct SAC VORTAC and hold.

ATIS 118.075	NORCAL APP CON 125.25 257.9	EXEC TOWER★ 119.5 (CTAF) 0 278.8	GND CON 125.0	UNICOM 122.95
------------------------	---------------------------------------	--	-------------------------	-------------------------



SACRAMENTO, CALIFORNIA
Amdt 10F 22APR21

38°31'N-121°30'W

SACRAMENTO EXEC (SAC)
VOR RWY 2

SW-2, 07 AUG 2025 to 04 SEP 2025

SW-2, 07 AUG 2025 to 04 SEP 2025