

| | | |
|---------------------------|------------------------|---|
| LOC I-SAC 110.3 | APP CRS 019° | Rwy Idg 5503 TDZE 21 Apt Elev 24 |
|---------------------------|------------------------|---|

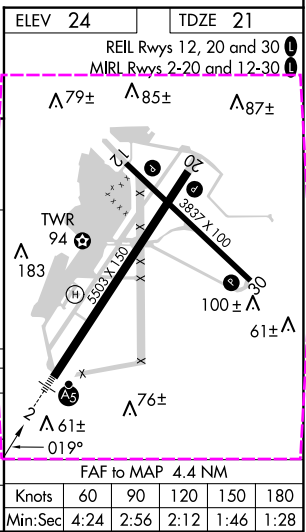
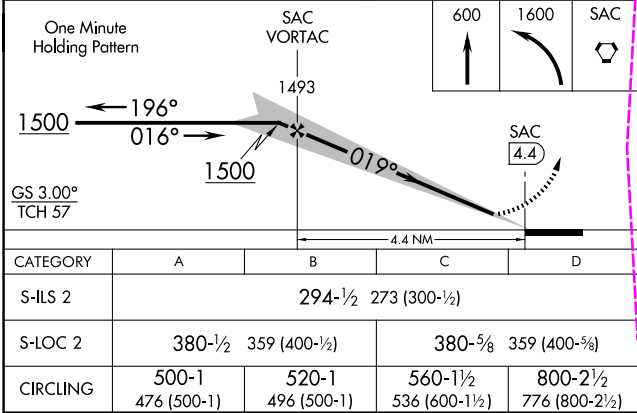
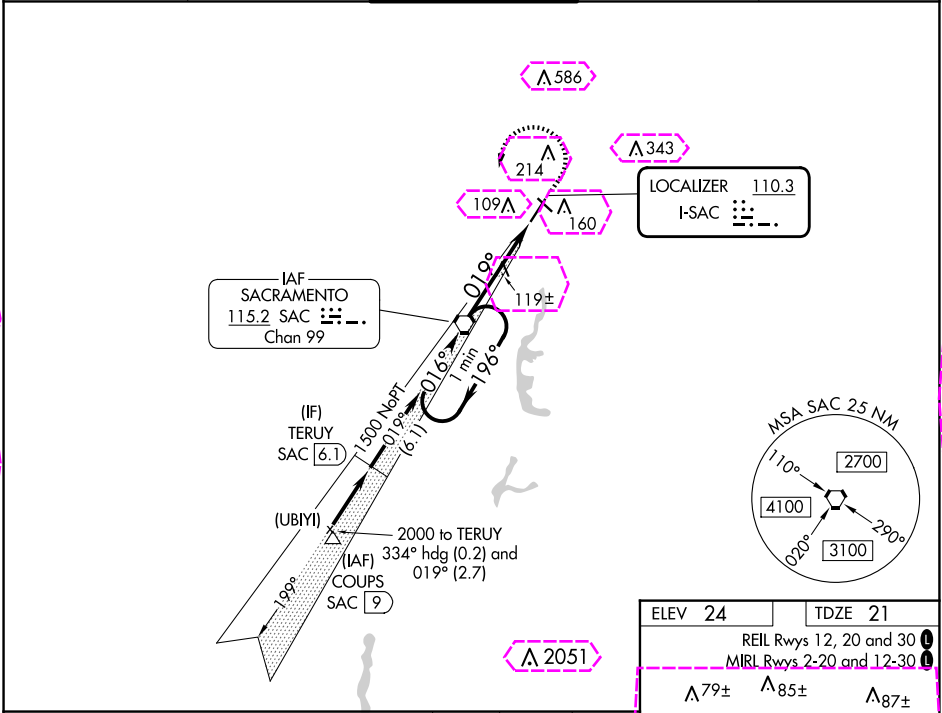
ILS or LOC RWY 2
SACRAMENTO EXEC (SAC)

When local altimeter setting not received, use Sacramento Intl altimeter setting and increase DA to 322 feet, increase all MDAs 40 feet and Circling Cat D visibility 1/4 SM. Autopilot coupled approach NA below 335 feet. For inop MALSr, increase S-ILS 2 all Cats visibility to 3/8 SM and S-LOC 2 Cat C/D visibility to 1 SM. For inop MALSr when using Sacramento Intl altimeter setting, increase S-ILS 2 all Cats visibility to 3/8 SM.

MALSr

MISSED APPROACH:
Climb to 600 then climbing left turn to 1600 direct SAC VORTAC and hold.

| | | | | |
|----------------------|---------------------------------------|---|-------------------------|-------------------------|
| ATIS 125.5 | NORCAL APP CON 125.25 257.9 | EXEC TOWER ★ 119.5 (CTAF) 278.8 | GND CON 125.0 | UNICOM 122.95 |
|----------------------|---------------------------------------|---|-------------------------|-------------------------|



SW-2, 10 JUL 2025 to 07 AUG 2025

SW-2, 10 JUL 2025 to 07 AUG 2025

SACRAMENTO, CALIFORNIA

AL-358 (FAA)

25219


| | | | |
|---------------------------|------------------------|-----------------------------|---------------------------------------|
| LOC I-SAC 110.3 | APP CRS 019° | Rwy Ldg TDZE Apt Elev | 5503 21 24 |
|---------------------------|------------------------|-----------------------------|---------------------------------------|

ILS or LOC RWY 2

SACRAMENTO EXEC (SAC)

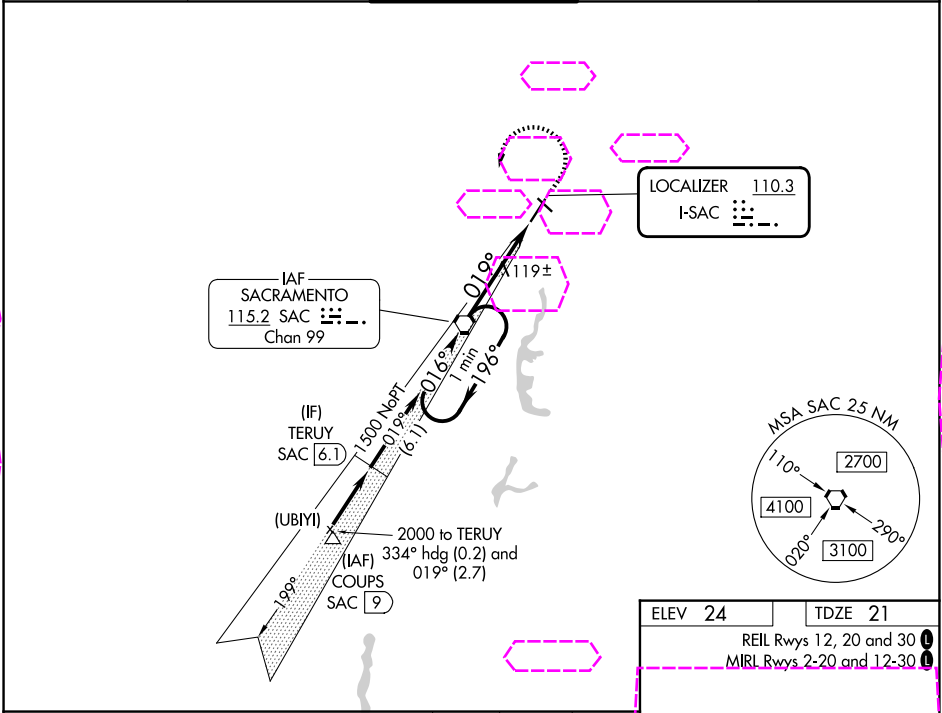
⚠ When local altimeter setting not received, use Sacramento Intl altimeter setting and increase DA to 322 feet, increase all MDAs 40 feet and Circling Cat D visibility ¼ SM. Autopilot coupled approach NA below 335 feet. For inop MALS/R, increase S-ILS 2 all Cats visibility to ¾ SM and S-LOC 2 Cat C/D visibility to 1 SM. For inop MALS/R when using Sacramento Intl altimeter setting, increase S-ILS 2 all Cats visibility to ¾ SM.

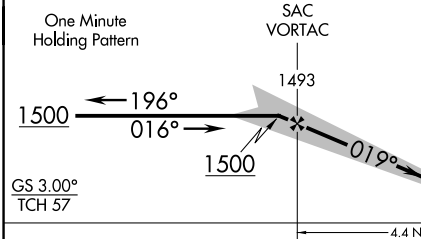
MALS/R

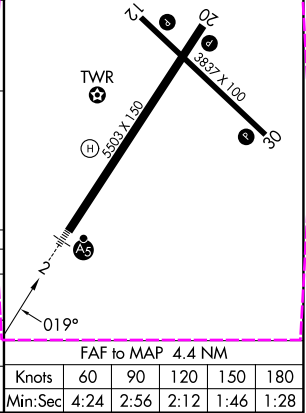


MISSED APPROACH:
Climb to 600 then climbing left turn to 1600 direct SAC VORTAC and hold.

| | | | | |
|------------------------|---------------------------------------|--|-------------------------|-------------------------|
| ATIS 118.075 | NORCAL APP CON 125.25 257.9 | EXEC TOWER★ 119.5 (CTAF) 0 278.8 | GND CON 125.0 | UNICOM 122.95 |
|------------------------|---------------------------------------|--|-------------------------|-------------------------|



| | | | | |
|--|----------------------|----------------------|------------------------|------------------------|
| One Minute Holding Pattern | | | | |
|  | | | | |
| CATEGORY | A | B | C | D |
| S-ILS 2 | 294-½ 273 (300-½) | | | |
| S-LOC 2 | 380-½ | 359 (400-½) | 380-⅝ | 359 (400-⅝) |
| CIRCLING | 500-1 476 (500-1) | 520-1 496 (500-1) | 560-1½ 536 (600-1½) | 800-2½ 776 (800-2½) |



SACRAMENTO, CALIFORNIA
Amdt 24F 22APR21

38°31'N-121°30'W

SACRAMENTO EXEC (SAC)
ILS or LOC RWY 2

SW-2, 07 AUG 2025 to 04 SEP 2025

SW-2, 07 AUG 2025 to 04 SEP 2025