

ROSWELL, NEW MEXICO

AL-354 (FAA)

24249

|  |                        |  |
|--|------------------------|--|
| WAAS<br>CH <b>50202</b><br><b>W03A</b> | APP CRS<br><b>035°</b> | Rwy Idg <b>13000</b><br>TDZE <b>3667</b><br>Apt Elev <b>3671</b> |
|--|------------------------|--|

# RNAV (GPS) RWY 3

ROSWELL AIR CENTER (ROW)

RNP APCH - GPS.

▼

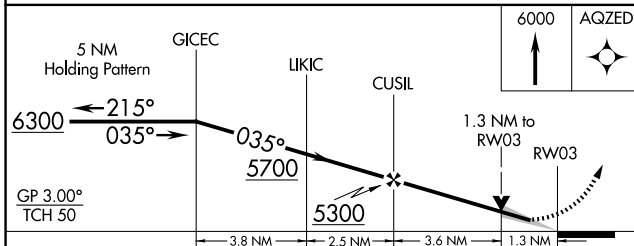
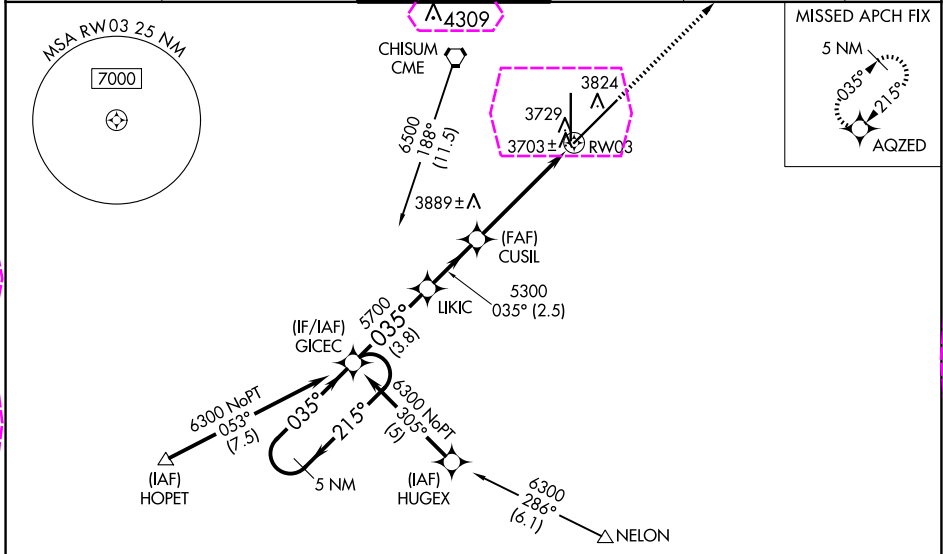
▲

ASR

For uncompensated Baro-VNAV systems, LNAV/VNAV NA below -22°C or above 41°C. When local altimeter setting not received, Use Artesia altimeter setting; increase LPV DA to 3997 feet and all visibilities ¼ SM; increase LNAV/VNAV DA to 4067 feet and all visibilities ½ SM; increase all MDAs 80 feet and LNAV visibility Cat C ⅜ SM, Cat D ⅝ SM and Circling visibility Cat D ¼ SM. Baro-VNAV and VDP NA when using Artesia altimeter setting.

MISSED APPROACH: Climb to 6000 direct AQZED and hold.

|                             |   |  |                               |                                   |                         |
|-----------------------------|---|--|-------------------------------|-----------------------------------|-------------------------|
| ATIS<br><b>128.45 306.2</b> | ROSWELL APP CON ★<br><b>119.6 239.0</b> | ROSWELL TOWER ★<br><b>118.5 (CTAF) 0 233.7</b> | GND CON<br><b>121.9 348.6</b> | CLNC DEL<br><b>132.875 282.25</b> | UNICOM<br><b>122.95</b> |
|-----------------------------|---|--|-------------------------------|-----------------------------------|-------------------------|



| CATEGORY     | A                  | B                    | C                    | D |
|--------------|--------------------|----------------------|----------------------|---|
| LPV DA       | 3917-¾ 250 (300-¾) |                      |                      |   |
| LNAV/VNAV DA | 3987-1 320 (400-1) |                      |                      |   |
| LNAV MDA     | 4140-1 473 (500-1) | 4140-1¼ 473 (500-1¼) | 4140-1½ 473 (500-1½) |   |
| CIRCLING     | 4140-1 469 (500-1) | 4140-1½ 469 (500-1½) | 4300-2 629 (700-2)   |   |

ELEV 3671 TDZE 3667

MIRL Rwy 3-21  
MIRL Rwy 17-35

ROSWELL, NEW MEXICO  
Orig-B 06OCT22

33°18'N-104°32'W

ROSWELL AIR CENTER (ROW)  
RNAV (GPS) RWY 3

SW-1, 10 JUL 2025 to 07 AUG 2025

SW-1, 10 JUL 2025 to 07 AUG 2025

ROSWELL, NEW MEXICO

AL-354 (FAA)

25219

|  |                        |   |
|--|------------------------|---|
| WAAS<br>CH <b>50202</b><br><b>W03A</b> | APP CRS<br><b>035°</b> | Rwy Ldg<br><b>13000</b><br>TDZE<br><b>3667</b><br>Apt Elev<br><b>3671</b> |
|--|------------------------|---|

# RNAV (GPS) RWY 3

ROSWELL AIR CENTER (ROW)

RNP APCH - GPS.

▼

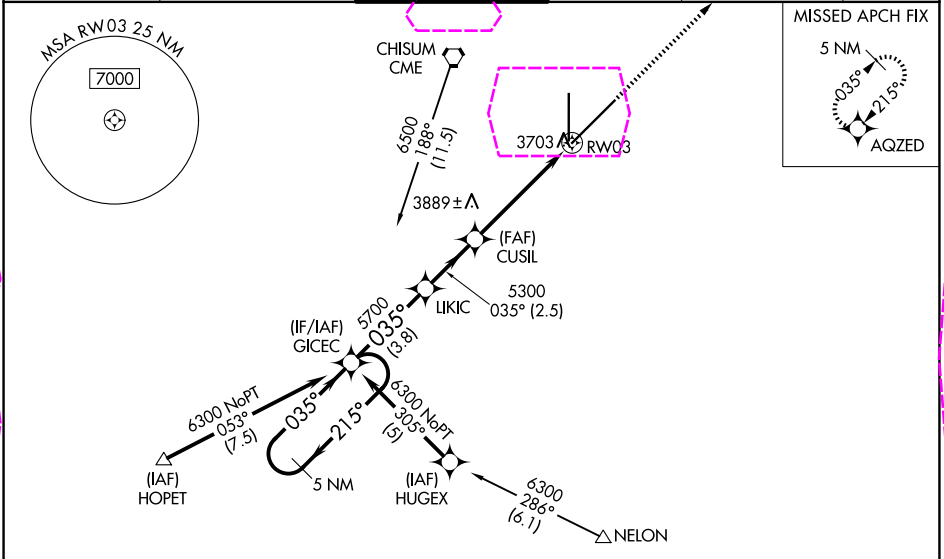
▲

ASR

For uncompensated Baro-VNAV systems, LNAV/VNAV NA below -22°C or above 41°C. When local altimeter setting not received, Use Artesia altimeter setting; increase LPV DA to 3997 feet and all visibilities ¼ SM; increase LNAV/VNAV DA to 4067 feet and all visibilities ½ SM; increase all MDAs 80 feet and LNAV visibility Cat C ¾ SM, Cat D ½ SM and Circling visibility Cat D ¼ SM. Baro-VNAV and VDP NA when using Artesia altimeter setting.

MISSED APPROACH: Climb to 6000 direct AQZED and hold.

|                             |   |  |                               |                                   |                         |
|-----------------------------|---|--|-------------------------------|-----------------------------------|-------------------------|
| ATIS<br><b>128.45 306.2</b> | ROSWELL APP CON ★<br><b>119.6 239.0</b> | ROSWELL TOWER ★<br><b>118.5 (CTAF) 0 233.7</b> | GND CON<br><b>121.9 348.6</b> | CLNC DEL<br><b>132.875 282.25</b> | UNICOM<br><b>122.95</b> |
|-----------------------------|---|--|-------------------------------|-----------------------------------|-------------------------|



|                      |                    |                      |                      |
|----------------------|--------------------|----------------------|----------------------|
| ELEV 3671            |                    | TDZE 3667            |                      |
| 5 NM Holding Pattern |                    | 6000 AQZED           |                      |
| GP 3.00° TCH 50      |                    | 1.3 NM to RW03       |                      |
| CATEGORY             | A                  | B                    | C                    |
| LPV DA               | 3917-¾ 250 (300-¾) |                      |                      |
| LNAV/VNAV DA         | 3987-1 320 (400-1) |                      |                      |
| LNAV MDA             | 4140-1 473 (500-1) | 4140-1¼ 473 (500-1¼) | 4140-1½ 473 (500-1½) |
| CIRCLING             | 4140-1 469 (500-1) | 4140-1½ 469 (500-1½) | 4300-2 629 (700-2)   |

ROSWELL, NEW MEXICO  
Orig-B 06OCT22

33°18'N-104°32'W

ROSWELL AIR CENTER (ROW)  
RNAV (GPS) RWY 3