

ROSWELL, NEW MEXICO

AL-354 (FAA)

24249

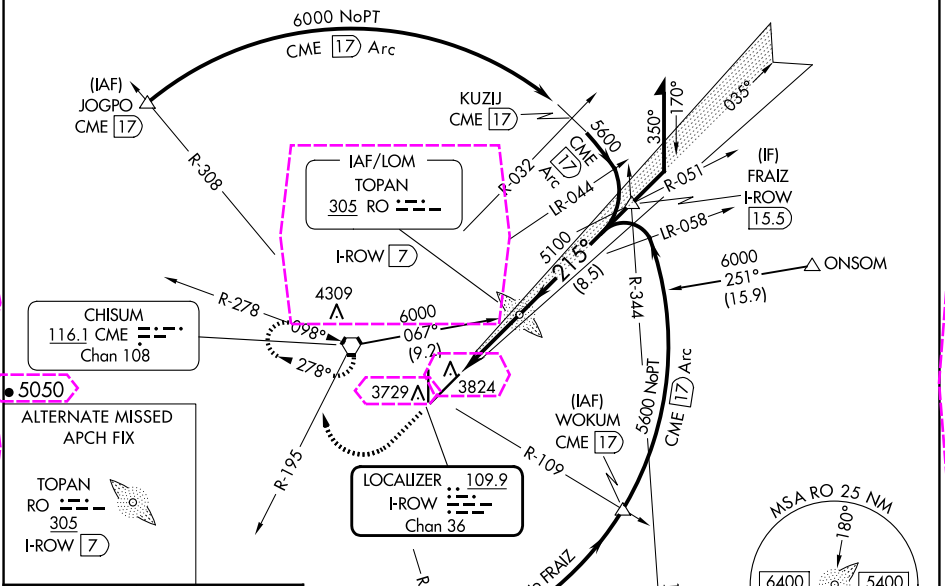
LOC/DME I-ROW 109.9 Chan 36	APP CRS 215°	Rwy Idg 13000 TDZE 3633 Apt Elev 3671
---	------------------------	--

ILS Z or LOC Z RWY 21

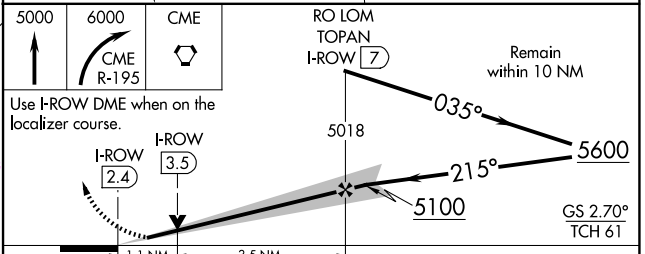
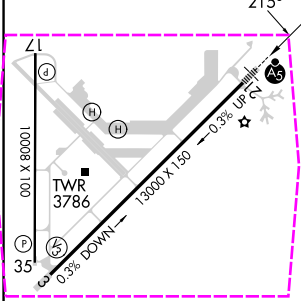
ROSWELL AIR CENTER (ROW)

ADF or DME required.	MALSR	MISSED APPROACH: Climb to 5000 then climbing right turn to 6000 on CME VORTAC R-195 to CME VORTAC and hold, continue climb-in-hold to 6000.
VDP NA when using Artesia altimeter setting. When local altimeter setting not received, use Artesia altimeter setting: increase DA to 3913 feet; increase all MDAs 80 feet and S-LOC 21 visibility Cat C/D ¾ SM and Circling visibility Cat D ¼ SM. For inop ALS when using Artesia altimeter setting, increase ILS all Cats visibility to ¾ SM and LOC Cats C/D to 1 ¾ SM.		

ATIS 128.45 306.2	ROSWELL APP CON* 119.6 239.0	ROSWELL TOWER* 118.5 (CTAF) 0 233.7	GND CON 121.9 348.6	CLNC DEL 132.875 282.25	UNICOM 122.95
-----------------------------	--	---	-------------------------------	-----------------------------------	-------------------------



ELEV 3671	D	TDZE 3633
-----------	---	-----------



CATEGORY	A	B	C	D
S-ILS 21	3833-½ 200 (200-½)			
S-LOC 21	4020-½ 387 (400-½)		4020-⅝ 387 (400-⅝)	
CIRCLING	4140-1 469 (500-1)		4140-1½ 469 (500-1½) 4300-2 629 (700-2)	

ROSWELL, NEW MEXICO

Amdt 18C 03NOV22

33°18'N-104°32'W

ILS Z or LOC Z RWY 21

SW-1, 10 JUL 2025 to 07 AUG 2025

SW-1, 10 JUL 2025 to 07 AUG 2025

ROSWELL, NEW MEXICO

AL-354 (FAA)

25219

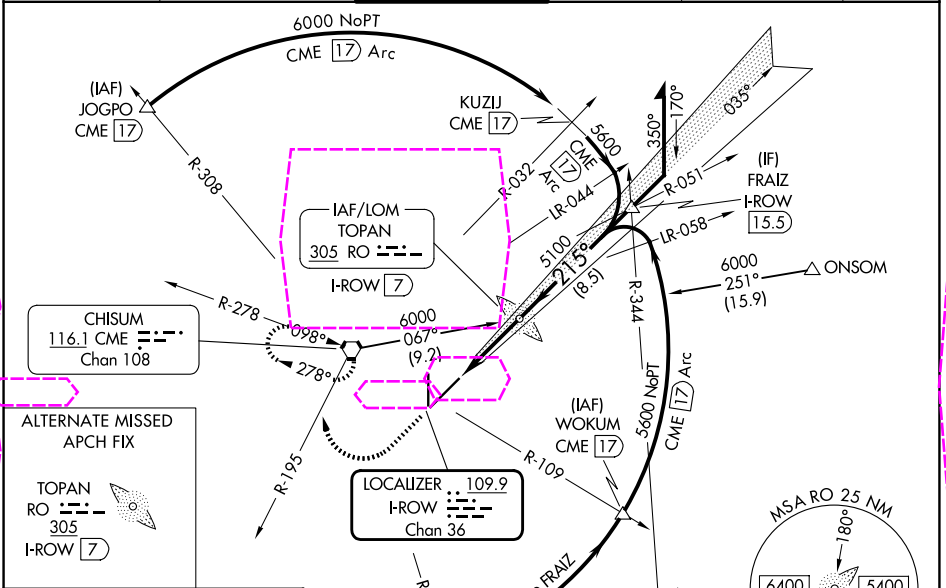
LOC/DME I-ROW 109.9 Chan 36	APP CRS 215°	Rwy Ldg 13000 TDZE 3633 Apt Elev 3671
---	------------------------	--

ILS Z or LOC Z RWY 21

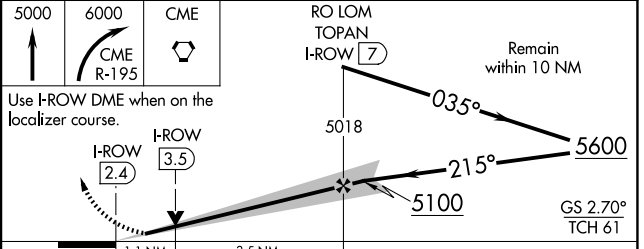
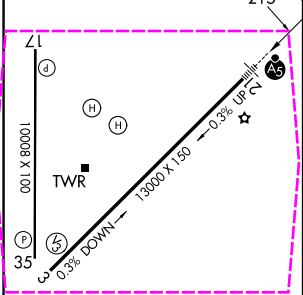
ROSWELL AIR CENTER (ROW)

ADF or DME required.	MALSR 	MISSED APPROACH: Climb to 5000 then climbing right turn to 6000 on CME VORTAC R-195 to CME VORTAC and hold, continue climb-in-hold to 6000.
VDP NA when using Artesia altimeter setting. When local altimeter setting not received, use Artesia altimeter setting: increase DA to 3913 feet; increase all MDAs 80 feet and S-LOC 21 visibility Cat C/D ¾ SM and Circling visibility Cat D ¾ SM. For inop ALS when using Artesia altimeter setting, increase ILS all Cats visibility to ¾ SM and LOC Cats C/D to 1 ¾ SM.		

ATIS 128.45 306.2	ROSWELL APP CON* 119.6 239.0	ROSWELL TOWER* 118.5 (CTAF) 0 233.7	GND CON 121.9 348.6	CLNC DEL 132.875 282.25	UNICOM 122.95
-----------------------------	--	---	-------------------------------	-----------------------------------	-------------------------



ELEV 3671	D	TDZE 3633
------------------	----------	------------------



CATEGORY	A	B	C	D
S-ILS 21	3833-½ 200 (200-½)			
S-LOC 21	4020-½ 387 (400-½)		4020-⅝ 387 (400-⅝)	
CIRCLING	4140-1 469 (500-1)		4140-1½ 469 (500-1½) 4300-2 629 (700-2)	

ROSWELL, NEW MEXICO
Amdt 18C 03NOV22

33°18'N-104°32'W

ILS Z or LOC Z RWY 21

SW-1, 07 AUG 2025 to 04 SEP 2025

SW-1, 07 AUG 2025 to 04 SEP 2025