

RICHMOND, VIRGINIA

AL-347 (FAA)

23110

VORTAC RIC	APP CRS	Rwy Idg	9003
114.1	323°	TDZE	161
Chan 88		Apt Elev	167

VOR RWY 34

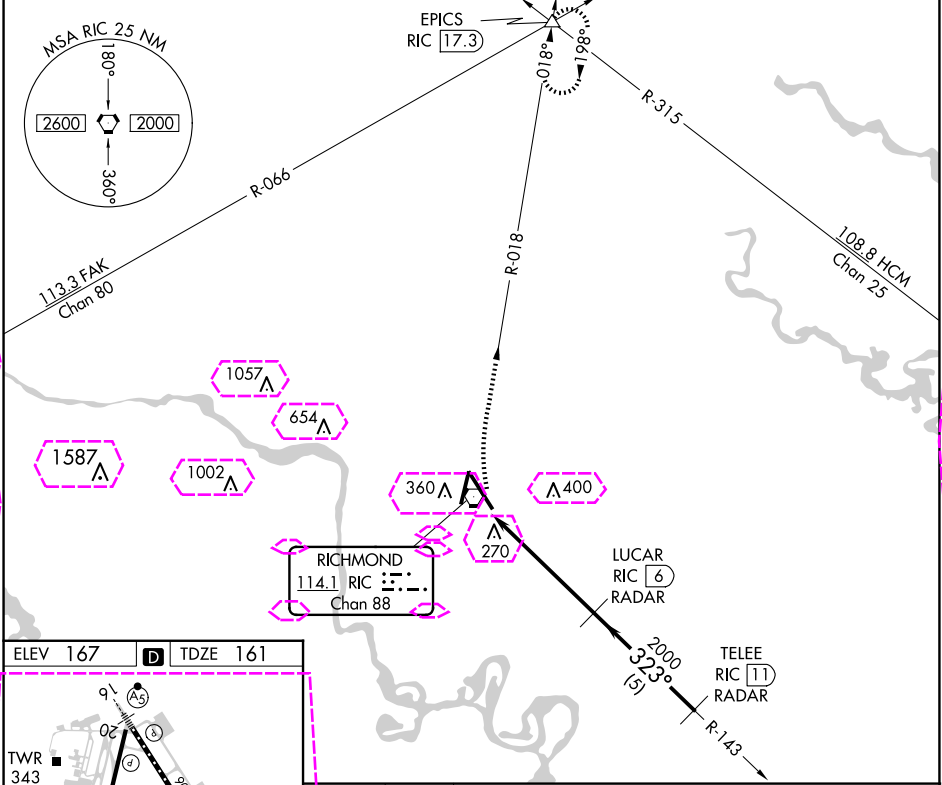
RICHMOND INTL (RIC)

DME or RADAR required. RADAR required for procedure entry.

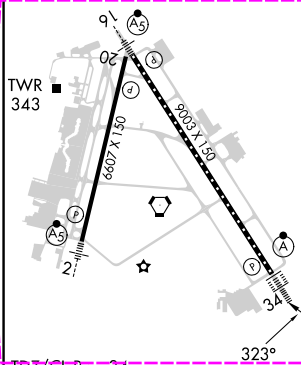
ALSF-2

MISSED APPROACH: Climbing right turn to 2000 via RIC R-018 to EPICS INT and hold.

ATIS	POTOMAC APP CON	RICHMOND TOWER	GND CON	CLNC DEL
119.15 263.025	126.4 282.375 (001°-185°) 126.75 307.2 (186°-360°)	121.1 257.8	121.9 348.6	127.55 348.6



ELEV 167	TDZE 161
----------	----------



TDZ/CL RWY 34					
HIRL Rwy 2-20 and 16-34					
REIL Rwy 20					
FAF to MAP 5.3 NM					
Knots	60	90	120	150	180
Min:Sec	5:18	3:32	2:39	2:07	1:46

2000	EPICS	VGSi and descent angles not coincident (VGSi Angle 3/00/TCH 79).		LUCAR	TELEEE
RIC R-018	△			RIC 6 RADAR	RIC 11 RADAR
RIC VORTAC	RIC 1.7	RIC 0.8	323°	2000	323°
			≤ 3.19° TCH 55		
CATEGORY	A	B	C	D	
S-34	540/24	379 (400-½)	540/40	540/50	
CIRCLING	660-1	493 (500-1)	700-1½	720-2	
			533 (600-1½)	553 (600-2)	

RICHMOND, VIRGINIA
Amdt 23C 30JAN20

37°30'N-77°19'W

RICHMOND INTL (RIC)
VOR RWY 34

NE-3, 10 JUL 2025 to 07 AUG 2025

NE-3, 10 JUL 2025 to 07 AUG 2025

RICHMOND, VIRGINIA

AL-347 (FAA)

25219

VORTAC RIC	APP CRS	Rwy Ldg	9003
114.1	323°	TDZE	161
Chan 88		Apt Elev	167

VOR RWY 34

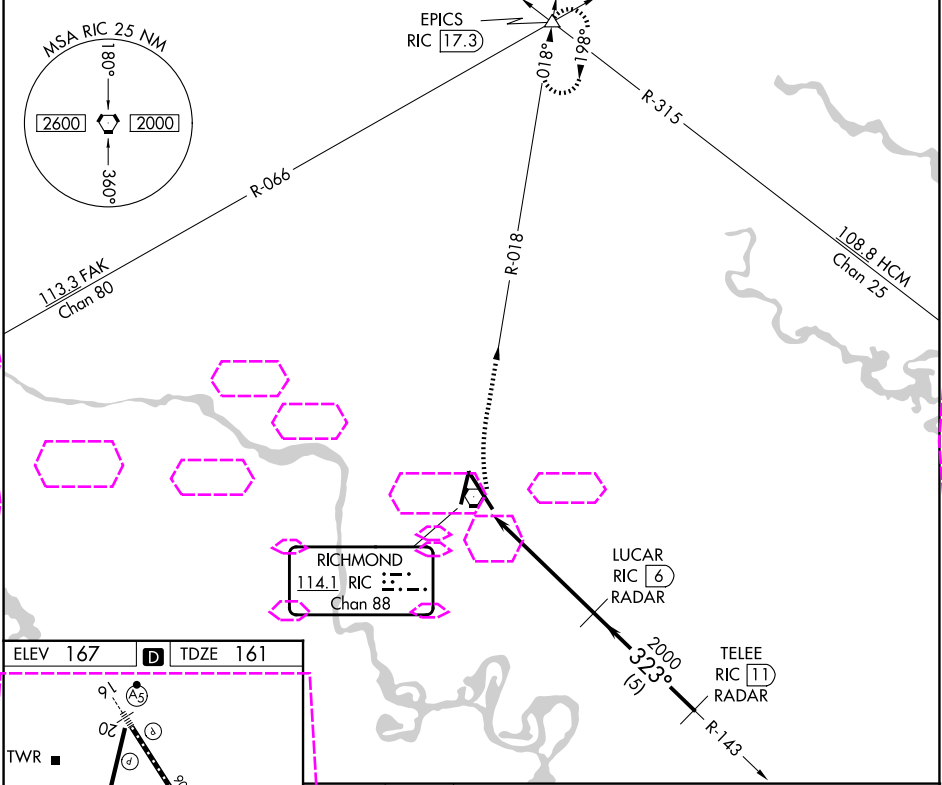
RICHMOND INTL (RIC)

DME or RADAR required. RADAR required for procedure entry.

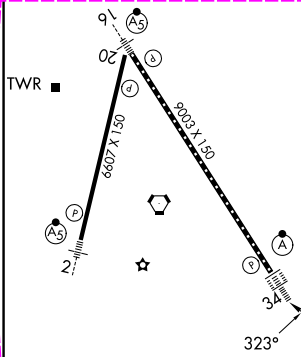
ALSF-2

MISSED APPROACH: Climbing right turn to 2000 via RIC R-018 to EPICS INT and hold.

ATIS	POTOMAC APP CON	RICHMOND TOWER	GND CON	CLNC DEL
119.15 263.025	126.4 282.375 (001°-185°) 126.75 307.2 (186°-360°)	121.1 257.8	121.9 348.6	127.55 348.6



ELEV 167	D	TDZE 161
----------	---	----------



TDZ/CL Rwy 34					
HIRL Rwy 2-20 and 16-34					
REIL Rwy 20					
FAF to MAP 5.3 NM					
Knots	60	90	120	150	180
Min:Sec	5:18	3:32	2:39	2:07	1:46

2000	EPICS	VGSi and descent angles not coincident (VGSi Angle 3/00/TCH 79).		LUCAR	TELEEE
RIC R-018	△			RIC 6 RADAR	RIC 11 RADAR
RIC VORTAC	RIC 1.7	RIC 0.8	323°	2000	323°
			≤ 3.19° TCH 55		
		1 NM	4.3 NM	5 NM	
CATEGORY	A	B	C	D	
S-34	540/24	379 (400-½)	540/40	540/50	
			379 (400-¾)	379 (400-1)	
CIRCLING	660-1	493 (500-1)	700-1½	720-2	
			533 (600-1½)	553 (600-2)	

RICHMOND, VIRGINIA
Amdt 23C 30JAN20

37°30'N-77°19'W

RICHMOND INTL (RIC)
VOR RWY 34

NE-3, 07 AUG 2025 to 04 SEP 2025

NE-3, 07 AUG 2025 to 04 SEP 2025