

VORTAC RIC	APP CRS	Rwy Idg	<b>6607</b>
<u>114.1</u>	<b>041°</b>	TDZE	<b>162</b>
Chan <b>88</b>		Apt Elev	<b>167</b>

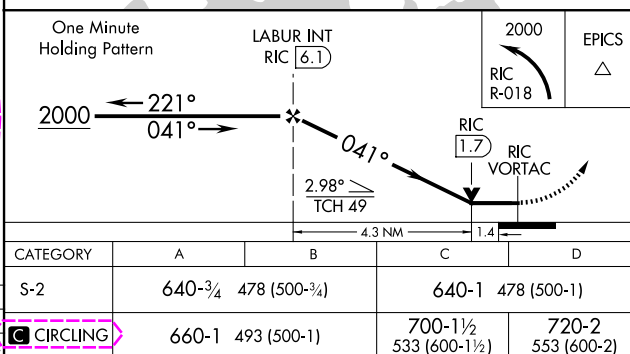
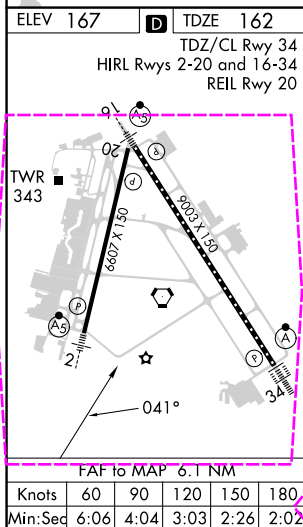
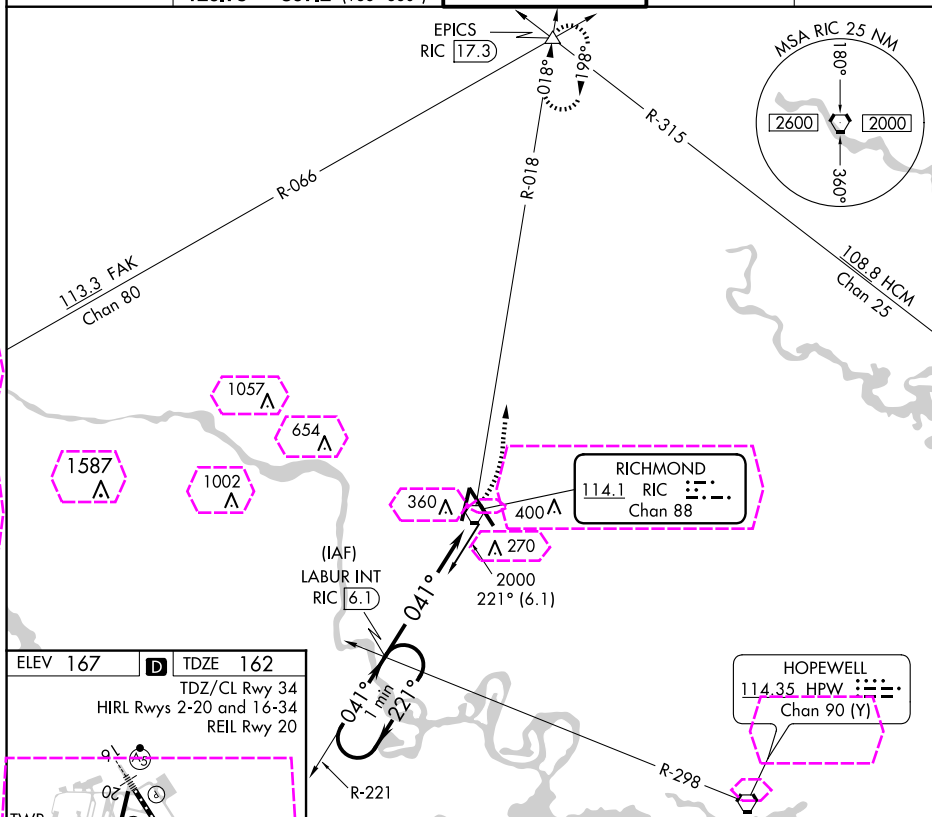
VOR RWY 2  
RICHMOND INTL (RIC)

**T** Rwy 2 helicopter visibility reduction below  $\frac{3}{4}$  SM NA. For inop ALS, increase S-2 Cat A/B visibility to 1 SM, and Cat C/D to  $1\frac{3}{8}$  SM.

MALSR

**MISSED APPROACH:** Climbing left turn to 2000 on RIC VORTAC R-018 to EPICS INT/RIC 17.3 DME and hold.

ATIS		POTOMAC APP CON		RICHMOND TOWER		GND CON		CLNC DEL	
119.15	263.025	126.4	282.375 (001°-185°)	121.1	257.8	121.9	348.6	127.55	348.6
		126.75	307.2 (186°-360°)						



RICHMOND, VIRGINIA  
Amdt 6B 30JAN20

RICHMOND INTL (RIC)  
VOR RWY 2

37°30'N-77°19'W

RICHMOND, VIRGINIA

AL-347 (FAA)

25219

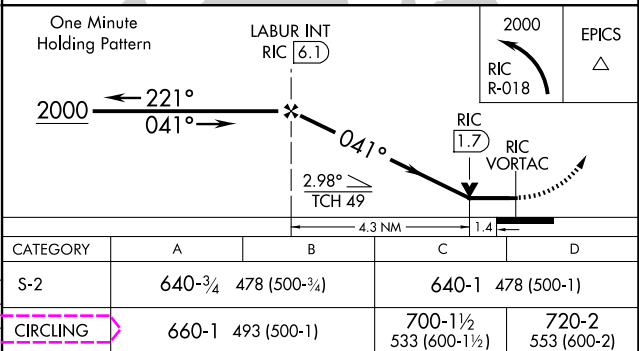
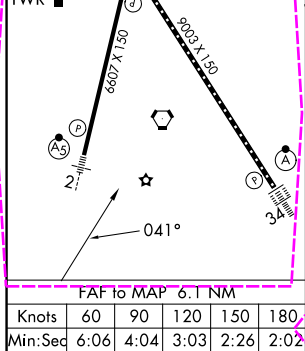
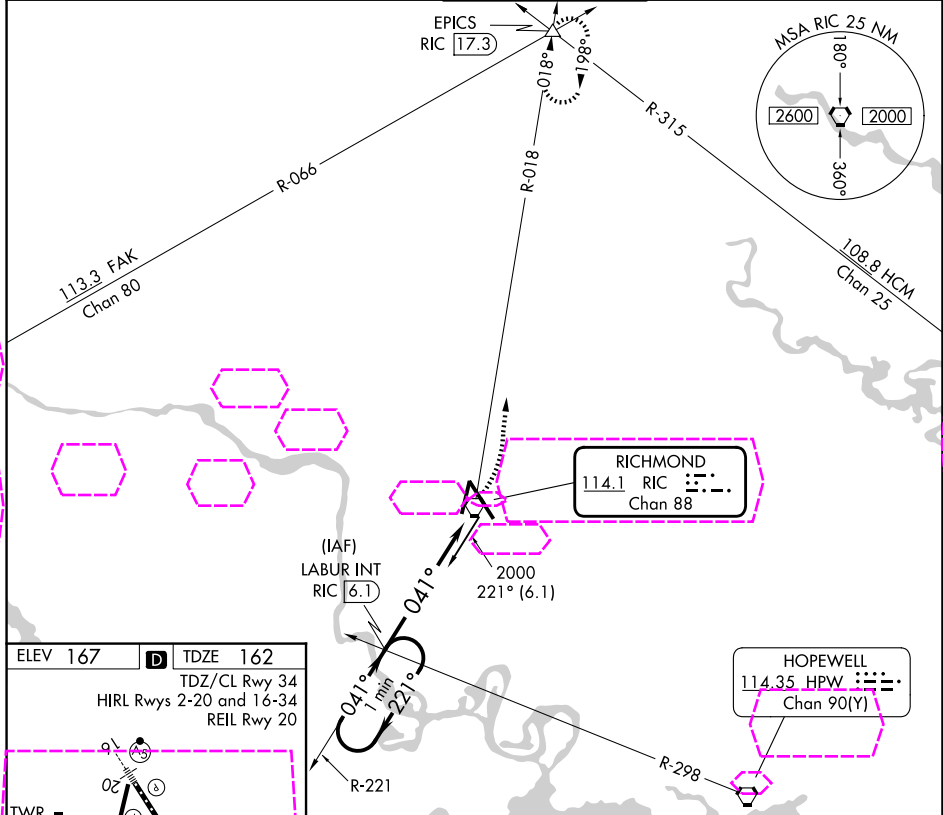
VORTAC RIC	APP CRS	Rwy Ldg	6607
114.1	041°	TDZE	162
Chan 88		Apt Elev	167

# VOR RWY 2

RICHMOND INTL (RIC)

<p><b>Rwy 2</b> helicopter visibility reduction below <math>\frac{3}{4}</math> SM NA. For inop ALS, increase S-2 Cat A/B visibility to 1 SM, and Cat C/D to 1<math>\frac{1}{2}</math> SM.</p>	<p>MALSR</p>	<p>MISSED APPROACH: Climbing left turn to 2000 on RIC VORTAC R-018 to EPICS INT/RIC 17.3 DME and hold.</p>
---	--------------	--

ATIS	POTOMAC APP CON	RICHMOND TOWER	GND CON	CLNC DEL
119.15 263.025	126.4 282.375 (001°-185°) 126.75 307.2 (186°-360°)	121.1 257.8	121.9 348.6	127.55 348.6



RICHMOND, VIRGINIA  
Amdt 6B 30JAN20

37°30'N-77°19'W

RICHMOND INTL (RIC)  
VOR RWY 2

NE-3, 07 AUG 2025 to 04 SEP 2025

NE-3, 07 AUG 2025 to 04 SEP 2025