

RICHMOND, VIRGINIA

AL-347 (FAA)

23278

VORTAC RIC	APP CRS	Rwy Idg	9003
114.1	171°	TDZE	167
Chan 88		Apt Elev	167

VOR RWY 16

RICHMOND INTL (RIC)

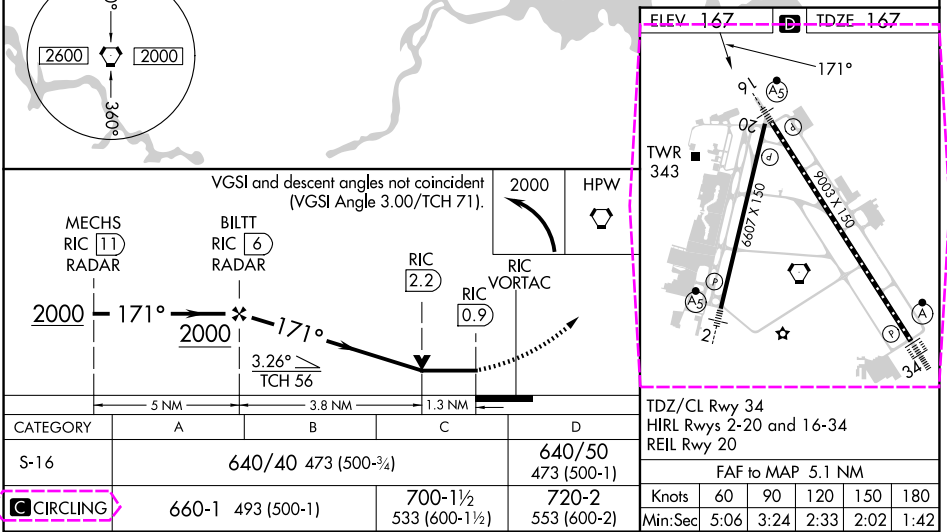
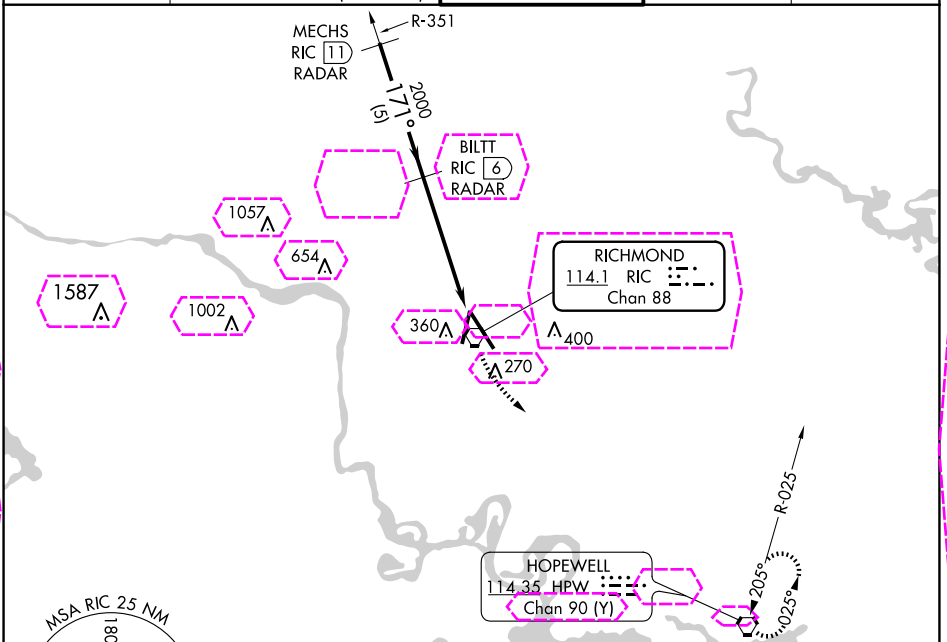
DME or RADAR required. RADAR required for procedure entry.

▼ Rwy 16 helicopter visibility reduction below RVR 4000 NA. For inop ALS, increase S-16 Cat A/B visibility to RVR 5500, and Cat C/D to 1 3/8 SM.

MALSR

MISSED APPROACH: Climbing left turn to 2000 direct HPW VORTAC and hold.

ATIS	POTOMAC APP CON	RICHMOND TOWER	GND CON	CLNC DEL
119.15 263.025	126.4 282.375 (001°-185°)	121.1 257.8	121.9 348.6	127.55 348.6
	126.75 307.2 (186°-360°)			



RICHMOND, VIRGINIA
Amdt 27C 30JAN20

37°30'N-77°19'W

RICHMOND INTL (RIC)
VOR RWY 16

25219

VORTAC RIC 114.1 Chan 88	APP CRS 171°	Rwy Ldg 9003 TDZE 167 Apt Elev 167
--	------------------------	---

VOR RWY 16
RICHMOND INTL (RIC)

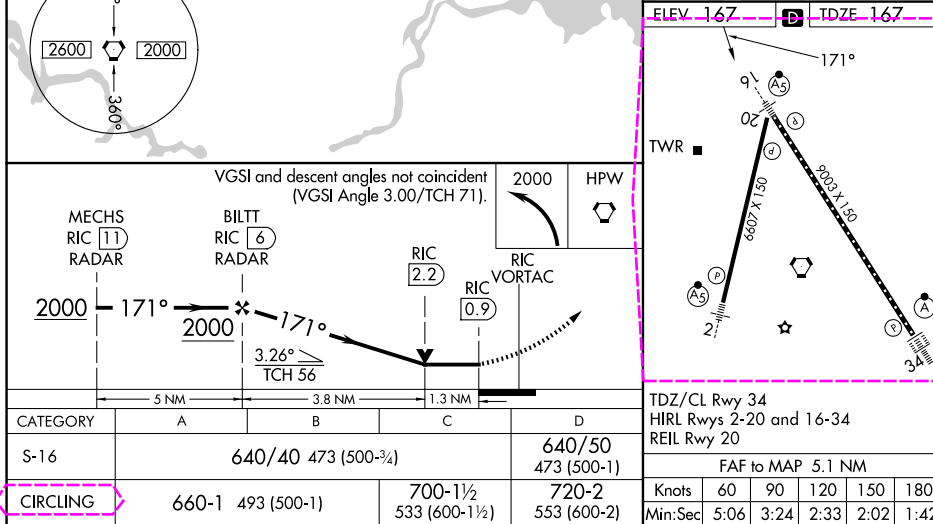
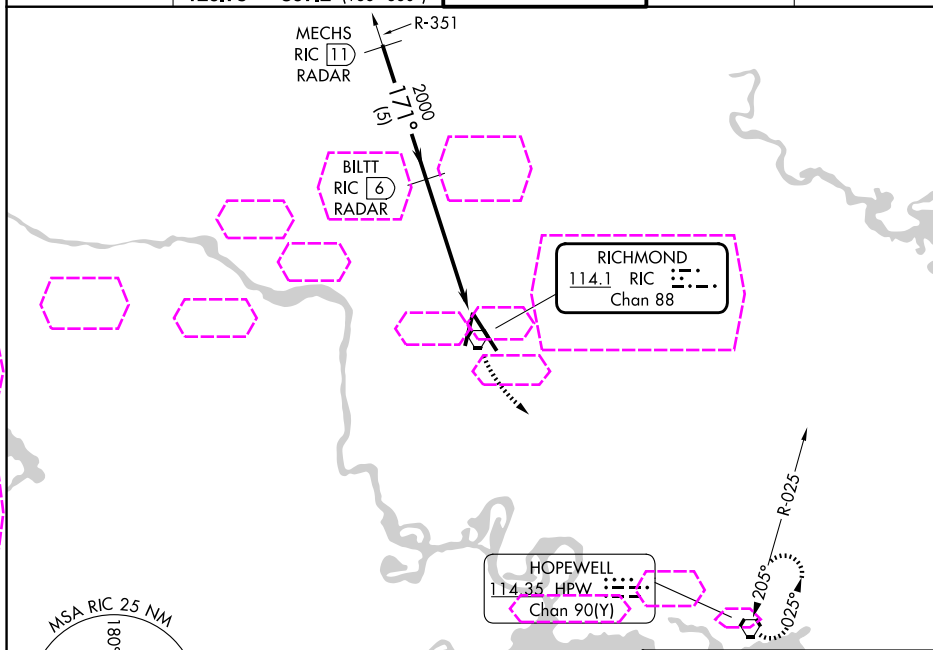
DME or RADAR required. RADAR required for procedure entry.

T Rwy 16 helicopter visibility reduction below RVR 4000 NA. For inop ALS, increase S-16 Cat A/B visibility to RVR 5500, and Cat C/D to 1 $\frac{3}{8}$ SM.

MALSR

MISSED APPROACH: Climbing left turn to 2000 direct HPW VORTAC and hold.

ATIS		POTOMAC APP CON		RICHMOND TOWER		GND CON		CLNC DEL	
119.15	263.025	126.4	282.375 (001°-185°)	121.1	257.8	121.9	348.6	127.55	348.6
		126.75	307.2 (186°-360°)						



RICHMOND, VIRGINIA
Amdt 27C 30JAN20

37°30'N-77°19'W

RICHMOND INTL (RIC)
VOR RWY 16

NE-3, 07 AUG 2025 to 04 SEP 2025

NE-3, 07 AUG 2025 to 04 SEP 2025