

RICHMOND, VIRGINIA

AL-347 (FAA)

23110

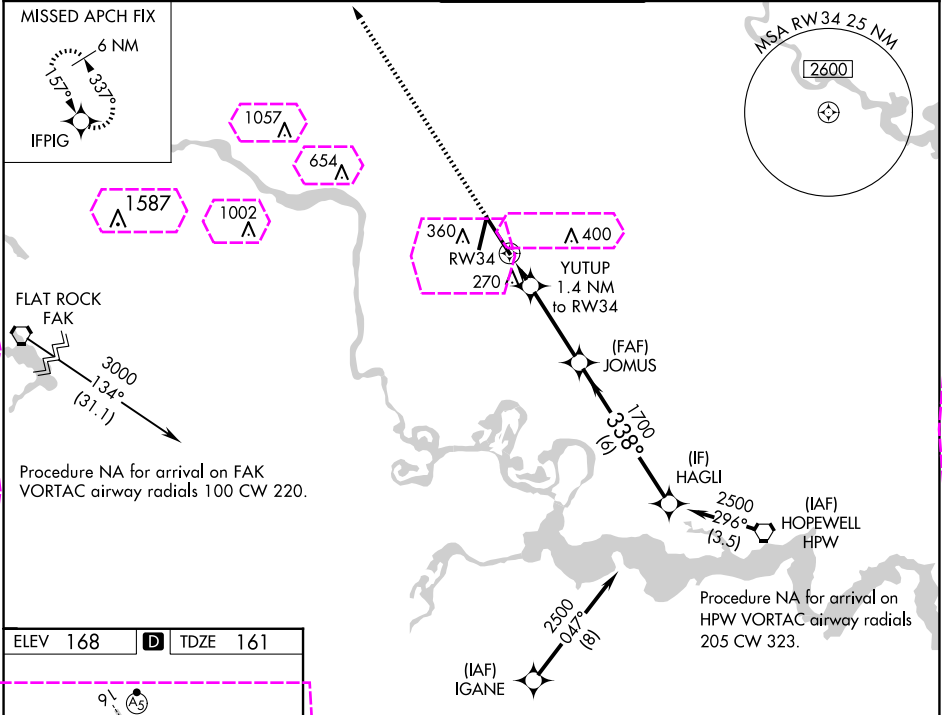
WAAS CH 97520 W34A	APP CRS 338°	Rwy Idg 9003 TDZE 161 Apt Elev 168
--	------------------------	---

RNAV (GPS) Z RWY 34

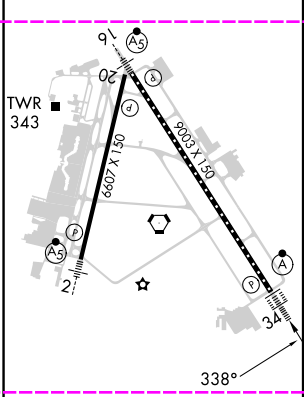
RICHMOND INTL (RIC)

RNP APCH. ▼ For uncompensated Baro-VNAV systems, LNAV/VNAV NA below -11°C or above 54°C. For inop ALS, increase LNAV/VNAV all Cats visibility to 1¼ SM and LNAV Cats C and D visibility to RVR 5500.	ALSF-2 A MISSED APPROACH: Climb to 2500 direct IFPIG and hold.
--	---

ATIS 119.15 263.025	POTOMAC APP CON 126.4 282.375 (001°-185°) 126.75 307.2 (186°-360°)	RICHMOND TOWER 121.1 257.8	GND CON 121.9 348.6	CLNC DEL 127.55 348.6
-------------------------------	--	--------------------------------------	-------------------------------	---------------------------------



ELEV 168	D	TDZE 161
----------	---	----------



2500	IFPIG	VGSI and RNAV glidepath not coincident (VGSI Angle 3.00/TCH 79).	HAGLI	2500
*LNAV only.	YUTUP 1.4 NM to RW34	JOMUS 1700	338°	1700
RW34	1.4 NM	3.3 NM	6 NM	GP 3.00° TCH 54
660				
CATEGORY	A	B	C	D
LPV DA		361/18	200 (200-½)	
LNAV/VNAV DA		530/37	369 (400-¾)	
LNAV MDA	520/24	359 (400-½)	520/30	359 (400-¾)
CIRCLING	660-1	492 (500-1)	700-1½ 532 (600-1½)	720-2 552 (600-2)

RICHMOND, VIRGINIA
Amdt 1E 30JAN20

37°30'N-77°19'W

RNAV (GPS) Z RWY 34

RICHMOND, VIRGINIA

AL-347 (FAA)

25219

WAAS CH 97520 W34A	APP CRS 338°	Rwy Ldg TDZE 161 Apt Elev 168
--	------------------------	---

RNAV (GPS) Z RWY 34

RICHMOND INTL (RIC)

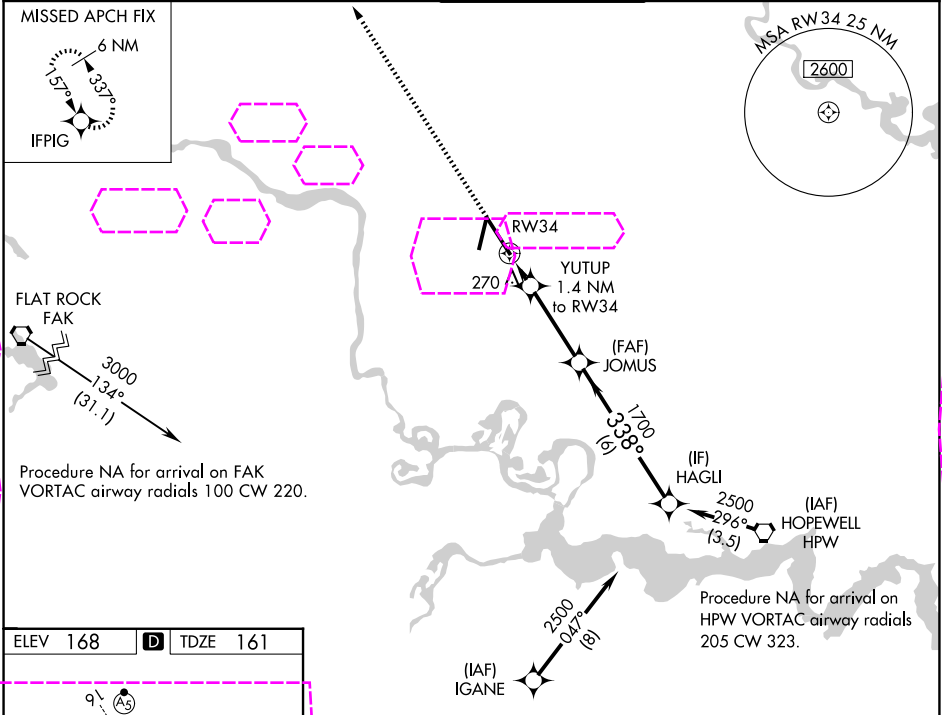
RNP APCH.

For uncompensated Baro-VNAV systems, LNAV/VNAV NA below -11°C or above 54°C.
For inop ALS, increase LNAV/VNAV all Cats visibility to 1¼ SM and LNAV Cats C and D visibility to RVR 5500.

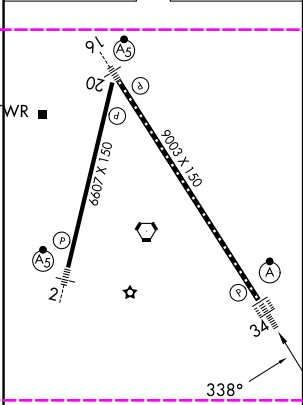
ALSF-2

MISSED APPROACH:
Climb to 2500 direct
IFPIG and hold.

ATIS 119.15 263.025	POTOMAC APP CON 126.4 282.375 (001°-185°) 126.75 307.2 (186°-360°)	RICHMOND TOWER 121.1 257.8	GND CON 121.9 348.6	CLNC DEL 127.55 348.6
-------------------------------	--	--------------------------------------	-------------------------------	---------------------------------



ELEV 168	D	TDZE 161
-----------------	----------	-----------------



TDZ/CL Rwy 34
HIRL Rwy 2-20 and 16-34
REIL Rwy 20

2500	IFPIG	VGSI and RNAV glidepath not coincident (VGSI Angle 3.00/TCH 79).	HAGLI	2500
*LNAV only.	YUTUP 1.4 NM to RW34	JOMUS 1700	338°	1700
RW34	1.4 NM	3.3 NM	6 NM	
CATEGORY	A	B	C	D
LPV DA	361/18		200 (200-½)	
LNAV/VNAV DA	530/37		369 (400-¾)	
LNAV MDA	520/24 359 (400-½)		520/30 359 (400-¾)	
CIRCLING	660-1 492 (500-1)		700-1½ 720-2 532 (600-1½) 552 (600-2)	

RICHMOND, VIRGINIA
Amdt 1E 30JAN20

37°30'N-77°19'W

RNAV (GPS) Z RWY 34

NE-3, 07 AUG 2025 to 04 SEP 2025

NE-3, 07 AUG 2025 to 04 SEP 2025