

RICHMOND, VIRGINIA

AL-347 (FAA)

23110

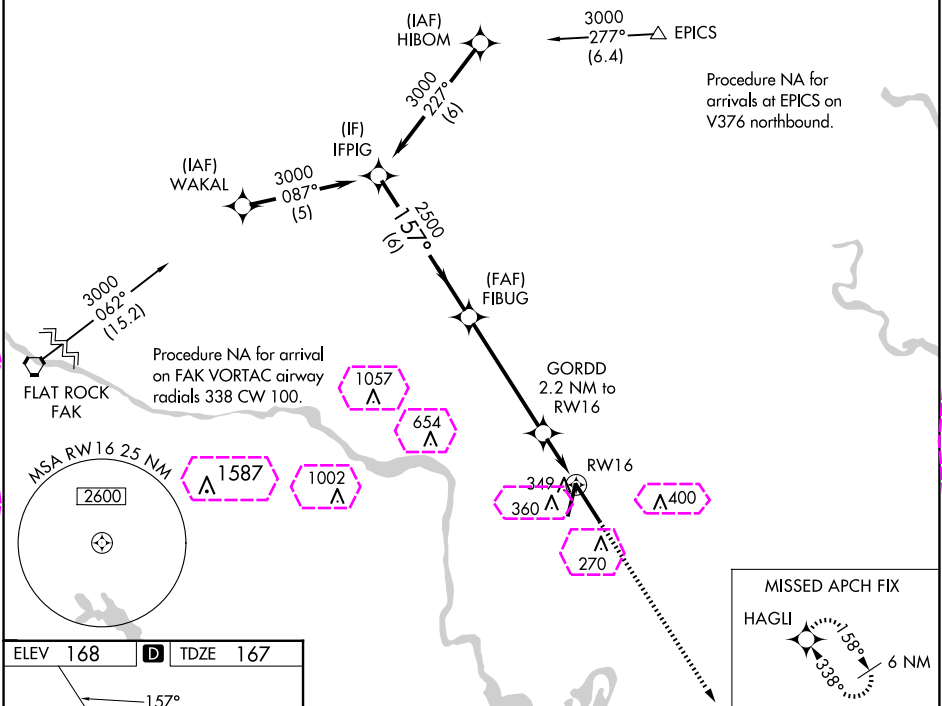
WAAS CH <b>72720</b> <b>W16A</b>	APP CRS <b>157°</b>	Rwy Idg <b>9003</b> TDZE <b>167</b> Apt Elev <b>168</b>
--	------------------------	---

# RNAV (GPS) Z RWY 16

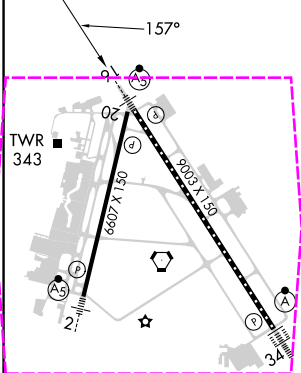
RICHMOND INTL (RIC)

RNP APCH: ▼ For uncompensated Baro-VNAV systems, LNAV/VNAV NA below -11°C (13°F) or above 54°C (130°F). For inop ALS increase LNAV/VNAV all Cnts visibility to RVR 5400. ** RVR 1800 authorized with use of FD or AP or HUD to DA.	MALSR 	MISSED APPROACH: Climb to 2500 direct HAGLI and hold.
---	-----------	--

ATIS <b>119.15 263.025</b>	POTOMAC APP CON <b>126.4 282.375</b> (001°-185°) <b>126.75 307.2</b> (186°-360°)	RICHMOND TOWER <b>121.1 257.8</b>	GND CON <b>121.9 348.6</b>	CLNC DEL <b>127.55 348.6</b>
-------------------------------	--	--------------------------------------	-------------------------------	---------------------------------



ELEV <b>168</b>	<b>D</b> TDZE <b>167</b>
-----------------	--------------------------



TDZ/CL Rwy 34  
HIRL Rwy 2-20 and 16-34  
REIL Rwy 20

VGSIs and RNAV glidepath not coincident (VGSi Angle 3.00/TCH 71).				2500	HAGLI
GP 3.00° TCH 54				2500	*LNAV only.
6 NM				5 NM	1 NM
CATEGORY				A	B
LPV DA **				367/24	200 (200-½)
LNAV/VNAV DA				504/31	337 (400-⅔)
LNAV MDA				600/24 433 (500-½)	600/40 433 (500-¾)
<b>C</b> CIRCLING				660-1 492 (500-1)	700-1½ 532 (600-1½)
					720-2 552 (600-2)

RICHMOND, VIRGINIA  
Amdt 1D 19JUL18

37°30'N-77°19'W

# RICHMOND INTL (RIC) RNAV (GPS) Z RWY 16

RICHMOND, VIRGINIA


AL-347 (FAA)

25219

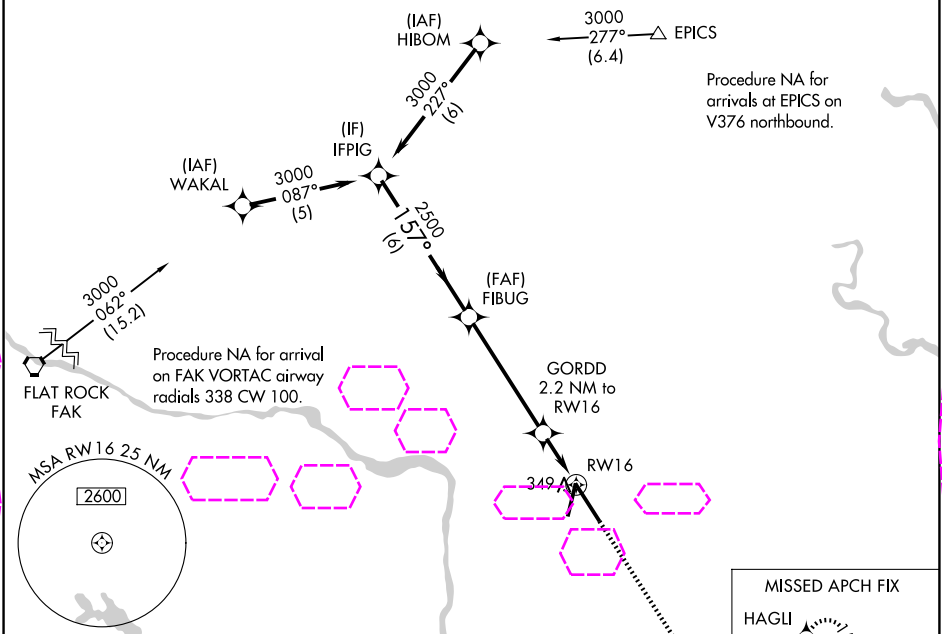
WAAS CH <b>72720</b> <b>W16A</b>	APP CRS <b>157°</b>	Rwy Ldg <b>9003</b> TDZE <b>167</b> Apt Elev <b>168</b>
--	------------------------	---

# RNAV (GPS) Z RWY 16

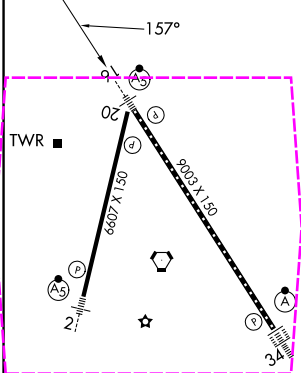
RICHMOND INTL (RIC)

RNP APCH: ▼ For uncompensated Baro-VNAV systems, LNAV/VNAV NA below -11°C (13°F) or above 54°C (130°F). For inop ALS increase LNAV/VNAV all Cts visibility to RVR 5400. ** RVR 1800 authorized with use of FD or AP or HUD to DA.	MALSR 	MISSED APPROACH: Climb to 2500 direct HAGLI and hold.
--	--	--

ATIS <b>119.15 263.025</b>	POTOMAC APP CON <b>126.4 282.375</b> (001°-185°) <b>126.75 307.2</b> (186°-360°)	RICHMOND TOWER <b>121.1 257.8</b>	GND CON <b>121.9 348.6</b>	CLNC DEL <b>127.55 348.6</b>
-------------------------------	--	--------------------------------------	-------------------------------	---------------------------------



ELEV <b>168</b>	<b>D</b>	TDZE <b>167</b>
-----------------	----------	-----------------



TDZ/CL Rwy 34  
HIRL Rwy 2-20 and 16-34  
REIL Rwy 20

VGSIs and RNAV glidepath not coincident (VGSi Angle 3.00/TCH 71).				2500	HAGLI
GP 3.00° TCH 54				2500	*LNAV only.
				920*	
				1.2 NM to RW16	
				6 NM	
CATEGORY	A	B	C	D	
LPV DA **	367/24 200 (200-½)				
LNAV/VNAV DA	504/31 337 (400-⅝)				
LNAV MDA	600/24	433 (500-½)	600/40	433 (500-¾)	
CIRCLING	660-1	492 (500-1)	700-1½ 532 (600-1½)	720-2 552 (600-2)	

RICHMOND, VIRGINIA  
Amdt 1D 19JUL18

37°30'N-77°19'W

# RNAV (GPS) Z RWY 16