

RICHMOND, VIRGINIA

AL-347 (FAA)

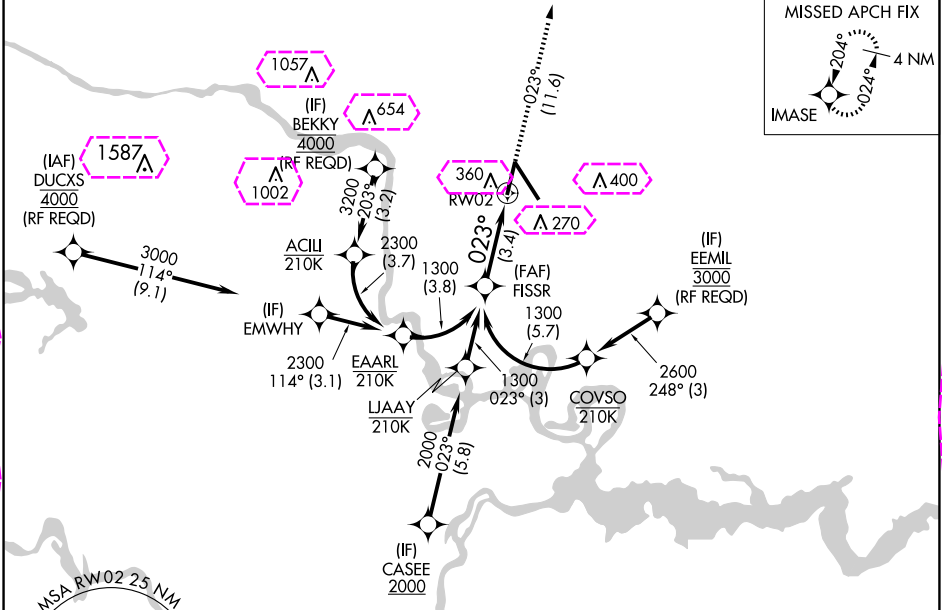
23110

APP CRS	Rwy Idg	6607
023°	TDZE	161
	Apt Elev	168

RNAV (RNP) Y RWY 2

RICHMOND INTL (RIC)

RNP AR APCH.		MALSR	MISSED APPROACH: Climb to 2100 on track 023° to IMASE and hold.	
▼ For uncompensated Baro-VNAV systems, procedure NA below -11°C (13°F) or above 54°C (130°F). Rwy 2 helicopter visibility reduction below ¾ SM NA. For inop ALS, increase RNP 0.11 all Cats visibility to 1 SM and RNP 0.3 all Cats visibility to 1¼ SM.		AS		
ATIS	POTOMAC APP CON	RICHMOND TOWER		GND CON
119.15 263.025	126.4 282.375 (001°-185°) 126.75 307.2 (186°-360°)	121.1 257.8		121.9 348.6
				CLNC DEL
				127.55 348.6



ELEV 168 TDZE 161

See planview for multiple IF locations.

FISSR 1300

GP 3.00° TCH 50

2100 IMASE

tr 023°

RW02

3.4 NM

CATEGORY	A	B	C	D
RNP 0.11 DA		506-¾	345 (400-¾)	
RNP 0.30 DA		595-1	434 (500-1)	

AUTHORIZATION REQUIRED

TWR 343

023°

TDZ/CL Rwy 34

HIRL Rwys 2-20 and 16-34

REIL Rwy 20

