

RICHMOND, VIRGINIA

AL-347 (FAA)

24305

APP CRS	Rwy Idg	6607
203°	TDZE	168
	Apt Elev	168

RNAV (RNP) Y RWY 20

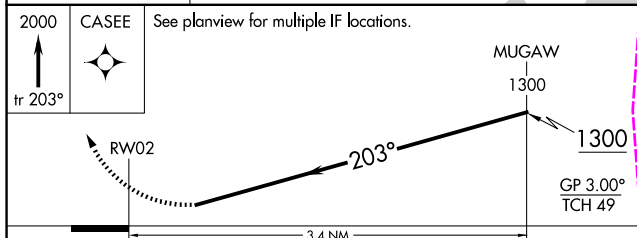
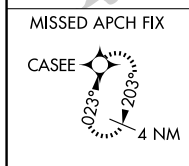
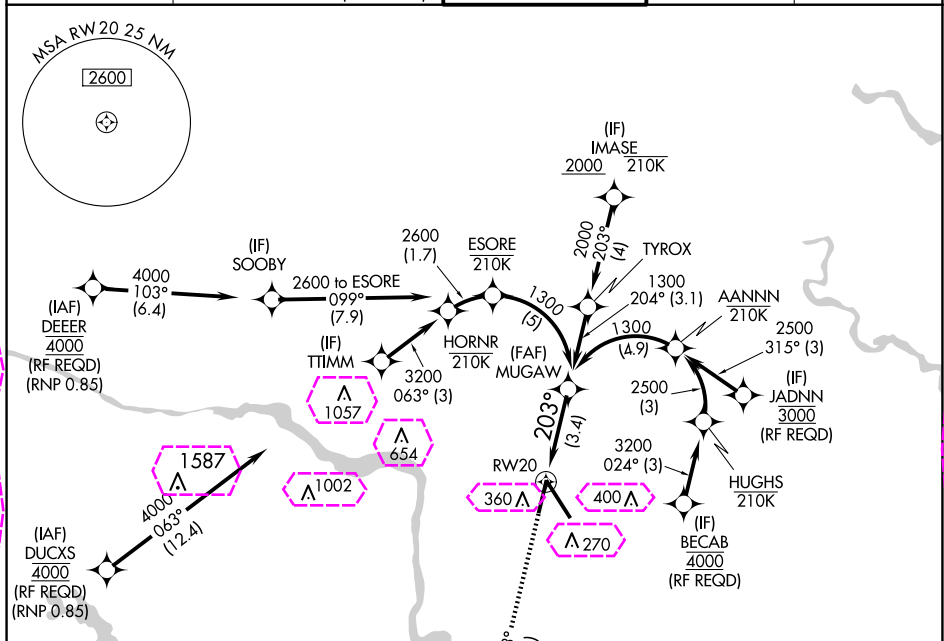
RICHMOND INTL (RIC)

RNP AR APCH.

For uncompensated Baro-VNAV systems, procedure NA below -11°C or above 54°C.

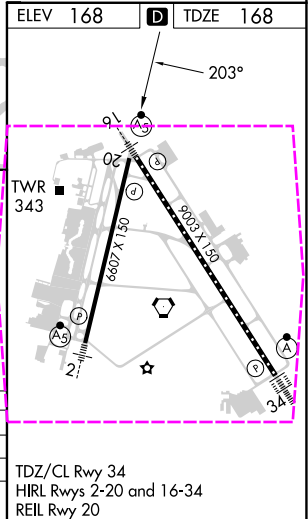
MISSED APPROACH: Climb to 2000 on track 203° CASEE and hold.

ATIS	POTOMAC APP CON	RICHMOND TOWER	GND CON	CLNC DEL
119.15 263.025	126.4 282.375 (001°-185°) 126.75 307.2 (186°-360°)	121.1 257.8	121.9 348.6	127.55 348.6



CATEGORY	A	B	C	D
RNP 0.11 DA	505-1	337 (400-1)		
RNP 0.30 DA	613-1½	445 (500-1½)		

AUTHORIZATION REQUIRED



RICHMOND, VIRGINIA

Orig-C 30JAN20

37°30'N-77°19'W

RICHMOND INTL (RIC)

RNAV (RNP) Y RWY 20

NE-3, 10 JUL 2025 to 07 AUG 2025

NE-3, 10 JUL 2025 to 07 AUG 2025

RICHMOND, VIRGINIA

AL-347 (FAA)

25219

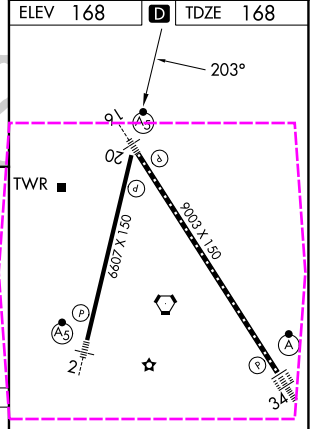
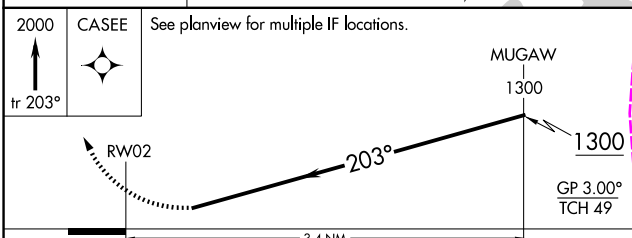
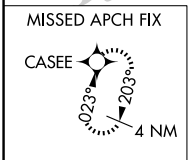
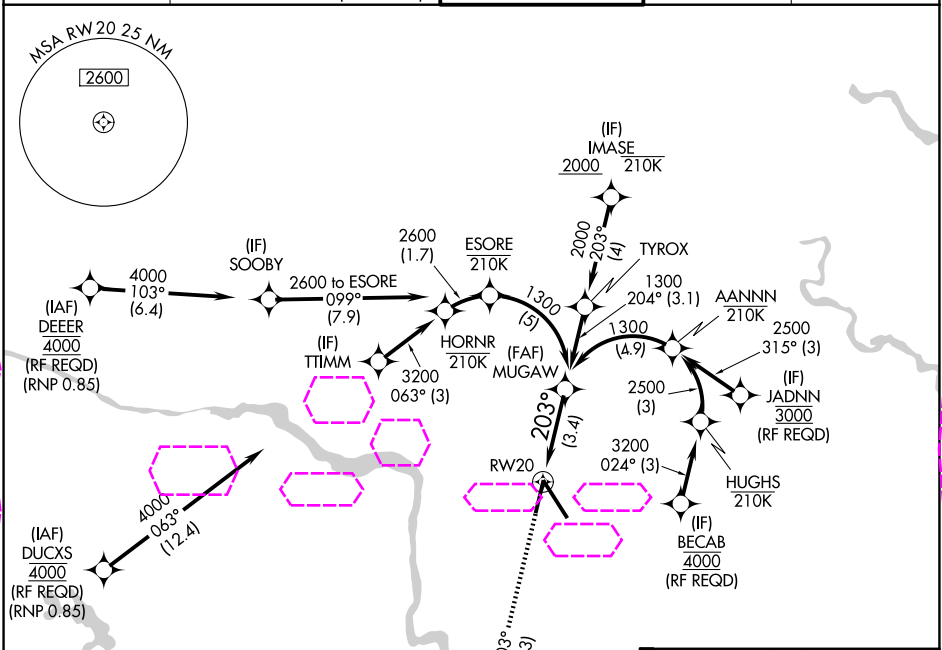
APP CRS	Rwy Ldg	6607
203°	TDZE	168
	Apt Elev	168

RNAV (RNP) Y RWY 20

RICHMOND INTL (RIC)

RNP AR APCH.	MISSED APPROACH: Climb to 2000 on track 203° CASEE and hold.
▼ For uncompensated Baro-VNAV systems, procedure NA below -11°C or above 54°C.	

ATIS	POTOMAC APP CON	RICHMOND TOWER	GND CON	CLNC DEL
119.15 263.025	126.4 282.375 (001°-185°) 126.75 307.2 (186°-360°)	121.1 257.8	121.9 348.6	127.55 348.6



CATEGORY	A	B	C	D
RNP 0.11 DA		505-1	337 (400-1)	
RNP 0.30 DA		613-1½	445 (500-1½)	

AUTHORIZATION REQUIRED

TDZ/CL Rwy 34
HIRL Rwy 2-20 and 16-34
REIL Rwy 20

RICHMOND, VIRGINIA

Orig-C 30JAN20

37°30'N-77°19'W

RICHMOND INTL (RIC)

RNAV (RNP) Y RWY 20

NE-3, 07 AUG 2025 to 04 SEP 2025

NE-3, 07 AUG 2025 to 04 SEP 2025