

RICHMOND, VIRGINIA

AL-347 (FAA)

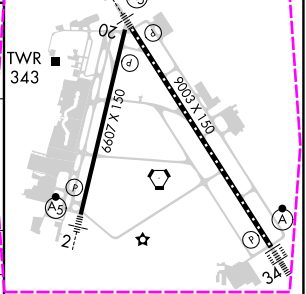
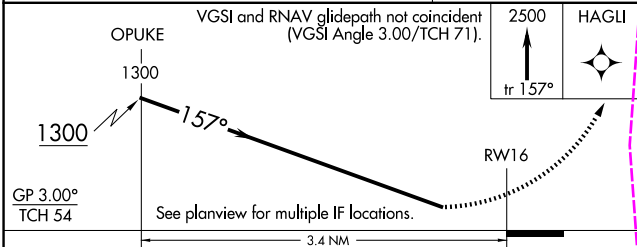
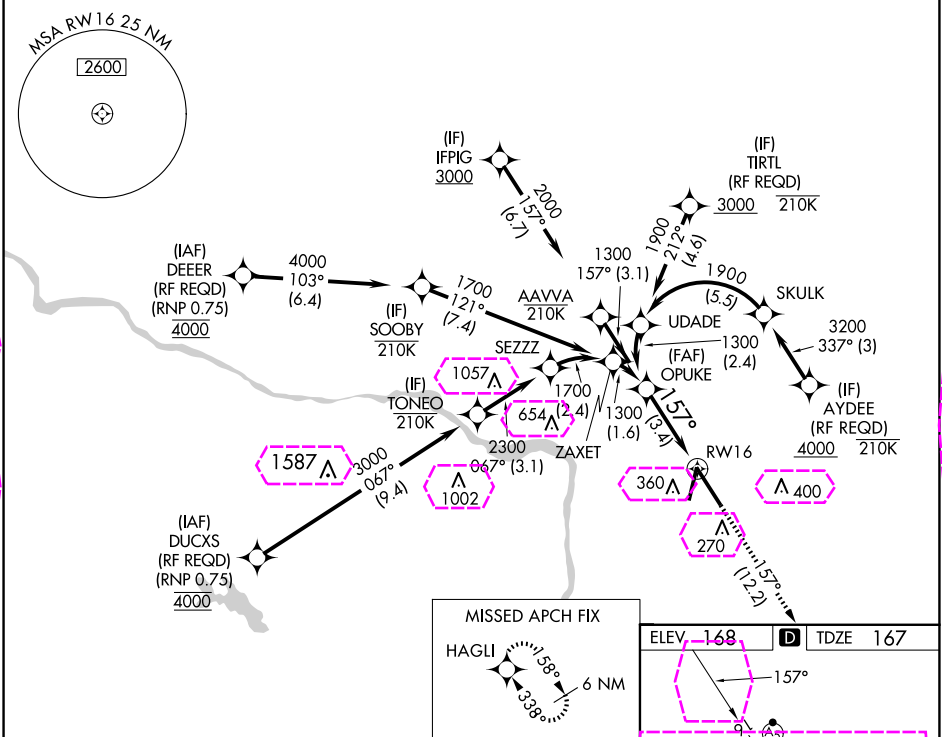
23110

APP CRS	Rwy Idg	9003
157°	TDZE	167
	Apt Elev	168

RNAV (RNP) Y RWY 16

RICHMOND INTL (RIC)

RNP AR APCH.		MALSR	MISSED APPROACH: Climb to 2500 on track 157° to HAGLI and hold.	
▼ For uncompensated Baro-VNAV systems, procedure NA below -11°C (13°F) or above 54°C (130°F). For inop ALS, increase RNP 0.11 all Cats visibility to RVR 5500 and RNP 0.30 all Cats visibility to 1½ SM.		AS		
ATIS	POTOMAC APP CON	RICHMOND TOWER	GND CON	CLNC DEL
119.15 263.025	126.4 282.375 (001°-185°) 126.75 307.2 (186°-360°)	121.1 257.8	121.9 348.6	127.55 348.6



CATEGORY	A	B	C	D
RNP 0.11 DA	506/40 339 (400-¾)			
RNP 0.30 DA	606/50 439 (500-1)			
AUTHORIZATION REQUIRED				

TDZ/CL Rwy 34
HIRL Rwy 2-20 and 16-34
REIL Rwy 20

NE-3, 10 JUL 2025 to 07 AUG 2025

NE-3, 10 JUL 2025 to 07 AUG 2025

RICHMOND, VIRGINIA

AL-347 (FAA)

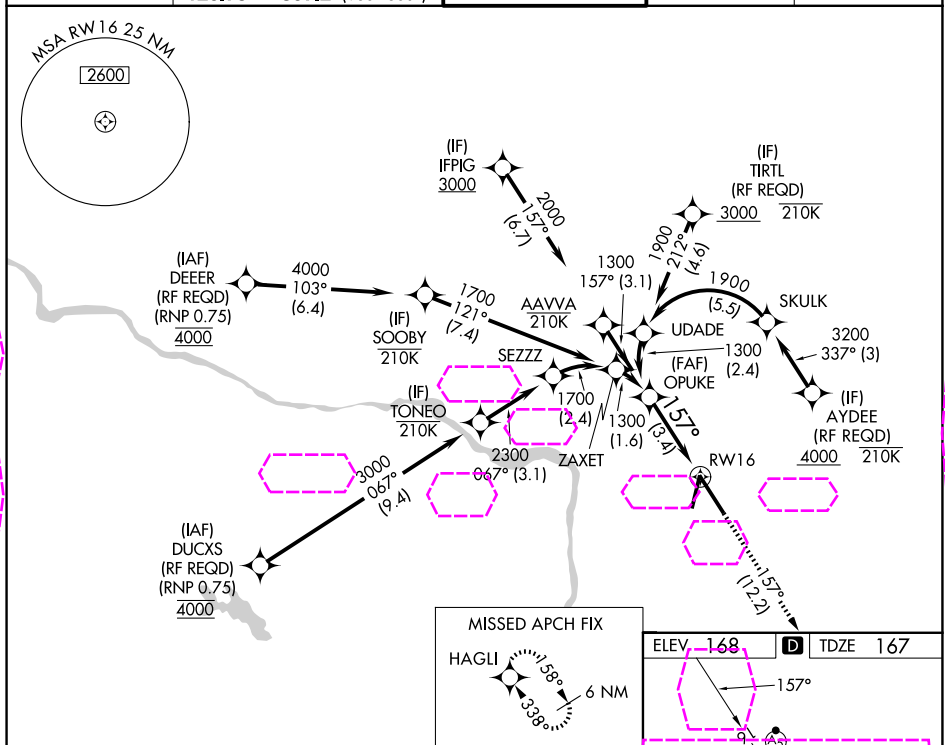
25219

APP CRS	Rwy Ldg	9003
157°	TDZE	167
	Apt Elev	168

RNAV (RNP) Y RWY 16

RICHMOND INTL (RIC)

RNP AR APCH.		MALSR	MISSED APPROACH: Climb to 2500 on track 157° to HAGLI and hold.	
▼ For uncompensated Baro-VNAV systems, procedure NA below -11°C (13°F) or above 54°C (130°F). For inop ALS, increase RNP 0.11 all Cats visibility to RVR 5500 and RNP 0.30 all Cats visibility to 1½ SM.		(AS)		
ATIS	POTOMAC APP CON	RICHMOND TOWER	GND CON	CLNC DEL
119.15 263.025	126.4 282.375 (001°-185°) 126.75 307.2 (186°-360°)	121.1 257.8	121.9 348.6	127.55 348.6



<div><div><p>OPUKE</p><p>1300</p><p>1300</p><p>GP 3.00° TCH 54</p><p>See planview for multiple IF locations.</p><p>3.4 NM</p><p>RW16</p></div><div><p>VGSI and RNAV glidepath not coincident (VGSI Angle 3.00/TCH 71).</p><p>2500</p><p>tr 157°</p><p>HAGLI</p></div></div>				
CATEGORY	A	B	C	D
RNP 0.11 DA	506/40 339 (400-¾)			
RNP 0.30 DA	606/50 439 (500-1)			
AUTHORIZATION REQUIRED				

TWR

02

6607 X 150

9003 X 150

AS

2

34

TDZ/CL Rwy 34

HIRL Rws 2-20 and 16-34

REIL Rwy 20

RICHMOND, VIRGINIA

Orig-C 19JUL18

37°30'N-77°19'W

RICHMOND INTL (RIC)

RNAV (RNP) Y RWY 16

NE-3, 07 AUG 2025 to 04 SEP 2025

NE-3, 07 AUG 2025 to 04 SEP 2025