

RICHMOND, VIRGINIA

AL-347 (FAA)

23278

LOC I-BNE <b>110.7</b>	APP CRS <b>337°</b>	Rwy Idg <b>9003</b> TDZE <b>161</b> Apt Elev <b>168</b>
---------------------------	------------------------	---

ILS or LOC RWY 34  
RICHMOND INTL (RIC)

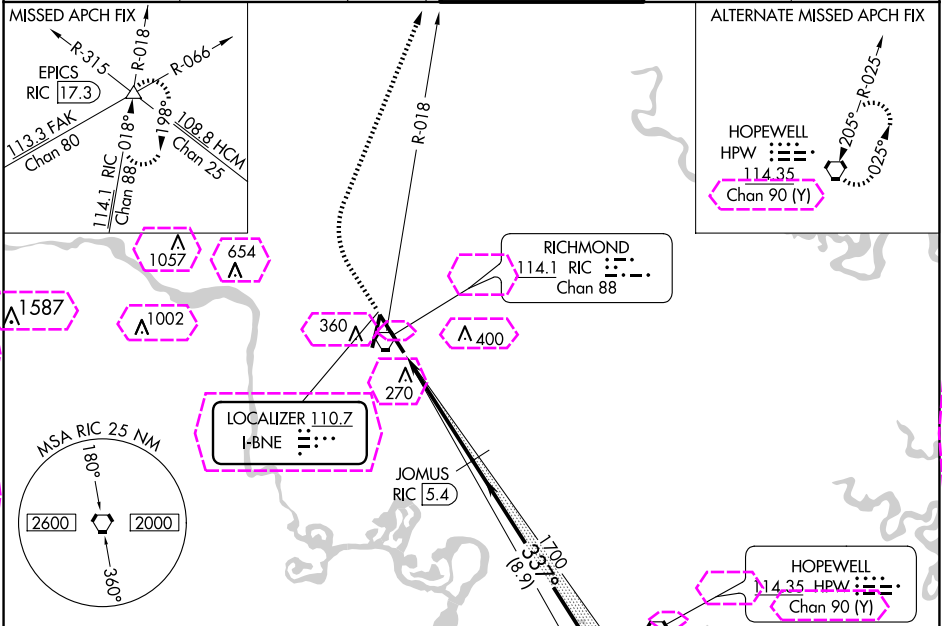
DME required for LOC only.

For inop ALS, increase S-ILS 34 Cat E visibility to RVR 4000 and S-LOC 34 Cat E visibility to 1% SM. DME from RIC VORTAC. DME use requires simultaneous reception of I-BNE and RIC DME.

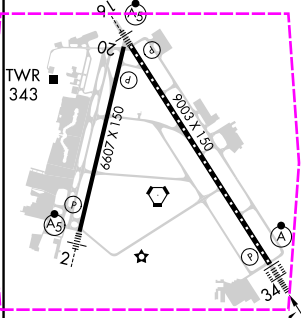
ALSF-2

MISSED APPROACH: Climb to 800 then climbing right turn to 2000 on RIC VORTAC R-018 to EPICS INT/RIC 17.3 DME and hold.

ATIS <b>119.15 263.025</b>	POTOMAC APP CON <b>126.4 282.375</b> (001°-185°) <b>126.75 307.2</b> (186°-360°)	RICHMOND TOWER <b>121.1 257.8</b>	GND CON <b>121.9 348.6</b>	CLNC DEL <b>127.55 348.6</b>
-------------------------------	--	--------------------------------------	-------------------------------	---------------------------------



ELEV <b>168</b>	<b>D</b>	TDZE <b>161</b>
-----------------	----------	-----------------



TDZ/CL Rwy 34 HIRL Rwys 2-20 and 16-34 REIL Rwy 20	FAF to MAP 4.7 NM	800	2000	EPICS	JOMUS RIC 5.4	JUVPO RIC 14.3	1700	1700	337°	1700	GS 3.00° TCH 54
		RIC R-018		RIC 1.9	VGSI and ILS glidepath not coincident (VGSI Angle 3.00/TCH 79).						
		1.2 NM		3.5 NM		8.9 NM					
CATEGORY	A	B	C	D	E						
S-ILS 34	361/18 200 (200-½)										
S-LOC 34	620/24	459 (500-½)	620/45		459 (500-¾)						
<b>CIRCLING</b>	660-1	492 (500-1)	700-1½	720-2	740-2						
			532 (600-1½)	552 (600-2)	572 (600-2)						

RICHMOND, VIRGINIA

Amdt 15A 15JUN23

37°30'N-77°19'W

RICHMOND INTL (RIC)

ILS or LOC RWY 34

RICHMOND, VIRGINIA

AL-347 (FAA)

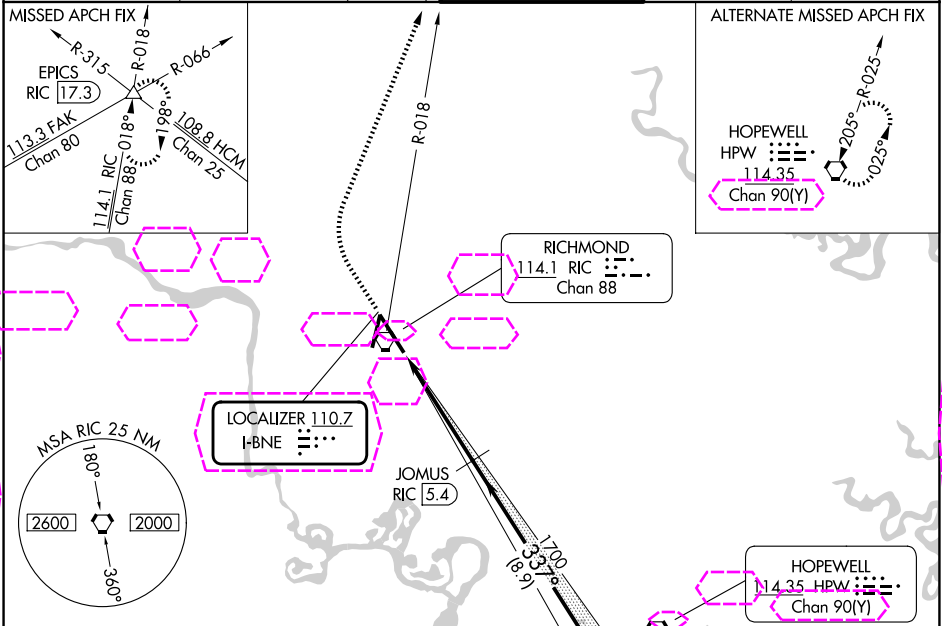
25219

LOC I-BNE <b>110.7</b>	APP CRS <b>337°</b>	Rwy Ldg <b>9003</b>
	TDZE <b>161</b>	
	Apt Elev <b>168</b>	

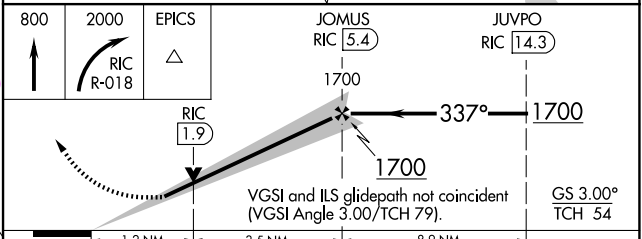
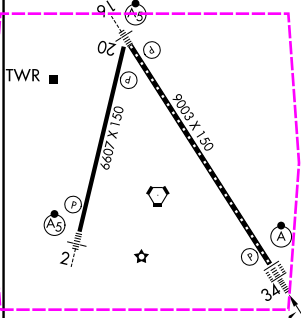
ILS or LOC RWY 34  
RICHMOND INTL (RIC)

DME required for LOC only.	ALSF-2	MISSED APPROACH: Climb to 800 then climbing right turn to 2000 on RIC VORTAC R-018 to EPICS INT/RIC 17.3 DME and hold.
For inop ALS, increase S-ILS 34 Cat E visibility to RVR 4000 and S-LOC 34 Cat E visibility to 1% SM. DME from RIC VORTAC. DME use requires simultaneous reception of I-BNE and RIC DME.		

ATIS <b>119.15 263.025</b>	POTOMAC APP CON <b>126.4 282.375</b> (001°-185°) <b>126.75 307.2</b> (186°-360°)	RICHMOND TOWER <b>121.1 257.8</b>	GND CON <b>121.9 348.6</b>	CLNC DEL <b>127.55 348.6</b>
-------------------------------	--	--------------------------------------	-------------------------------	---------------------------------



ELEV <b>168</b>	<b>D</b>	TDZE <b>161</b>
-----------------	----------	-----------------



TDZ/CL Rwy 34 HIRL Rwy 2-20 and 16-34 REIL Rwy 20	FAF to MAP 4.7 NM	CATEGORY	A	B	C	D	E
		S-ILS 34	361/18 200 (200-½)				
		S-LOC 34	620/24	459 (500-½)	620/45 459 (500-¾)		
		CIRCLING	660-1	492 (500-1)	700-1½ 532 (600-1½)	720-2 552 (600-2)	740-2 572 (600-2)
Knots	60 90 120 150 180						
Min:Sec	4:42 3:08 2:21 1:53 1:34						

RICHMOND, VIRGINIA  
Amdt 15A 15JUN23

37°30'N-77°19'W

RICHMOND INTL (RIC)  
ILS or LOC RWY 34

NE-3, 07 AUG 2025 to 04 SEP 2025

NE-3, 07 AUG 2025 to 04 SEP 2025