

RICHMOND, VIRGINIA

AL-347 (FAA)

23278

LOC I-RGJ 110.7	APP CRS 157°	Rwy Idg 9003 TDZE 167 Apt Elev 168
---------------------------	------------------------	---

ILS or LOC RWY 16

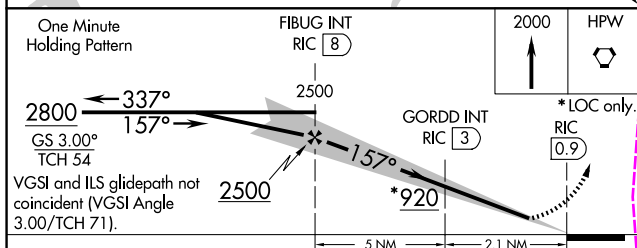
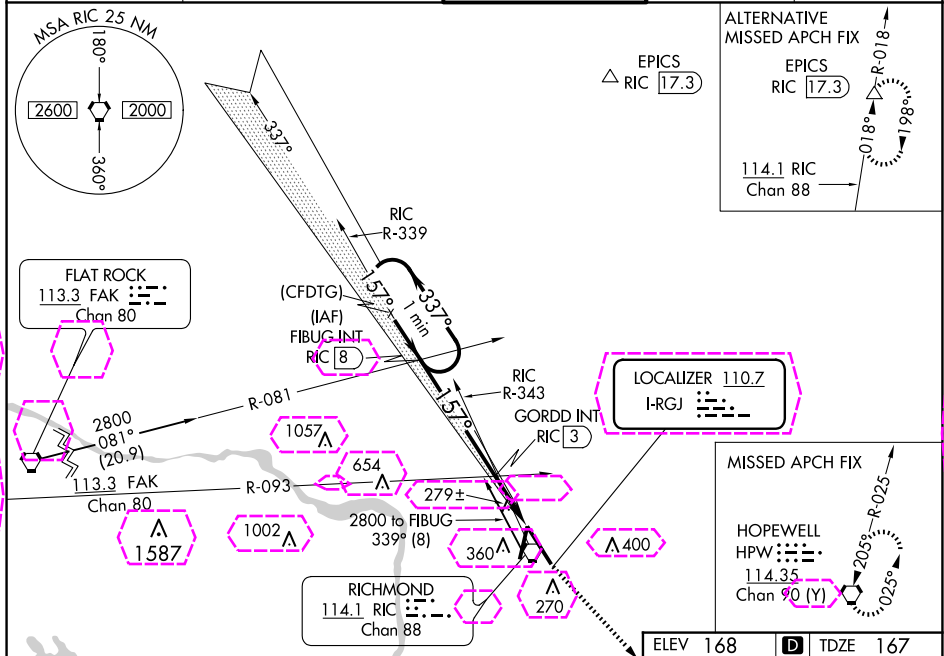
RICHMOND INTL (RIC)

⚠ For inop ALS, increase S-LOC 16 Cats C and D visibility to 2 SM. GORDD Fix Minimums: for inop ALS, increase S-LOC 16 Cats C and D visibility to 1½ SM. **RVR 1800 authorized with use of FD or AP or HUD to DA. % DME from RIC VORTAC.

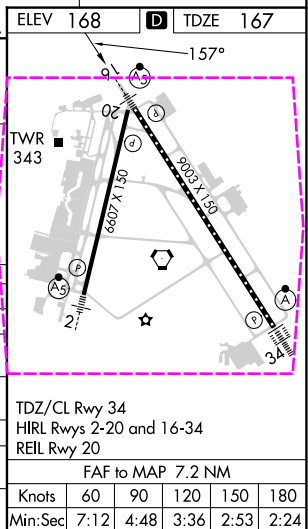
MALSR

MISSED APPROACH:
Climb to 2000 direct
HPW VORTAC and hold.

ATIS 119.15 263.025	POTOMAC APP CON 126.4 282.375 (001°-185°) 126.75 307.2 (186°-360°)	RICHMOND TOWER 121.1 257.8	GND CON 121.9 348.6	CLNC DEL 127.55 348.6
-------------------------------	--	--------------------------------------	-------------------------------	---------------------------------



CATEGORY	A	B	C	D
S-ILS 16 *		367/24	200 (200-½)	
S-LOC 16	920/24 753 (800-½)	920/40 753 (800-¾)	920-1¾	753 (800-1¾)
CIRCLING	920-1 752 (800-1)	920-1¼ 752 (800-1¼)	920-2½	752 (800-2½)
GORDD FIX MINIMUMS %				
S-LOC 16	580/24 413 (500-½)		580/40 413 (500-¾)	
CIRCLING	660-1 492 (500-1)		700-1½ 532 (600-1½)	720-2 552 (600-2)



RICHMOND, VIRGINIA
Amdt 9B 19JUL18

37°30'N-77°19'W

ILS or LOC RWY 16

RICHMOND, VIRGINIA

AL-347 (FAA)

25219

LOC I-RGJ 110.7	APP CRS 157°	Rwy Ldg TDZE Apt Elev	9003 167 168
---------------------------	------------------------	-----------------------------	---

ILS or LOC RWY 16

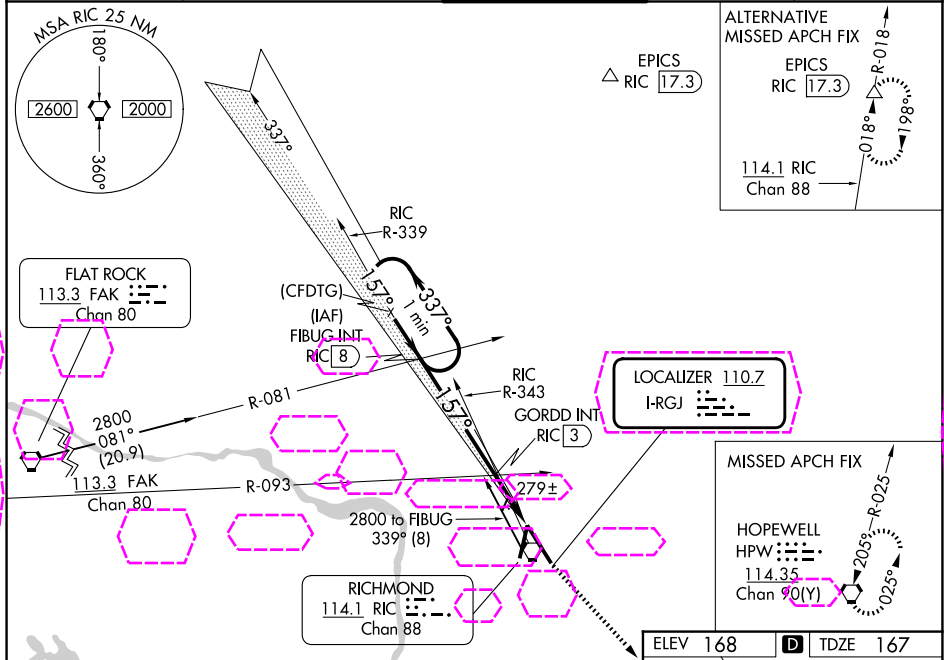
RICHMOND INTL (RIC)

⚠ For inop ALS, increase S-LOC 16 Cats C and D visibility to 2 SM. GORDD Fix Minimums: for inop ALS, increase S-LOC 16 Cats C and D visibility to 1½ SM. **RVR 1800 authorized with use of FD or AP or HUD to DA. % DME from RIC VORTAC.

MALSR

MISSED APPROACH:
Climb to 2000 direct HPW VORTAC and hold.

ATIS 119.15 263.025	POTOMAC APP CON 126.4 282.375 (001°-185°) 126.75 307.2 (186°-360°)	RICHMOND TOWER 121.1 257.8	GND CON 121.9 348.6	CLNC DEL 127.55 348.6
-------------------------------	--	--------------------------------------	-------------------------------	---------------------------------



One Minute Holding Pattern

FIBUG INT RIC 8

2000 HPW

2800

GS 3.00° TCH 54

337°

157°

2500

2500

GORDD INT RIC 3

*920

*LOC only, RIC 0.9

↑

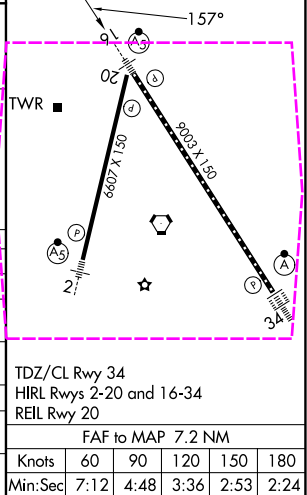
HPW

VGSI and ILS glidepath not coincident (VGSI Angle 3.00/TCH 71).

5 NM

2.1 NM

CATEGORY	A	B	C	D
S-ILS 16 **		367/24	200 (200-½)	
S-LOC 16	920/24 753 (800-½)	920/40 753 (800-¾)	920-1¾	753 (800-1¾)
CIRCLING	920-1 752 (800-1)	920-1¼ 752 (800-1¼)	920-2½	752 (800-2½)
GORDD FIX MINIMUMS %				
S-LOC 16	580/24 413 (500-½)		580/40 413 (500-¾)	
CIRCLING	660-1 492 (500-1)		700-1½ 532 (600-1½)	720-2 552 (600-2)



RICHMOND, VIRGINIA
Amdt 9B 19JUL18

37°30'N-77°19'W

ILS or LOC RWY 16

NE-3, 07 AUG 2025 to 04 SEP 2025

NE-3, 07 AUG 2025 to 04 SEP 2025