

RICHMOND, VIRGINIA

AL-347 (FAA)

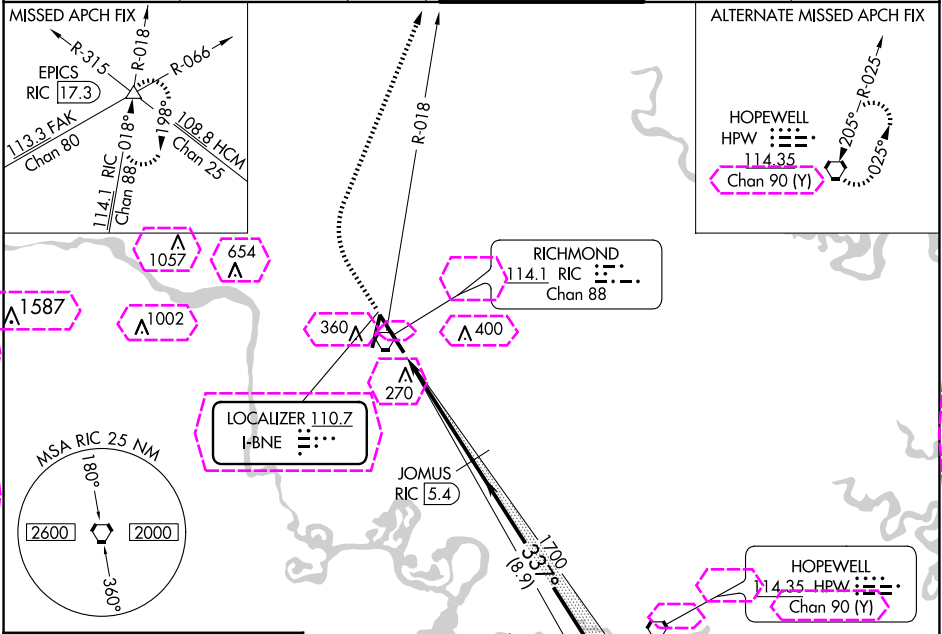
23278

LOC I-BNE 110.7	APP CRS 337°	Rwy Idg 9003 TDZE 161 Apt Elev 168
---------------------------	------------------------	---

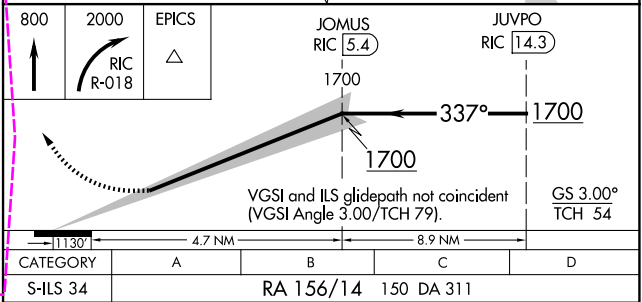
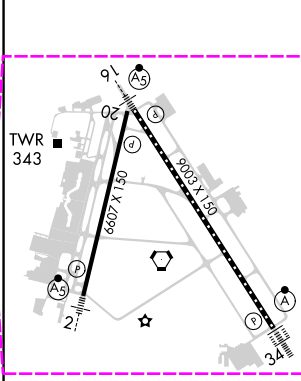
ILS RWY 34 (SA CAT I)
RICHMOND INTL (RIC)

Requires specific OPSPEC, MSPEC, or LOA approval. DME from RIC VORTAC. DME use requires simultaneous reception of I-BNE and RIC DME.	ALSIF-2 	MISSED APPROACH: Climb to 800 then climbing right turn to 2000 on RIC VORTAC R-018 to EPICS INT/RIC 17.3 DME and hold.
--	-------------	--

ATIS 119.15 263.025	POTOMAC APP CON 126.4 282.375 (001°-185°) 126.75 307.2 (186°-360°)	RICHMOND TOWER 121.1 257.8	GND CON 121.9 348.6	CLNC DEL 127.55 348.6
-------------------------------	--	--------------------------------------	-------------------------------	---------------------------------



ELEV 168	D	TDZE 161
-----------------	----------	-----------------



TDZ/CL Rwy 34 HIRL Rwy 2-20 and 16-34 REIL Rwy 20	SA CATEGORY I ILS - SPECIAL AIRCREW & AIRCRAFT CERTIFICATION REQUIRED
---	--

RICHMOND, VIRGINIA
Amdt 15A 15JUN23

37°30'N-77°19'W

RICHMOND INTL (RIC)
ILS RWY 34 (SA CAT I)

RICHMOND, VIRGINIA

AL-347 (FAA)

25219

LOC I-BNE 110.7	APP CRS 337°	Rwy Ldg TDZE 161 Apt Elev 168
---------------------------	------------------------	---

ILS RWY 34 (SA CAT I)

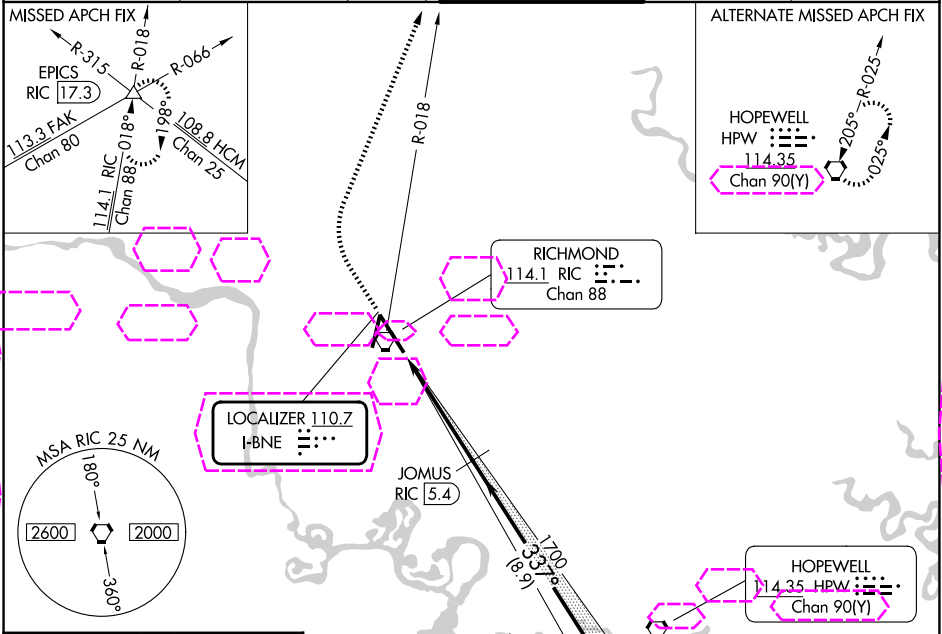
RICHMOND INTL (RIC)

⚠ Requires specific OPSPEC, MSPEC, or LOA approval. DME from RIC VORTAC. DME use requires simultaneous reception of I-BNE and RIC DME.

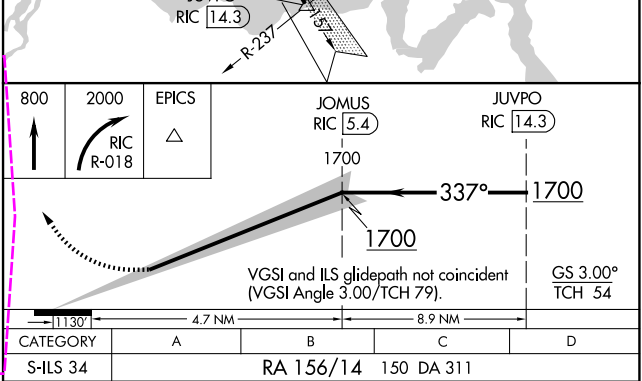
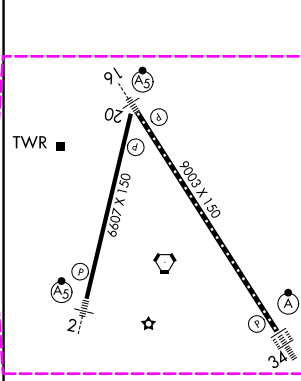
ALSIF-2

MISSED APPROACH: Climb to 800 then climbing right turn to 2000 on RIC VORTAC R-018 to EPICS INT/RIC 17.3 DME and hold.

ATIS 119.15 263.025	POTOMAC APP CON 126.4 282.375 (001°-185°) 126.75 307.2 (186°-360°)	RICHMOND TOWER 121.1 257.8	GND CON 121.9 348.6	CLNC DEL 127.55 348.6
-------------------------------	--	--------------------------------------	-------------------------------	---------------------------------



ELEV 168	D	TDZE 161
----------	---	----------



SA CATEGORY I ILS - SPECIAL AIRCREW & AIRCRAFT CERTIFICATION REQUIRED

RICHMOND, VIRGINIA
Amdt 15A 15JUN23

37°30'N-77°19'W

RICHMOND INTL (RIC)
ILS RWY 34 (SA CAT I)

NE-3, 07 AUG 2025 to 04 SEP 2025

NE-3, 07 AUG 2025 to 04 SEP 2025