

RICHMOND, VIRGINIA

AL-347 (FAA)

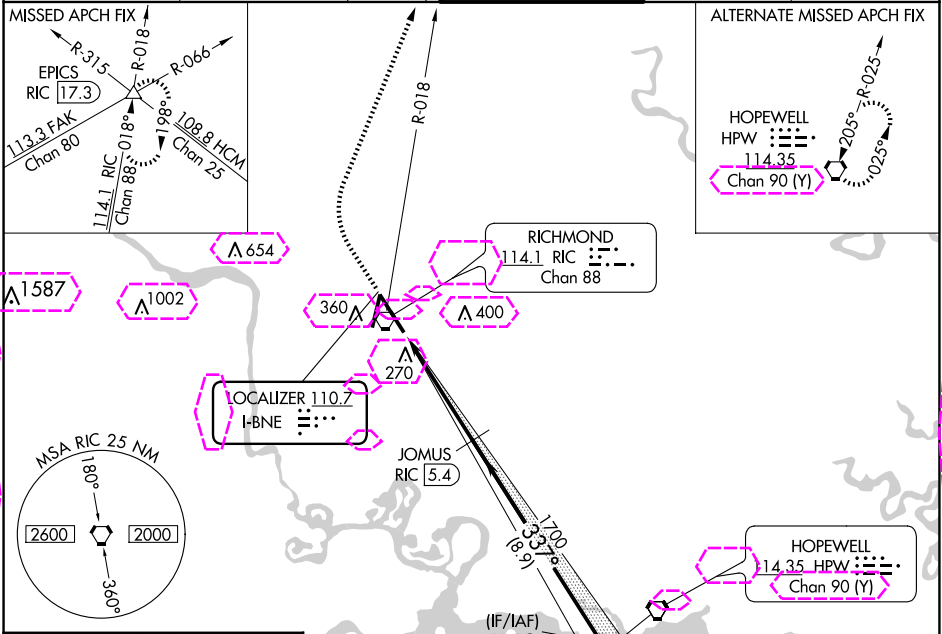
23278

LOC I-BNE 110.7	APP CRS 337°	Rwy Idg 9003 TDZE 161 Apt Elev 168
---------------------------	------------------------	---

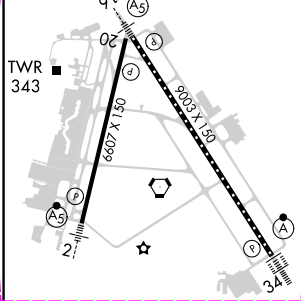
ILS RWY 34 (CAT II & III)
RICHMOND INTL (RIC)

▼ DME from RIC VORTAC. DME use requires simultaneous reception of I-BNE and RIC DME. CAT II: RVR 1000 authorized with specific OPSPEC, MSPEC, or LOA approval and use of autoland or HUD to touchdown.	ALSIF-2 	MISSED APPROACH: Climb to 800 then climbing right turn to 2000 on RIC VORTAC R-018 to EPICS INT/ RIC 17.3 DME and hold.
--	-------------	---

ATIS 119.15 263.025	POTOMAC APP CON 126.4 282.375 (001°-185°) 126.75 307.2 (186°-360°)	RICHMOND TOWER 121.1 257.8	GND CON 121.9 348.6	CLNC DEL 127.55 348.6
-------------------------------	--	--------------------------------------	-------------------------------	---------------------------------



ELEV 168	D	TDZE 161
-----------------	----------	-----------------



800	2000	EPICS RIC R-018	JOMUS RIC 5.4	JUVPO RIC 14.3
VGSI and ILS glidepath not coincident (VGSI Angle 3.00/TCH 79).				
GS 3.00° TCH 54				
CATEGORY	A	B	C	D
S-ILS 34	CAT II RA 101/12 100 DA 261			
S-ILS 34	CAT III RVR 07			

TDZ/CL Rwy 34
HIRL Rwy 2-20 and 16-34
REIL Rwy 20

CATEGORY II & III ILS-SPECIAL AIRCREW
& AIRCRAFT CERTIFICATION REQUIRED

RICHMOND, VIRGINIA
Amdt 15A 15JUN23

37°30'N-77°19'W

RICHMOND INTL (RIC)
ILS RWY 34 (CAT II & III)

NE-3, 10 JUL 2025 to 07 AUG 2025

NE-3, 10 JUL 2025 to 07 AUG 2025

