

25107

AIRPORT DIAGRAM

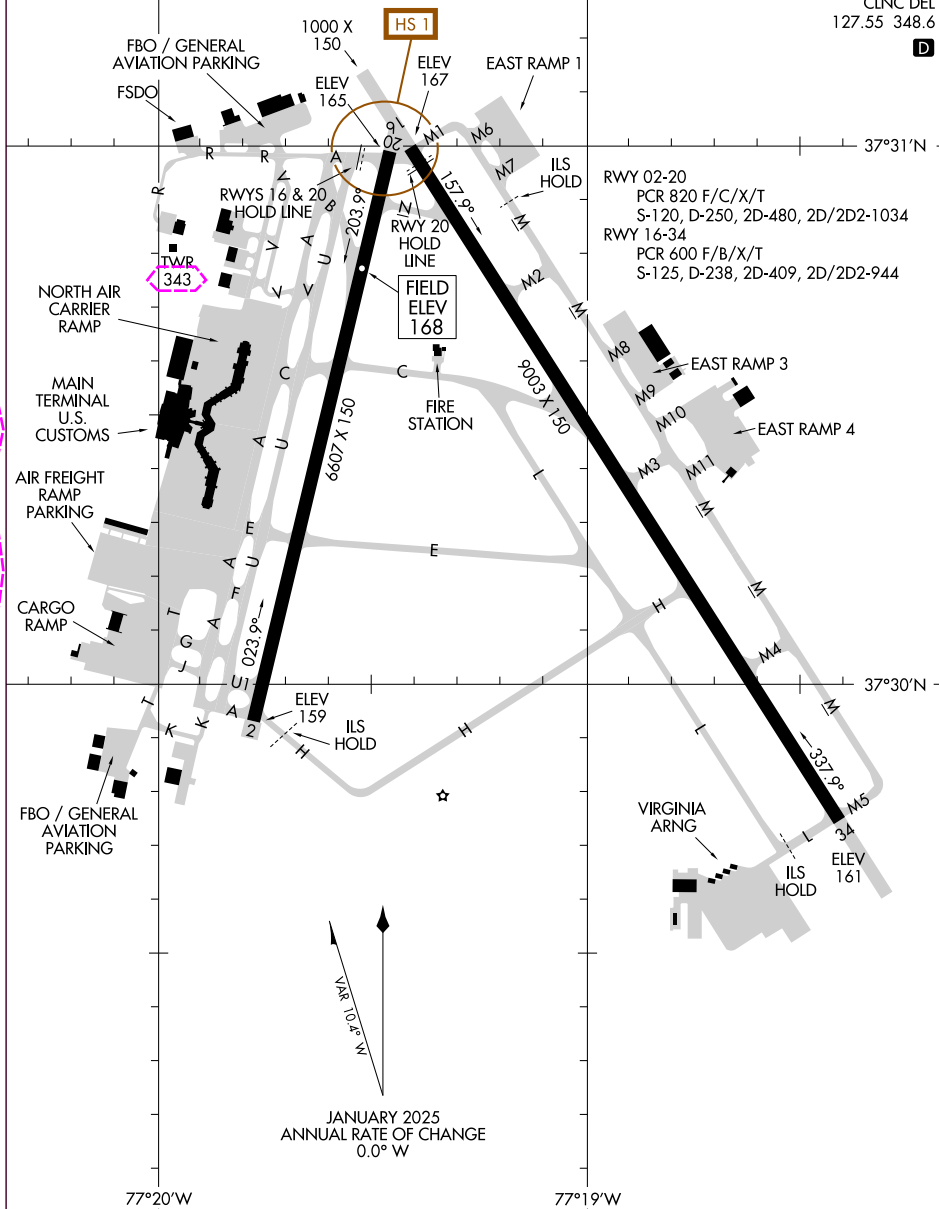
AL-347 (FAA)

RICHMOND INTL (RIC)
 RICHMOND, VIRGINIA

ATIS
 119.15 263.025
 RICHMOND TOWER
 121.1 257.8
 GND CON
 121.9 348.6
 CLNC DEL
 127.55 348.6

D

CAUTION: BE ALERT TO RUNWAY CROSSING CLEARANCES.
 READBACK OF ALL RUNWAY HOLDING INSTRUCTIONS IS REQUIRED.



NE-3, 10 JUL 2025 to 07 AUG 2025

AIRPORT DIAGRAM

25107

RICHMOND, VIRGINIA
RICHMOND INTL (RIC)

25219

AIRPORT DIAGRAM

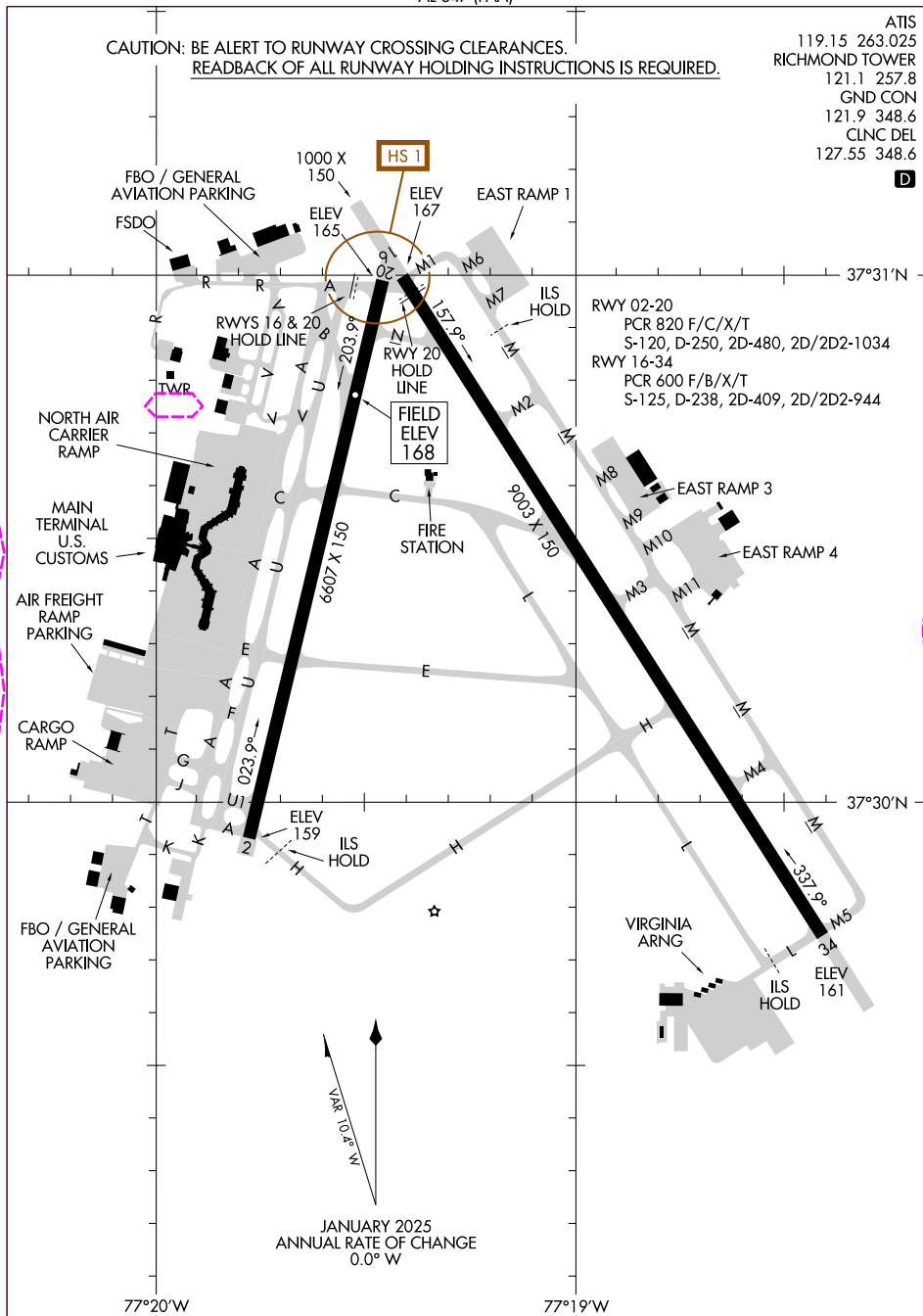
AL-347 (FAA)

RICHMOND INTL (RIC)
RICHMOND, VIRGINIACAUTION: BE ALERT TO RUNWAY CROSSING CLEARANCES.
READBACK OF ALL RUNWAY HOLDING INSTRUCTIONS IS REQUIRED.ATIS
119.15 263.025
RICHMOND TOWER
121.1 257.8
GND CON
121.9 348.6
CLNC DEL
127.55 348.6

D

NE-3, 07 AUG 2025 to 04 SEP 2025

NE-3, 07 AUG 2025 to 04 SEP 2025



AIRPORT DIAGRAM

25219

RICHMOND, VIRGINIA
RICHMOND INTL (RIC)