

REDMOND, OREGON

AL-345 (FAA)

25163

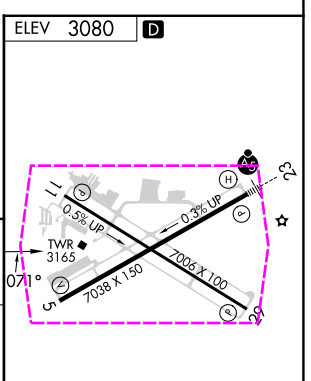
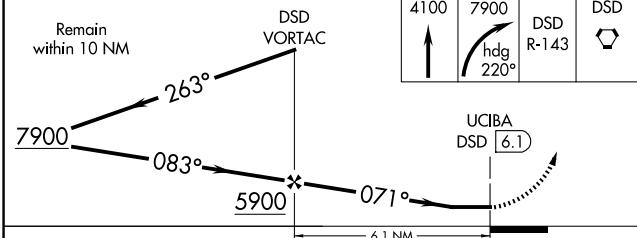
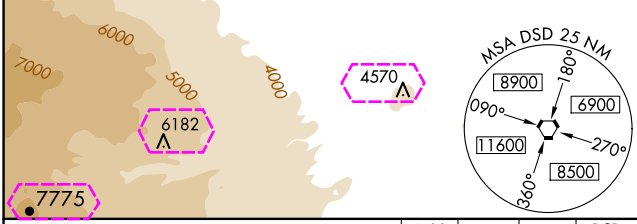
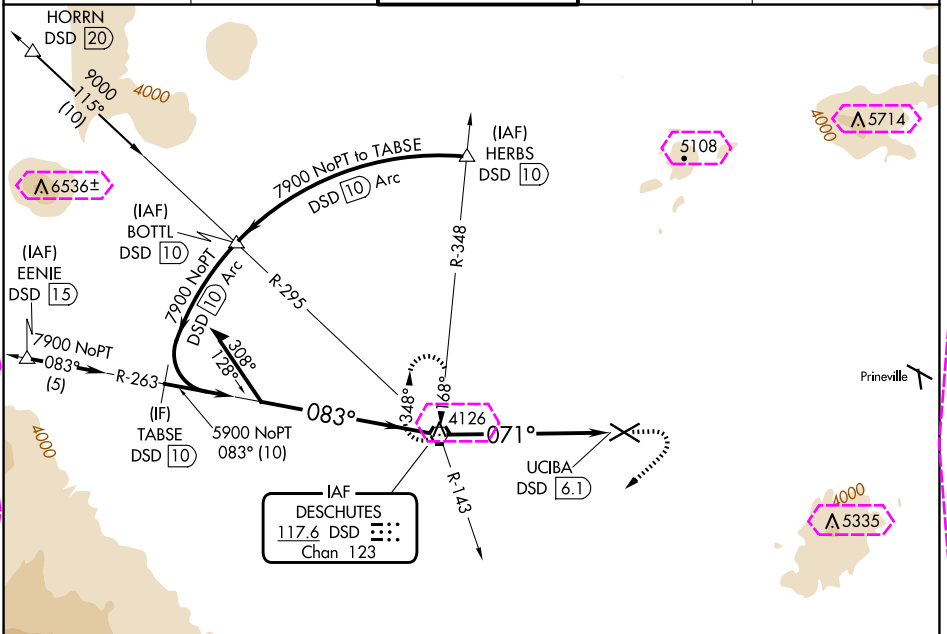
VORTAC DSD 117.6 Chan 123	APP CRS 071°	Rwy Ldg TDZE Apt Elev N/A N/A 3080
---	------------------------	--


VOR-A
ROBERTS FLD (RDM)

When local altimeter setting not received, use Bend altimeter setting and increase all MDA 80 feet and visibility Cats C and D ¼ mile.

MISSED APPROACH: Climb to 4100 then climbing right turn to 7900 on heading 220° and on DSD VORTAC R-143 to DSD VORTAC and hold.

ATIS 119.025	SEATTLE CENTER 126.15 269.475	REDMOND TOWER★ 124.5 (CTAF) 0 256.8	GND CON 121.8	UNICOM 122.95
------------------------	---	---	-------------------------	-------------------------



CATEGORY		A	B	C	D	FAF to MAP 6.1 NM					
 CIRCLING	3660-1	580 (600-1)	3660-1½ 580 (600-1½)	3760-2¼ 680 (700-2¼)	Knots	60	90	120	150	180	
					Min:Sec	6:06	4:04	3:03	2:26	2:02	

REDMOND, OREGON
Amdt 6 24JUL14

44°15'N-121°09'W

ROBERTS FLD (RDM)
VOR-A

NW-1, 10 JUL 2025 to 07 AUG 2025

NW-1, 10 JUL 2025 to 07 AUG 2025

VORTAC DSD 117.6 Chan 123	APP CRS 071°	Rwy Ldg TDZE Apt Elev	N/A N/A 3080
---	------------------------	-----------------------------	---

VOR-A
ROBERTS FLD (RDM)

When local altimeter setting not received, use Bend altimeter setting and increase all MDA 80 feet and visibility Cats C and D ¼ mile.

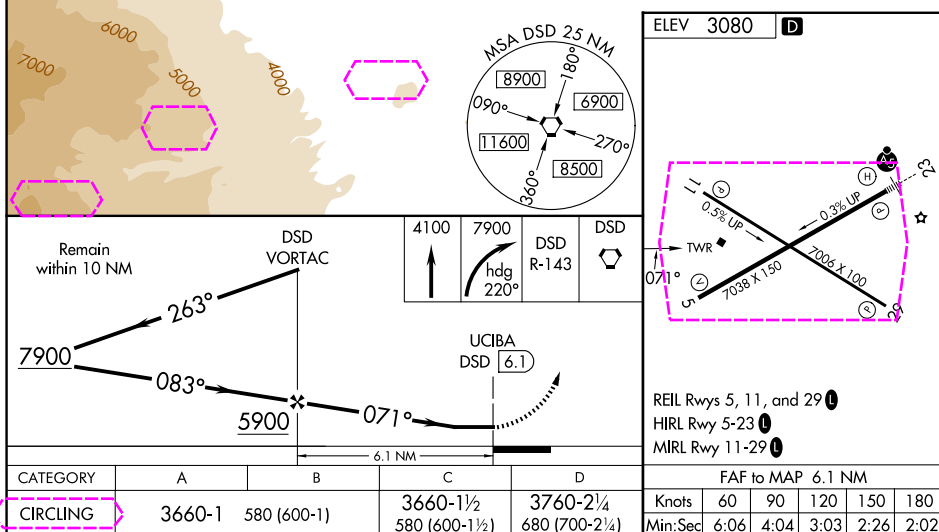
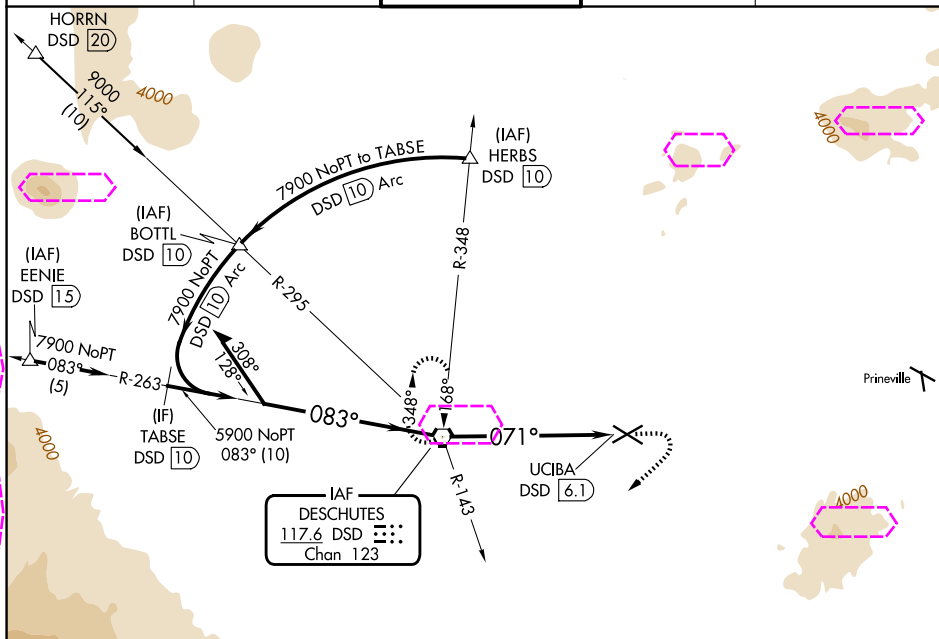
MISSED APPROACH: Climb to 4100 then climbing right turn to 7900 on heading 220° and on DSD VORTAC R-143 to DSD VORTAC and hold.

ATIS
119.025

SEATTLE CENTER
126.15 269,475

REDMOND TOWER★
124.5 (CTAF) **L** 256.8

GND CON
121.8

UNICOM
122.95

REDMOND, OREGON
Amdt 6 24JUL14

ROBERTS FLD (RDM)
VOR-A

44°15'N-121°09'W