

REDMOND, OREGON

AL-345 (FAA)

25163

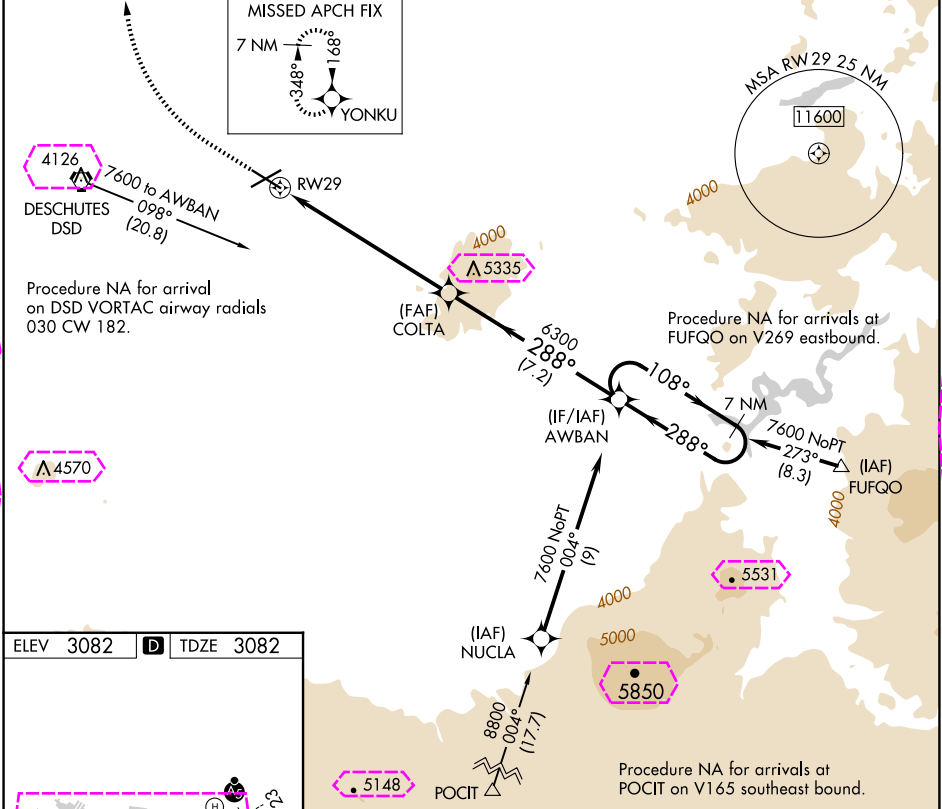
WAAS CH 90214 W29A	APP CRS 288°	Rwy Ldg TDZE Apt Elev	7006 3082 3082
--	------------------------	-----------------------------	---

RNAV (GPS) Z RWY 29

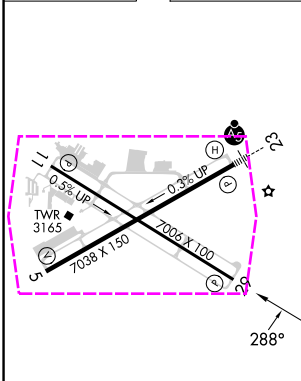
ROBERTS FLD (RDM)

RNP APCH-GPS.	MISSED APPROACH: Climb to 4000 then climbing right turn to 7000 direct YONKU and hold, continue climb-in-hold to 7000.
---------------	--

ATIS 119.025	SEATTLE CENTER 126.15 269.475	REDMOND TOWER★ 124.5 (CTAF) 0 256.8	GND CON 121.8	UNICOM 122.95
------------------------	---	---	-------------------------	-------------------------



ELEV 3082	D	TDZE 3082
-----------	---	-----------



REIL Rwy 5, 11, and 29
HIRL Rwy 5-23
MIRL Rwy 11-29

4000	7000	YONKU	VGSI and RNAV glidepath not coincident (VGSI Angle 3.00/TCH 50).	7 NM Holding Pattern
AWBAN				
COLTA				
RW29				
6300				
288°				
108°				
7600				
GP 4.20° TCH 43				
CATEGORY	A	B	C	D
LPV DA	3368-1	286 (300-1)	NA	
LNAV/VNAV DA	3368-1	286 (300-1)	NA	

REDMOND, OREGON
Amdt 1B 16JUN22

44°15'N-121°09'W

RNAV (GPS) Z RWY 29

ROBERTS FLD (RDM)

NW-1, 10 JUL 2025 to 07 AUG 2025

NW-1, 10 JUL 2025 to 07 AUG 2025

REDMOND, OREGON

AL-345 (FAA)

25219

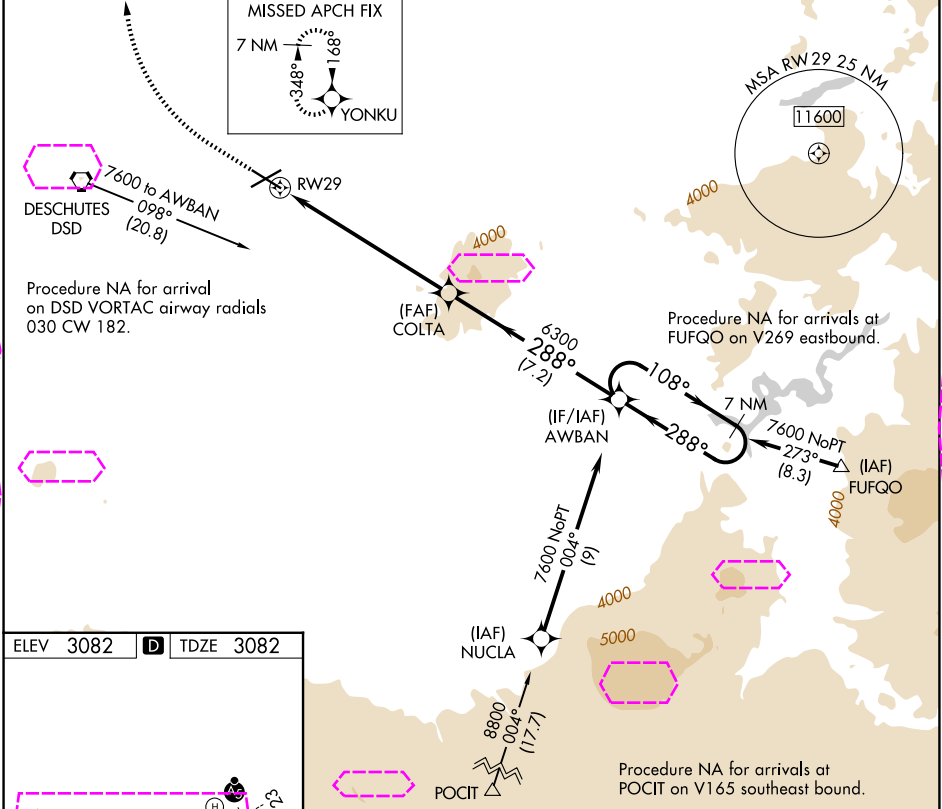
WAAS CH 90214 W29A	APP CRS 288°	Rwy Ldg TDZE Apt Elev 7006 3082 3082
--	------------------------	--

RNAV (GPS) Z RWY 29

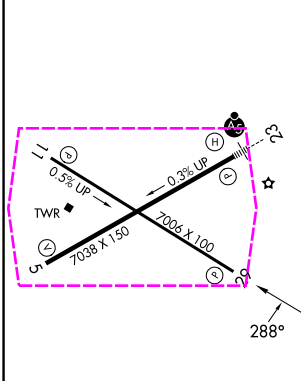
ROBERTS FLD (RDM)

RNP APCH-GPS.	MISSED APPROACH: Climb to 4000 then climbing right turn to 7000 direct YONKU and hold, continue climb-in-hold to 7000.
---------------	--

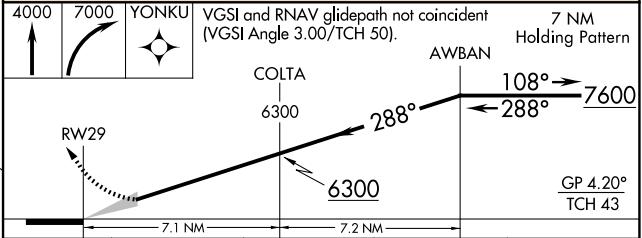
ATIS 119.025	SEATTLE CENTER 126.15 269.475	REDMOND TOWER★ 124.5 (CTAF) 0 256.8	GND CON 121.8	UNICOM 122.95
------------------------	---	---	-------------------------	-------------------------



ELEV 3082	D	TDZE 3082
-----------	---	-----------



REIL Rwy 5, 11, and 29
HIRL Rwy 5-23
MIRL Rwy 11-29



CATEGORY	A	B	C	D
LPV DA	3368-1	286 (300-1)	NA	NA
LNAV/VNAV DA	3368-1	286 (300-1)	NA	NA

REDMOND, OREGON
Amdt 1B 16JUN22

44°15'N-121°09'W

RNAV (GPS) Z RWY 29

NW-1, 07 AUG 2025 to 04 SEP 2025

NW-1, 07 AUG 2025 to 04 SEP 2025