

REDMOND, OREGON

AL-345 (FAA)

25163

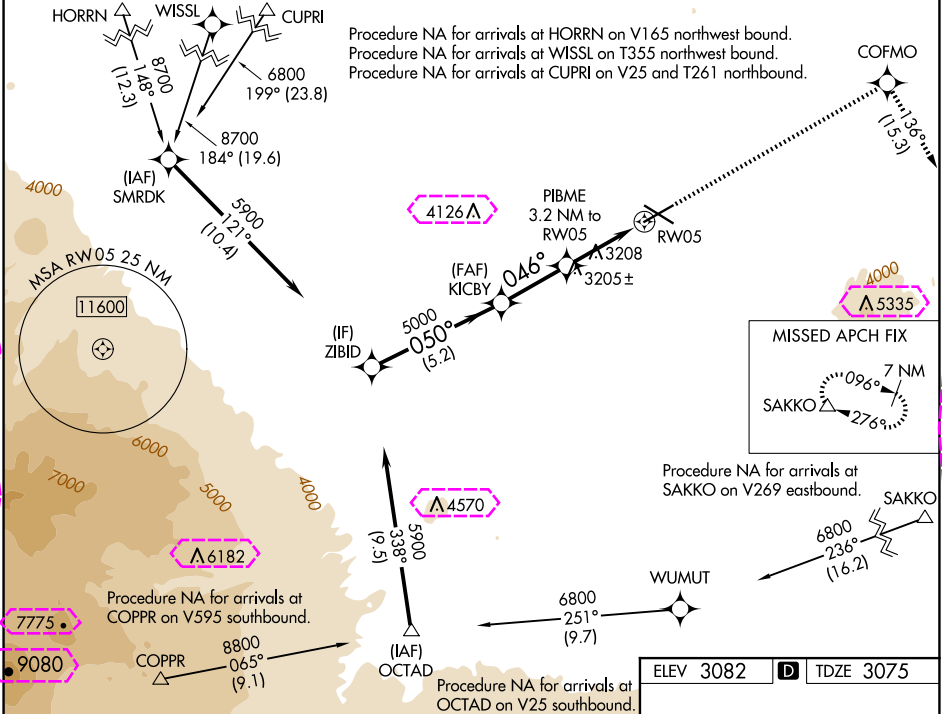
WAAS CH 70514 W05A	APP CRS 046°	Rwy Ldg TDZE Apt Elev 7038 3075 3082
--	------------------------	--

RNAV (GPS) Y RWY 5

ROBERTS FLD (RDM)

RNP APCH.	MISSED APPROACH: Climb to 9500 direct COFMO and on track 136° to SAKKO and hold, continue climb-in-hold to 9500.
17°C	For uncompensated Baro-VNAV systems, LNAV/VNAV NA below -22°C or above 54°C.

ATIS 119.025	SEATTLE CENTER 126.15 269.475	REDMOND TOWER ★ 124.5 (CTAF) 0 256.8	GND CON 121.8	UNICOM 122.95
------------------------	---	--	-------------------------	-------------------------



ZIBID		KICBY		PIBME		COFMO		SAKKO	
5900		5000		3208		9500		tr 136°	
GP 3.00°		046°		3.2 NM to RW05		* 1.2 NM to RW05		* LNAV only	
TCH 50		* 4140		5.2 NM		2.7 NM		2 NM	
CATEGORY		A		B		C		D	
LPV DA		3275-3/4		200 (200-3/4)					
LNAV/VNAV DA		3347-7/8		272 (300-7/8)					
LNAV MDA		3520-1		445 (500-1)		3520-1 3/8		445 (500-1 3/8)	
CIRCLING		3540-1		3560-1		3640-1 1/2		3740-2	
		458 (500-1)		478 (500-1)		558 (600-1 1/2)		658 (700-2)	

ELEV 3082 TDZE 3075

REIL Rwy 5, 11, and 29

HIRL Rwy 5-23

MIRL Rwy 11-29

REDMOND, OREGON
Amdt 3A 10SEP20

44°15'N-121°09'W

RNAV (GPS) Y RWY 5

NW-1, 10 JUL 2025 to 07 AUG 2025

NW-1, 10 JUL 2025 to 07 AUG 2025

REDMOND, OREGON

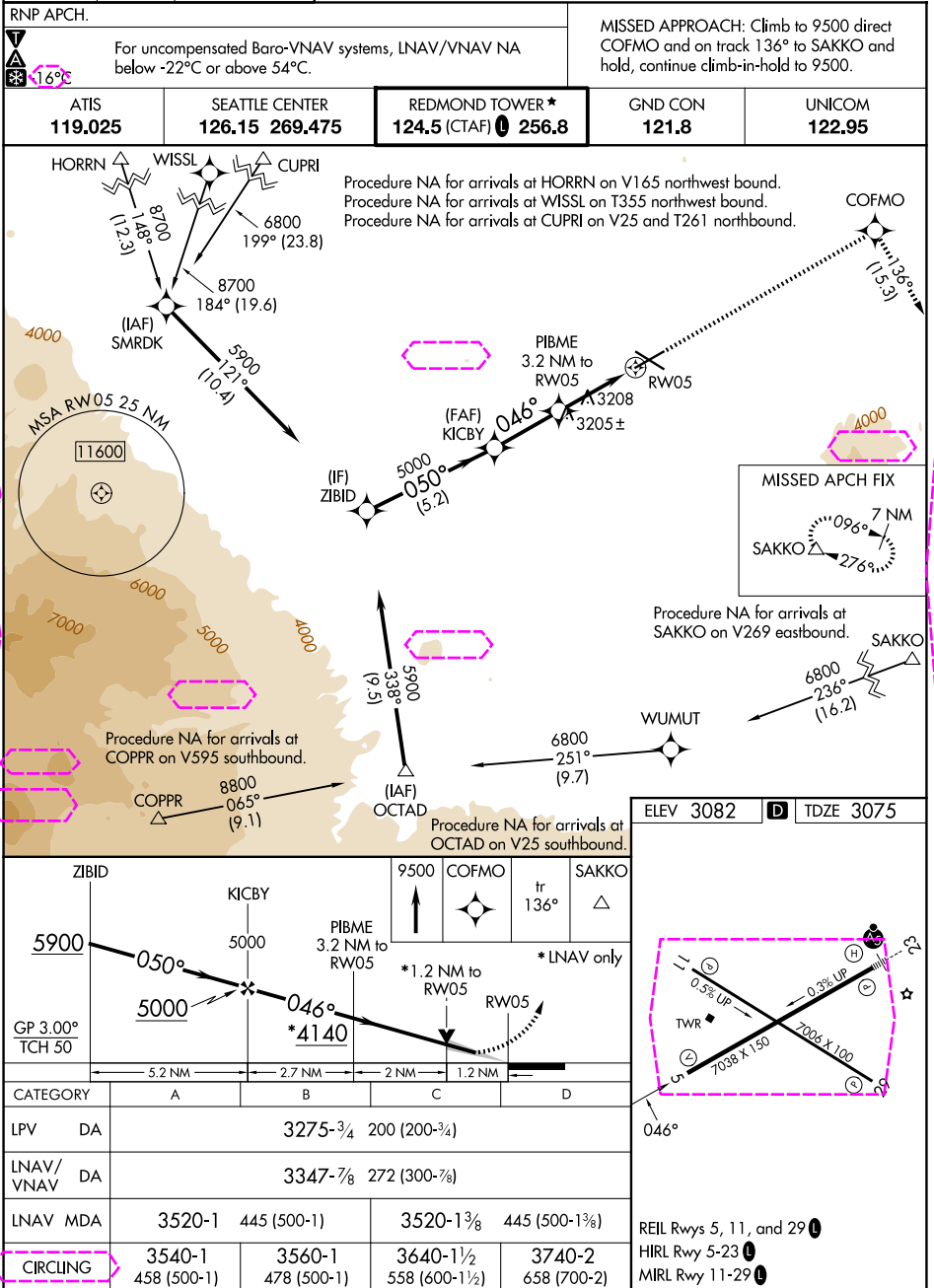
AL-345 (FAA)

25219

WAAS CH 70514 W05A	APP CRS 046°	Rwy Ldg TDZE Apt Elev	7038 3075 3082
--	------------------------	-----------------------------	---

RNAV (GPS) Y RWY 5

ROBERTS FLD (RDM)



NW-1, 07 AUG 2025 to 04 SEP 2025

NW-1, 07 AUG 2025 to 04 SEP 2025

REDMOND, OREGON
Amdt 3A 10SEP20

44°15'N-121°09'W

RNAV (GPS) Y RWY 5

ROBERTS FLD (RDM)