

REDMOND, OREGON

AL-345 (FAA)

25163

APP CRS	Rwy Ldg	7006
288°	TDZE	3080
	Apt Elev	3080

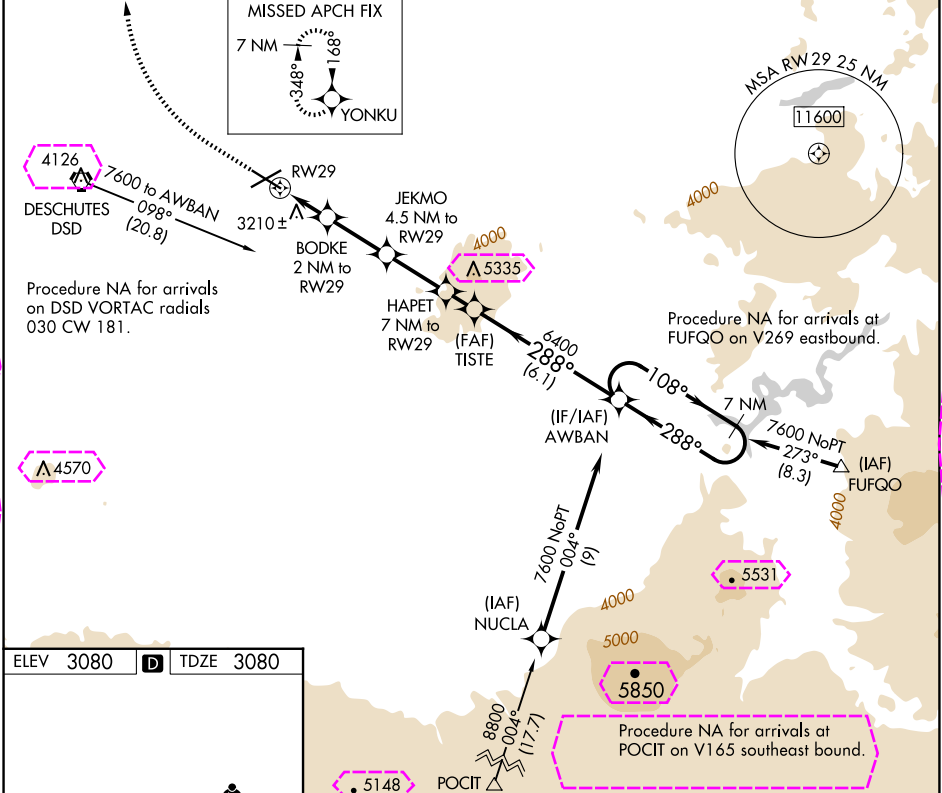
# RNAV (GPS) Y RWY 29

ROBERTS FLD (RDM)

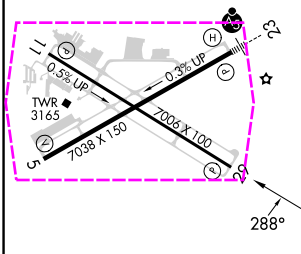
RNP APCH.  
17°C

MISSED APPROACH: Climb to 4000 then climbing right turn to 7000 direct YONKU and hold, continue climb-in-hold to 7000.

ATIS 119.025	SEATTLE CENTER 126.15 269.475	REDMOND TOWER★ 124.5 (CTAF) 256.8	GND CON 121.8	UNICOM 122.95
-----------------	----------------------------------	--------------------------------------	------------------	------------------



ELEV 3080	TDZE 3080
-----------	-----------



REIL Rwy 5, 11, and 29  
HIRL Rwy 5-23  
MIRL Rwy 11-29

	YONKU	JETMO	TISTE	AWBAN	7 NM Holding Pattern
	BODKE 2 NM to RW29	4.5 NM to RW29	7 NM to RW29		
	1.3 NM to RW29	2.5 NM to RW29	1.2 NM to RW29	6.1 NM to RW29	
3900	4900	5920	6400	7600	
3.76° TCH 43					
288°	288°	108°	288°	108°	
VGSI and descent angles not coincident (VGSI Angle 3.00/TCH 50)					
1.3 NM	0.7	2.5 NM	2.5 NM	1.2 NM	6.1 NM
CATEGORY	A	B	C	D	
LNAV MDA	3560-1	480 (500-1)	3560-1 3/8 480 (500-1 3/8)	NA	
CIRCLING	3560-1	480 (500-1)	3640-1 1/2 560 (600-1 1/2)	NA	

REDMOND, OREGON  
Amdt 2B 28FEB19

44°15'N-121°09'W

# RNAV (GPS) Y RWY 29

NW-1, 10 JUL 2025 to 07 AUG 2025

NW-1, 10 JUL 2025 to 07 AUG 2025

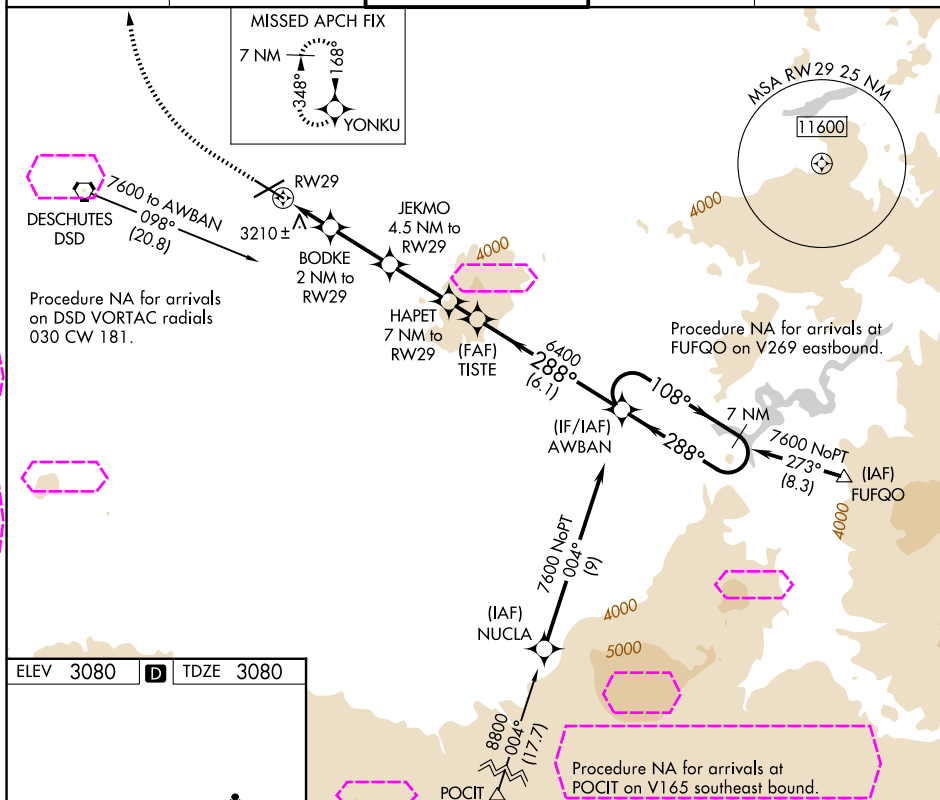
ROBERTS FLD (RDM)

APP CRS <b>288°</b>	Rwy Ldg TDZE Apt Elev	<b>7006</b> <b>3080</b> <b>3080</b>
------------------------	-----------------------------	---

RNP APCH.

**MISSED APPROACH:** Climb to 4000 then climbing right turn to 7000 direct YONKU and hold, continue climb-in-hold to 7000.

ATIS <b>119.025</b>	SEATTLE CENTER <b>126.15 269.475</b>	REDMOND TOWER★ <b>124.5 (CTAF) 0 256.8</b>	GND CON <b>121.8</b>	UNICOM <b>122.95</b>
------------------------	---	---	-------------------------	-------------------------



ELEV 3080	<b>D</b>	TDZE 3080
-----------	----------	-----------

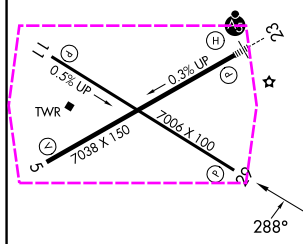


Diagram illustrating a VOR/DME station layout for YONKUN. The station is located at the top left. Key points and distances are marked:

- 4000 (Distance marker)
- 7000 (Distance marker)
- YONKUN (Station symbol)
- JEKMO (4.5 NM to RW29)
- BODKE (2 NM to RW29)
- 1.3 NM to RW29
- 4900 (Distance marker)
- 5920 (Distance marker)
- 6400 (Distance marker)
- Angles:  $3.76^\circ$  TCH 43,  $288^\circ$ ,  $108^\circ$ ,  $288^\circ$
- Note: VGSI and descent angles not coincident (VGSI Angle 3.00/TCH 50)

CATEGORY	A	B	C	D
LNAV MDA	3560-1	480 (500-1)	3560-1 $\frac{3}{8}$ 480 (500-1 $\frac{3}{8}$ )	NA
CIRCLING	3560-1	480 (500-1)	3640-1 $\frac{1}{2}$ 560 (600-1 $\frac{1}{2}$ )	NA

REIL Rwy 5, 11, and 29 **L**HIRL Rwy 5-23 **L**

MIRL Rwy 11-29 (

REDMOND, OREGON

Amdt 2B 28FEB19

ROBERTS FLD (RDM)

44°15'N-121°09'W

## RNAV (GPS) Y RWY 29

NW-1, 07 AUG 2025 to 04 SEP 2025

NW-1, 07 AUG 2025 to 04 SEP 2025