

REDMOND, OREGON

AL-345 (FAA)

25163

WAAS CH 82514 W23A	APP CRS 226°	Rwy Ldg TDZE Apt Elev	7031 3067 3080
--	------------------------	-----------------------------	---

RNAV (GPS) Y RWY 23

ROBERTS FLD (RDM)

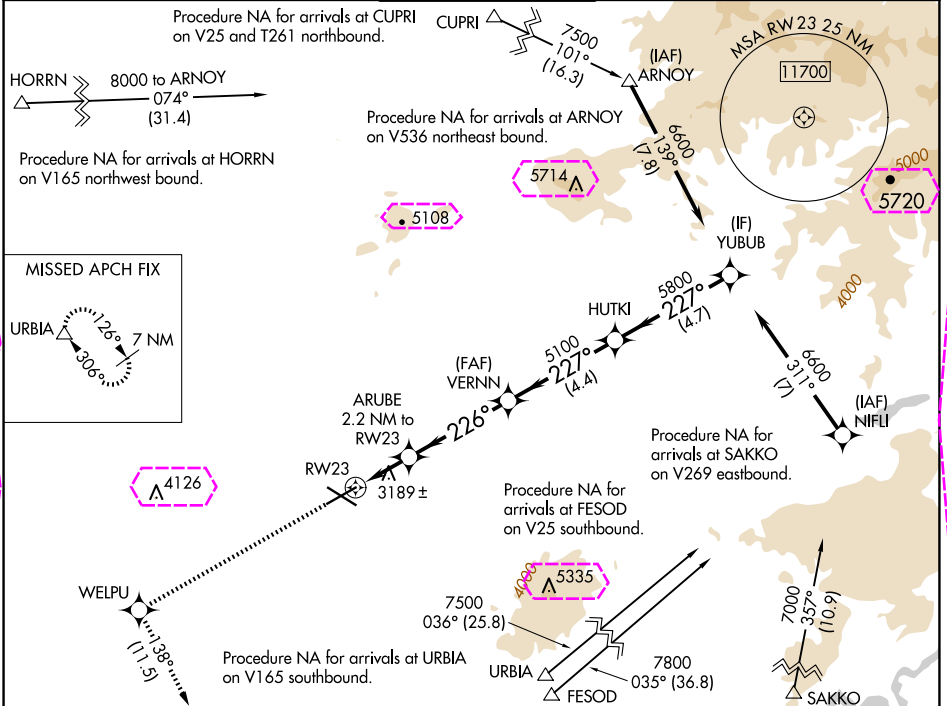
⚠ For uncompensated Baro-VNAV systems, LNAV/VNAV NA below -20°C (-4°F) or above 53°C (128°F).
⚠ DME/DME RNP-0.3 NA. For inop ALS, increase LNAV/VNAV all Cats visibility to ¾ SM and LNAV Cat C/D visibility to 1 SM.

MALSR

⚠

MISSED APPROACH: Climb to 8500 direct WELPU and on track 138° to URBIA and hold, continue climb-in-hold to 8500.

ATIS 119.025	SEATTLE CENTER 126.15 269.475	REDMOND TOWER★ 124.5 (CTAF) 0 256.8	GND CON 121.8	UNICOM 122.95
------------------------	---	---	-------------------------	-------------------------



ELEV 3080	D	TDZE 3067	8500	WELPU	tr 138°	URBIA	VGSI and RNAV glidepath not coincident (VGSI Angle 3.00/TCH 51).	YUBUB
-----------	----------	-----------	------	-------	---------	-------	--	-------

***LNAV only**

***1.1 NM to RW23**

***3800**

ARUBE 2.2 NM to RW23

VERNN 5100

HUTKI 5800

YUBUB 6600

GP 3.00° TCH 47

CATEGORY	A	B	C	D
LPV DA	3267-½ 200 (200-½)			
LNAV/VNAV DA	3383-⅝ 316 (400-⅝)			
LNAV MDA	3440-½ 373 (400-½)		3440-¾ 373 (400-¾)	
CIRCLING	3540-1 460 (500-1)	3560-1 480 (500-1)	3640-1½ 560 (600-1½)	3760-2¼ 680 (700-2¼)

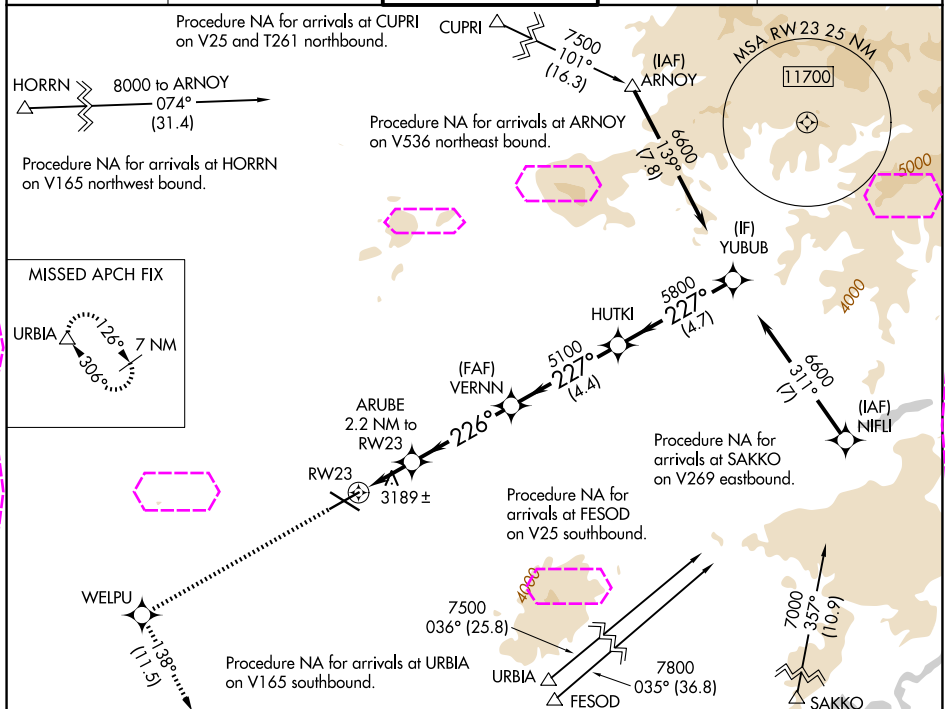
RNAV (GPS) Y RWY 23

ROBERTS FLD (RDM)

WAAS CH 82514 W23A	APP CRS 226°	Rwy Ldg TDZE Apt Elev	7031 3067 3080
--	------------------------	-----------------------------	---

	<p>For uncompensated Baro-VNAV systems, LNAV/VNAV NA below -20°C (-4°F) or above 53°C (128°F). DME/DME RNP-0.3 NA. For inop ALS, increase LNAV/VNAV all Cats visibility to ½ SM and LNAV Cat C/D visibility to 1 SM.</p>	<p>MALSR</p>	<p>MISSED APPROACH: Climb to 8500 direct WELPU and on track 138° to URBIA and hold, continue climb-in-hold to 8500.</p>
--	---	--------------	---

ATIS 119,025	SEATTLE CENTER 126.15 269,475	REDMOND TOWER* 124.5 (CTAF) 0 256.8	GND CON 121.8	UNICOM 122.95
-----------------	----------------------------------	--	------------------	------------------



ELEV 3080 **D** TDZE 3067

8500 WELPU tr 138° URBIA VGS1 and RNAV glidepath not coincident (VGS1 Angle 3.00/TCH 51.)

YUBUB

VERNN HUTKI

ARUBE 2.2 NM to RW23

RW23

5100

226°

227°

227°

6600

5800

3800

5100

1.1 NM 1.1 NM 4.1 NM 4.4 NM 4.7 NM

GP 3.00° TCH 47

226°

0.5% UP

0.3% UP

TWR

7038 x 150

7006 x 100

REIL Rwy 5, 11, and 29

HIRL Rwy 5-23

MIRL Rwy 11-29

CIRCLING

CATEGORY	A	B	C	D
LPV DA	3267-1/2 200 (200-1/2)			
RNAV/VNAV DA	3383-5/8 316 (400-5/8)			
RNAV MDA	3440-1/2 373 (400-1/2)		3440-3/4 373 (400-3/4)	
CIRCLING	3540-1 460 (500-1)	3560-1 480 (500-1)	3640-1/2 560 (600-1/2)	3760-2 1/4 680 (700-2 1/4)

REDMOND, OREGON

Amdt 1A 01FEB18

ROBERTS FLD (RDM)

44°15'N-121°09'W

RNAV (GPS) Y RWY 23

NW-1, 07 AUG 2025 to 04 SEP 2025

NW-1, 07 AUG 2025 to 04 SEP 2025