

REDMOND, OREGON

AL-345 (FAA)

25163

APP CRS	Rwy Ldg	7038
046°	TDZE	3075
	Apt Elev	3082

RNAV (RNP) Z RWY 5

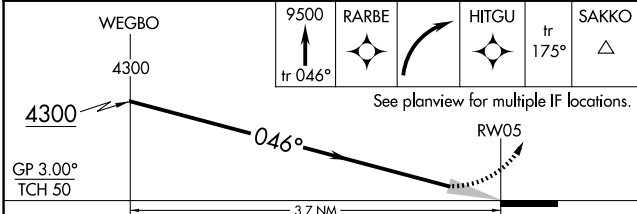
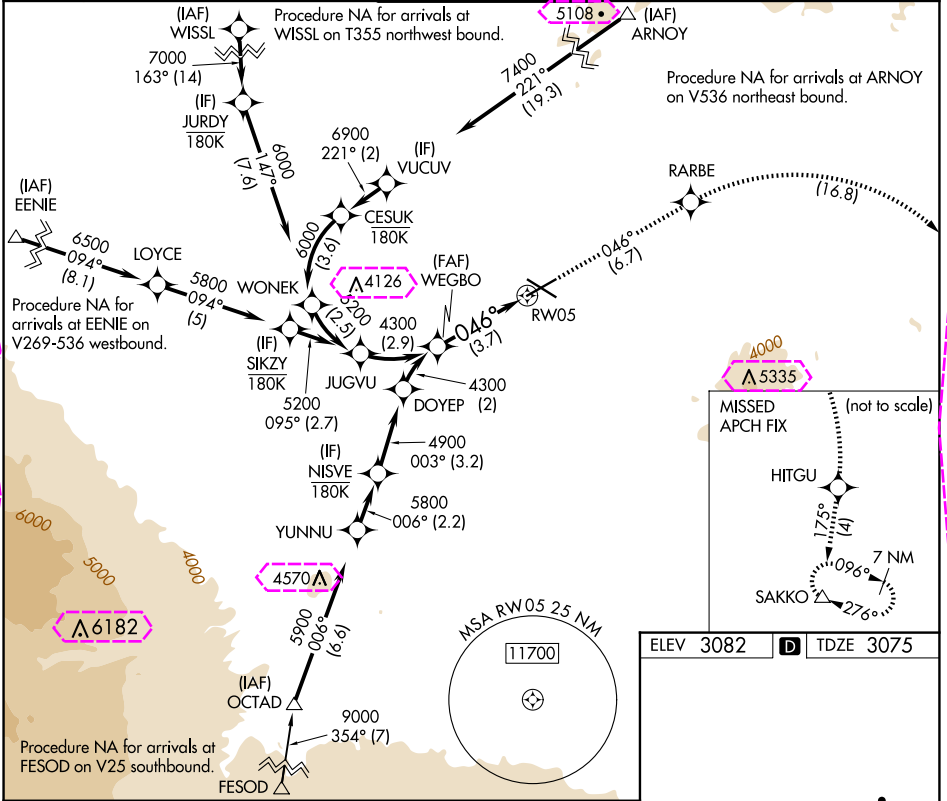
ROBERTS FLD (RDM)

RNP AR APCH - GPS, RF. Authorization required. From ARNOY, EENIE, WISSL: min RNP 0.70.

MISSED APPROACH: Climb to 9500 on track 046° to RARBE right turn to HITGU and on track 175° to SAKKO and hold, continue climb-in-hold to 9500.

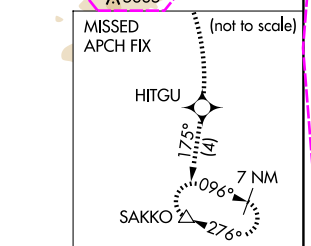
For uncompensated Baro-VNAV systems, procedure NA below -16°C or above 54°C.

ATIS 119.025	SEATTLE CENTER 126.15 269.475	REDMOND TOWER★ 124.5 (CTAF) 256.8	GND CON 121.8	UNICOM 122.95
-----------------	----------------------------------	--------------------------------------	------------------	------------------

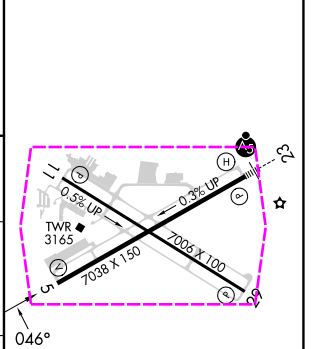


CATEGORY	A	B	C	D
RNP 0.10 DA		3368-7/8	293 (300-7/8)	
RNP 0.30 DA		3574-1 5/8	499 (500-1%)	

AUTHORIZATION REQUIRED



ELEV 3082	TDZE 3075
-----------	-----------



REIL Rwy 5, 11, and 29
HIRL Rwy 5-23
MIRL Rwy 11-29

REDMOND, OREGON
Amdt 2B 12JUN25

44°15'N-121°09'W

ROBERTS FLD (RDM)
RNAV (RNP) Z RWY 5

NW-1, 10 JUL 2025 to 07 AUG 2025

NW-1, 10 JUL 2025 to 07 AUG 2025

REDMOND, OREGON

AL-345 (FAA)

25219

APP CRS	Rwy Ldg	7038
046°	TDZE	3075
	Apt Elev	3082

RNAV (RNP) Z RWY 5

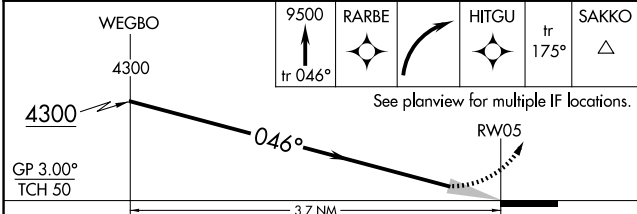
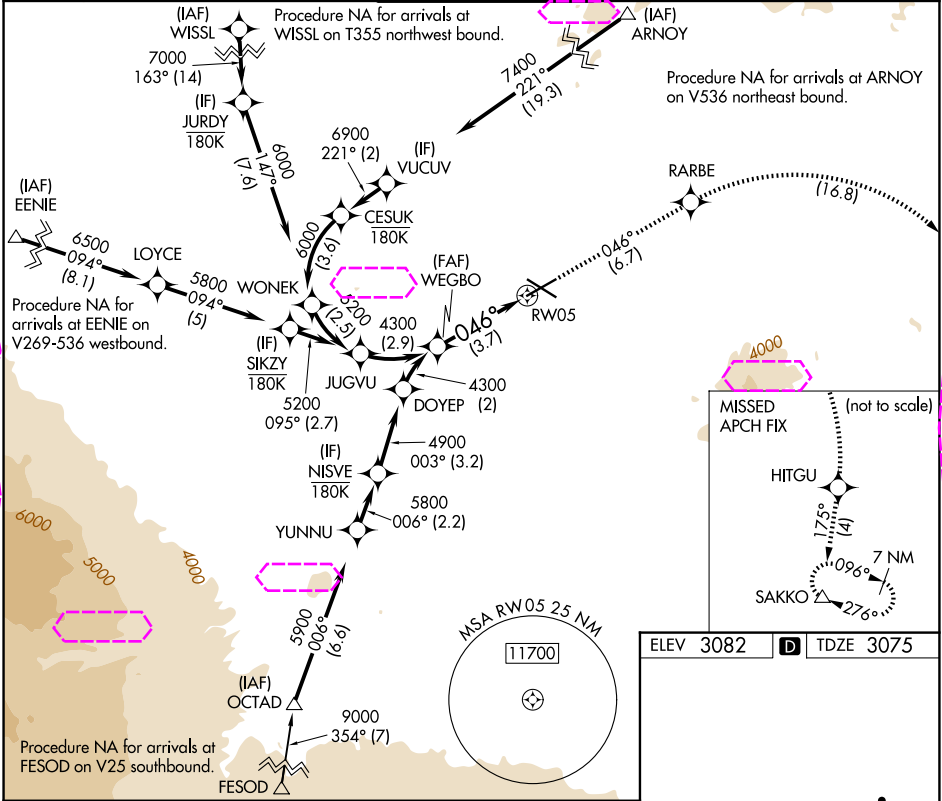
ROBERTS FLD (RDM)

RNP AR APCH - GPS, RF. Authorization required. From ARNOY, EENIE, WISSL: min RNP 0.70.

MISSED APPROACH: Climb to 9500 on track 046° to RARBE right turn to HITGU and on track 175° to SAKKO and hold, continue climb-in-hold to 9500.

For uncompensated Baro-VNAV systems, procedure NA below -16°C or above 54°C.

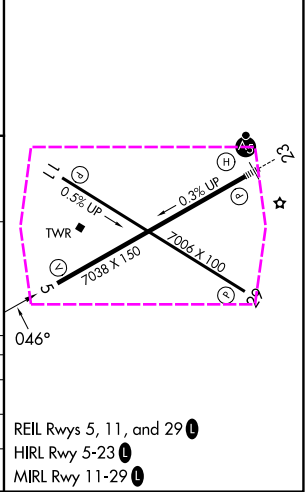
ATIS 119.025	SEATTLE CENTER 126.15 269.475	REDMOND TOWER★ 124.5 (CTAF) 256.8	GND CON 121.8	UNICOM 122.95
-----------------	----------------------------------	--------------------------------------	------------------	------------------



CATEGORY	A	B	C	D
RNP 0.10 DA		3368-7/8	293 (300-7/8)	
RNP 0.30 DA		3574-1 5/8	499 (500-1%)	

AUTHORIZATION REQUIRED

ELEV 3082	TDZE 3075
-----------	-----------



REDMOND, OREGON
Amdt 2B 12JUN25

44°15'N-121°09'W

ROBERTS FLD (RDM)
RNAV (RNP) Z RWY 5

NW-1, 07 AUG 2025 to 04 SEP 2025

NW-1, 07 AUG 2025 to 04 SEP 2025